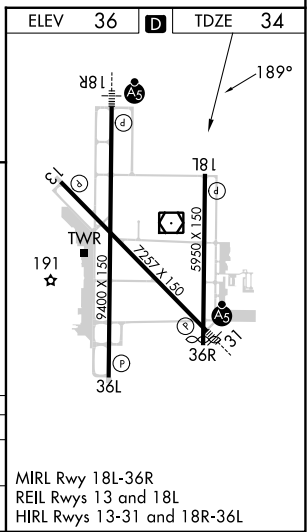
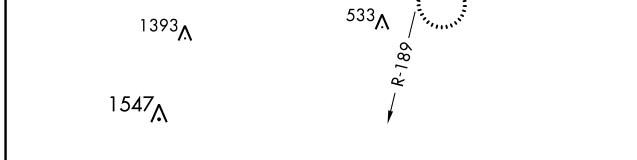
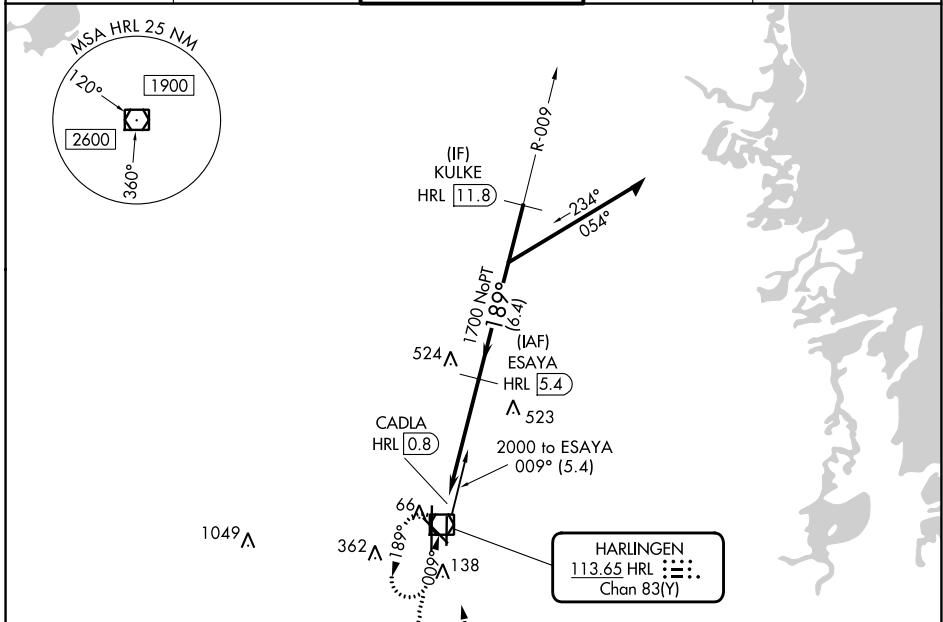


VOR/DME HRL	APP CRS	Rwy Idg <b>5949</b>
<b>113.65</b>	<b>189°</b>	TDZE <b>36</b>
Chan <b>83 (Y)</b>		Apt Elev <b>36</b>

# VOR RWY 18L

VALLEY INTL (HRL)

DME required. RADAR required for procedure entry at KULKE.		MISSED APPROACH: Climb to 2100 then left turn direct HRL VOR/DME and hold.	
ATIS <b>124.85</b>	VALLEY APP CON <b>120.7 279.5</b>	HARLINGEN TOWER ★ <b>119.3 (CTAF) 0 317.6</b>	GND CON <b>121.7</b>
		UNICOM <b>122.95</b>	



CATEGORY	A	B	C	D
S-18L	480-1	446 (500-1)	480-1 $\frac{3}{8}$	446 (500-1 $\frac{3}{8}$ )
CIRCLING	480-1 444 (500-1)	560-1 524 (600-1)	600-1 $\frac{1}{2}$ 564 (600-1 $\frac{1}{2}$ )	680-2 644 (700-2)

MIRL Rwy 18L-36R  
REIL Rwys 13 and 18L  
HIRL Rwys 13-31 and 18R-36L

SC-3, 11 JUL 2024 to 08 AUG 2024

SC-3, 11 JUL 2024 to 08 AUG 2024