

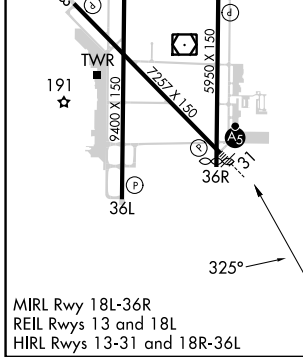
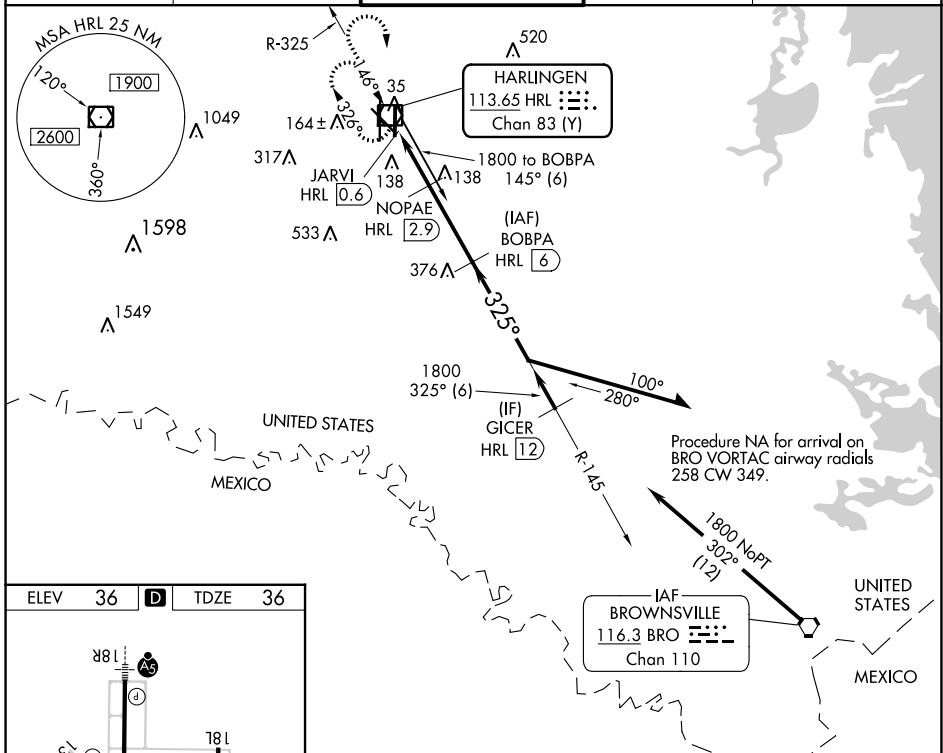
VOR/DME HRL 113.65 Chan 83 (Y)	APP CRS 325°	Rwy Idg TDZE Apt Elev	7257 36 36
--	------------------------	-----------------------------	---------------------------------------

VOR Z RWY 31

VALLEY INTL (HRL)

DME required.	MALSR	MISSED APPROACH: Climb to 1000 then climbing right turn to 2100 direct HRL VOR/DME and hold, continue climb and hold to 2100.
<p>⚠ VDP NA when using Port Isabel altimeter setting. When local altimeter setting not received, use Port Isabel altimeter setting and increase all MDAs 60 feet and S-31 visibility Cat C/D ¼ SM, and Circling visibility Cat C/D ¼ SM. For inop ALS, increase S-31 Cats C/D visibilities to 1½ SM.</p>		

ATIS 124.85	VALLEY APP CON 120.7 279.5	HARLINGEN TOWER * 119.3 (CTAF) 317.6	GND CON 121.7	UNICOM 122.95
-----------------------	--------------------------------------	--	-------------------------	-------------------------



1000 2100 HRL BOBPA HRL 6 Remain within 10 NM	JARVI HRL 0.6 NOPAE HRL 2.9 HRL 1.7	1800 145° 325° 1800 3.00° TCH 55			
		1 NM — 1.2 NM — 3.1 NM			
C CIRCLING	CATEGORY S-31	A 420-½ 424 (500-1)	B 384 (400-½) 560-1 524 (600-1)	C 420-¾ 564 (600-½)	D 384 (400-¾) 680-2 644 (700-2)

SC-3, 11 JUL 2024 to 08 AUG 2024

SC-3, 11 JUL 2024 to 08 AUG 2024