

23222

AIRPORT DIAGRAM

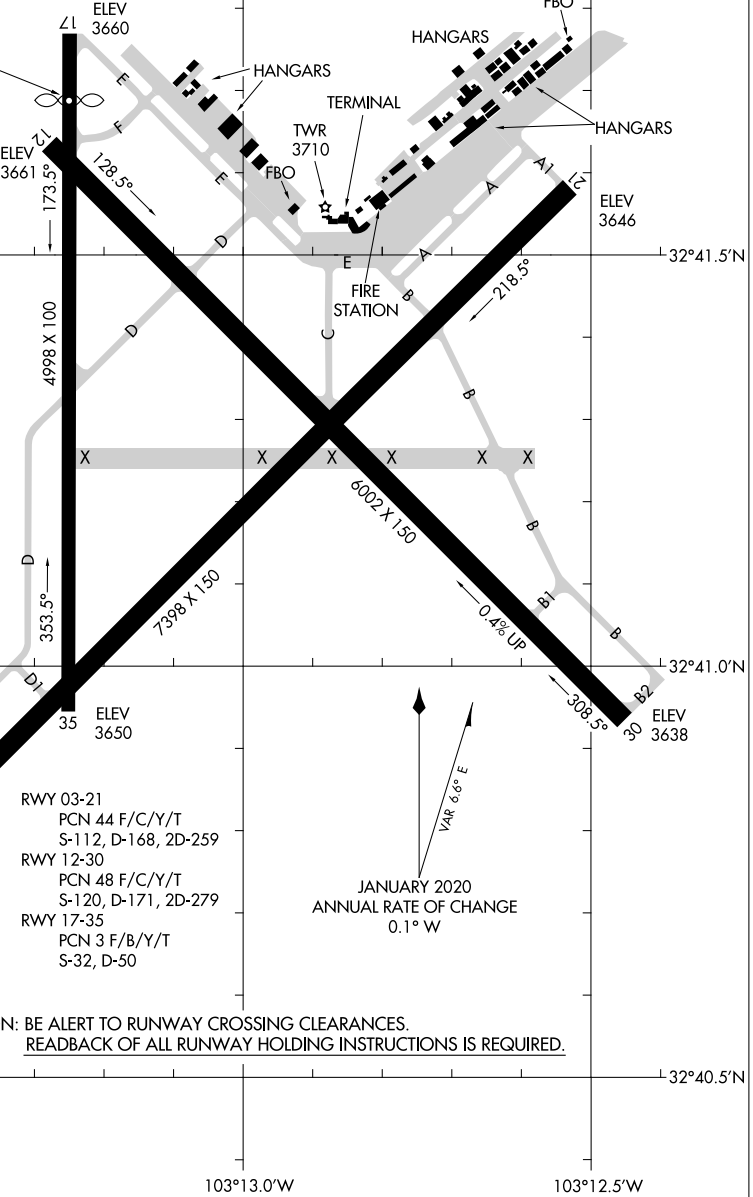
AL-851 (FAA)

LEA COUNTY RGNL (HOB)
HOBBS, NEW MEXICO

ATIS
119.75
HOBBS TOWER*
120.65 317.4
GND CON
121.9

D

FIELD
ELEV
3661



RWY 03-21
PCN 44 F/C/Y/T
S-112, D-168, 2D-259

RWY 12-30
PCN 48 F/C/Y/T
S-120, D-171, 2D-279

RWY 17-35
PCN 3 F/B/Y/T
S-32, D-50

CAUTION: BE ALERT TO RUNWAY CROSSING CLEARANCES.
READBACK OF ALL RUNWAY HOLDING INSTRUCTIONS IS REQUIRED.

SW-1, 11 JUL 2024 to 08 AUG 2024

SW-1, 11 JUL 2024 to 08 AUG 2024

AIRPORT DIAGRAM

23222

HOBBS, NEW MEXICO
LEA COUNTY RGNL (HOB)