

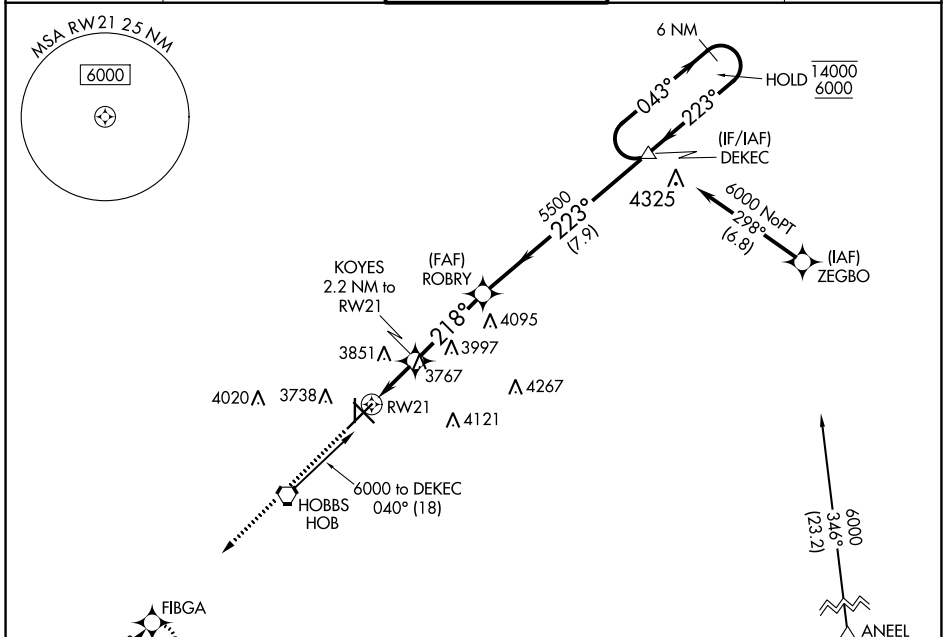
WAAS CH 82735 W21A	APP CRS 218°	Rwy Idg TDZE Apt Elev	7398 3649 3661
--	------------------------	-----------------------------	---

RNAV (GPS) RWY 21

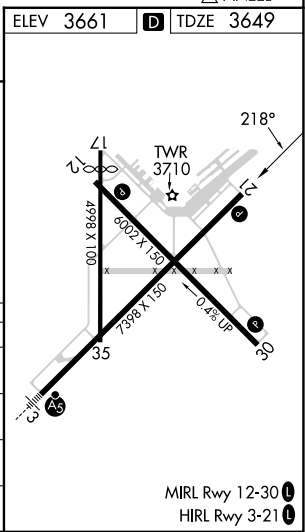
LEA COUNTY RGNL (HOB)

RNP APCH - GPS.	MISSED APPROACH: Climb to 5600 direct FIBGA and hold.
-----------------	---

ATIS 119.75	FORT WORTH CENTER 133.1 298.95	HOBBS TOWER ★ 120.65 (CTAF) 317.4	GND CON 121.9	UNICOM 122.95
-----------------------	--	---	-------------------------	-------------------------



ELEV 5600	FIBGA	ROBYR	DEKEC	6 NM Holding Pattern
↑	✧	KOYES 2.2 NM to RWY21	5500	043° → 14000 ← 223° 6000
1 NM to RWY21	1 NM	1.2 NM	3.5 NM	7.9 NM
218°	218°	223°	223°	043°
4400	5500	5500	5500	14000
GP 3.00°				TCH 44
CATEGORY	A	B	C	D
LPV DA		3899-3/4	250 (300-3/4)	
LNAV/VNAV DA		3899-3/4	250 (300-3/4)	
LNAV MDA		4020-1	371 (400-1)	
CIRCLING	4120-1 459 (500-1)	4160-1 499 (500-1)	4440-2 1/4 779 (800-2 1/4)	4440-2 1/2 779 (800-2 1/2)



SW-1, 11 JUL 2024 to 08 AUG 2024

SW-1, 11 JUL 2024 to 08 AUG 2024