

| | | | |
|--|------------------------|-----------------------------|---|
| WAAS CH 69635 W30A | APP CRS 308° | Rwy Idg TDZE Apt Elev | 6002 3649 3661 |
|--|------------------------|-----------------------------|---|

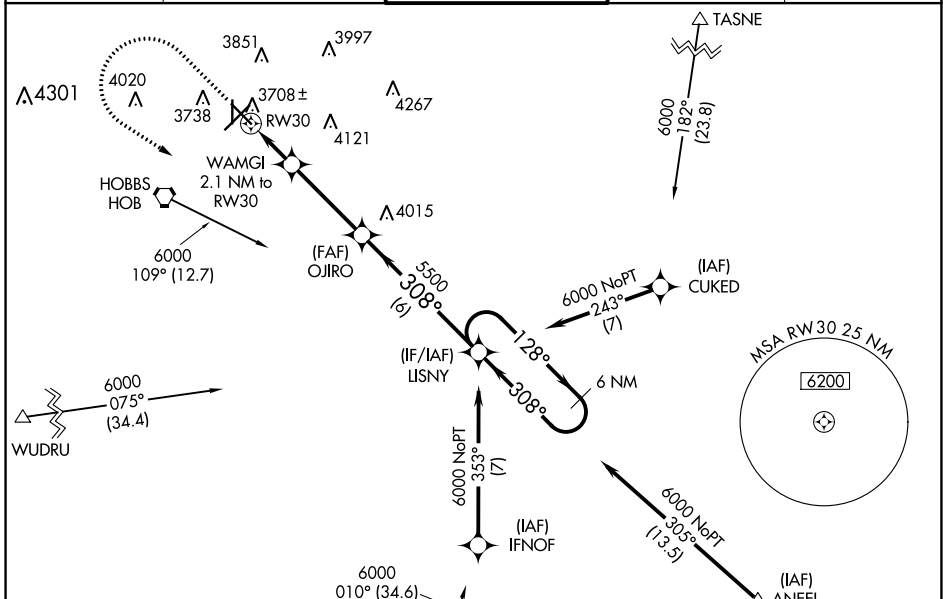
RNAV (GPS) RWY 30

LEA COUNTY RGNL (HOB)

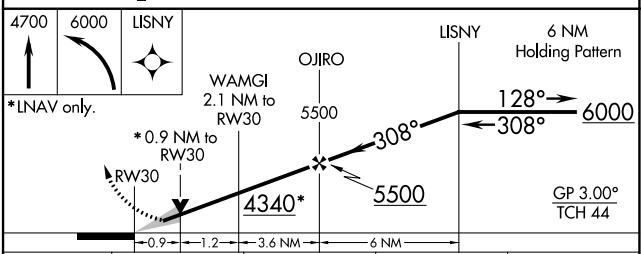
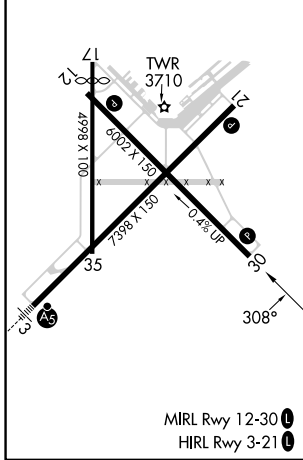
⚠ For uncompensated Baro-VNAV systems, LNAV/VNAV NA below -22°C (-7°F) or above 53°C (128°F).
⚠ DME/DME RNP-0.3 NA. When local altimeter setting not received, use Carlsbad altimeter setting and increase all DA 281 feet and all MDA 300 feet, increase LPV and LNAV/VNAV all Cts visibility 1½ mile, LNAV Cts C/D and Circling Cat C visibility ¾ mile, and Circling Cat D visibility ½ mile. Baro-VNAV and VDP NA when using Carlsbad altimeter setting. Rwy 17 helicopter visibility reduction below 1 SM NA. Circling Rwy 17 NA at night.

MISSED APPROACH: Climb to 4700 then climbing left turn to 6000 direct LISNY and hold.

| | | | | |
|-----------------------|--|---|-------------------------|-------------------------|
| ATIS 119.75 | FORT WORTH CENTER 133.1 298.95 | HOBBS TOWER * 120.65 (CTAF) 0 317.4 | GND CON 121.9 | UNICOM 122.95 |
|-----------------------|--|---|-------------------------|-------------------------|



| | | |
|-----------|----------|-----------|
| ELEV 3661 | D | TDZE 3649 |
|-----------|----------|-----------|



| CATEGORY | A | B | C | D |
|-----------------|-----------------------|-----------------------|-------------------------|-------------------------|
| LPV DA | | 3899-¾ | 250 (300-¾) | |
| LNAV/VNAV DA | | 3899-¾ | 250 (300-¾) | |
| LNAV MDA | | 3960-1 | 311 (300-1) | |
| CIRCLING | 4120-1 459 (500-1) | 4160-1 499 (500-1) | 4440-2¼ 779 (800-2¼) | 4440-2½ 779 (800-2½) |

SW-1, 11 JUL 2024 to 08 AUG 2024

SW-1, 11 JUL 2024 to 08 AUG 2024