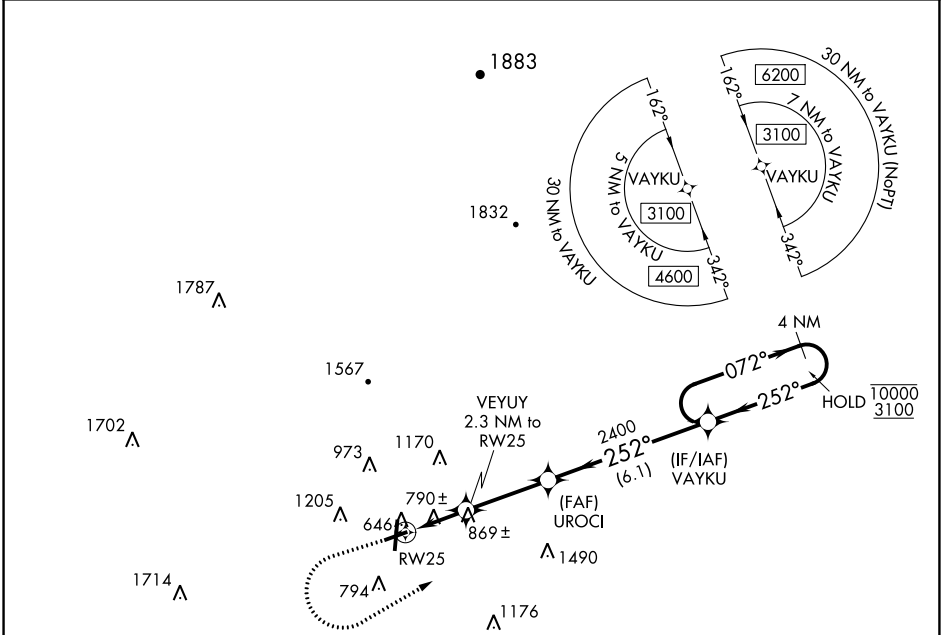


WAAS CH 56542 W25A	APP CRS 252°	Rwy Idg TDZE Apt Elev	4495 638 644
--	------------------------	-----------------------------	---

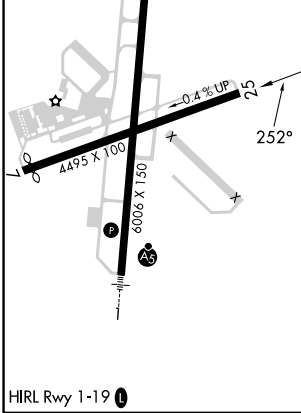
RNAV (GPS) RWY 25

RICHARD B RUSSELL RGNL - J H TOWERS FLD (RMG)

RNP APCH - GPS.		MISSED APPROACH: Climb to 1100 then climbing left turn to 3100 direct VAYKU and hold.	
<p>▽ Rwy 25 helicopter visibility reduction below 3/4 SM NA. ▲ Straight-in minimums NA at night. Circling NA northwest of Rwy 7 and 19.</p>			
ASOS 119.925	ATLANTA CENTER 124.5 270.325	GCO 121.725	UNICOM 122.725 (CTAF)



ELEV 644	D	TDZE 638
-----------------	----------	-----------------



1100	3100	VAYKU	4 NM Holding Pattern	
VAYKU 2.3 NM to RW25 UROCI 2400 RW25 1400		VAYKU 252° → 10000 ← 252° 3100		
RW25 1.2 NM to UROCI UROCI 3.00° TCH 45 UROCI 2400		RW25 1.2 NM to VAYKU VAYKU 3.1 NM to UROCI UROCI 6.1 NM to HOLD		
CATEGORY	A	B	C	D
LP MDA	1040-1	402 (400-1)	1040-1½	402 (400-1½)
LNAV MDA	1120-1	482 (500-1)	1120-1¾	482 (500-1¾)
C CIRCLING	1140-1 496 (500-1)	1200-1 556 (600-1)	1480-2½ 836 (900-2½)	1840-3 1196 (1200-3)

SE-4, 11 JUL 2024 to 08 AUG 2024

SE-4, 11 JUL 2024 to 08 AUG 2024