

LOC I-UIN 110.1	APP CRS 218°	Rwy Idg TDZE Apt Elev	7098 747 769
---------------------------	------------------------	-----------------------------	---

LOC BC RWY 22

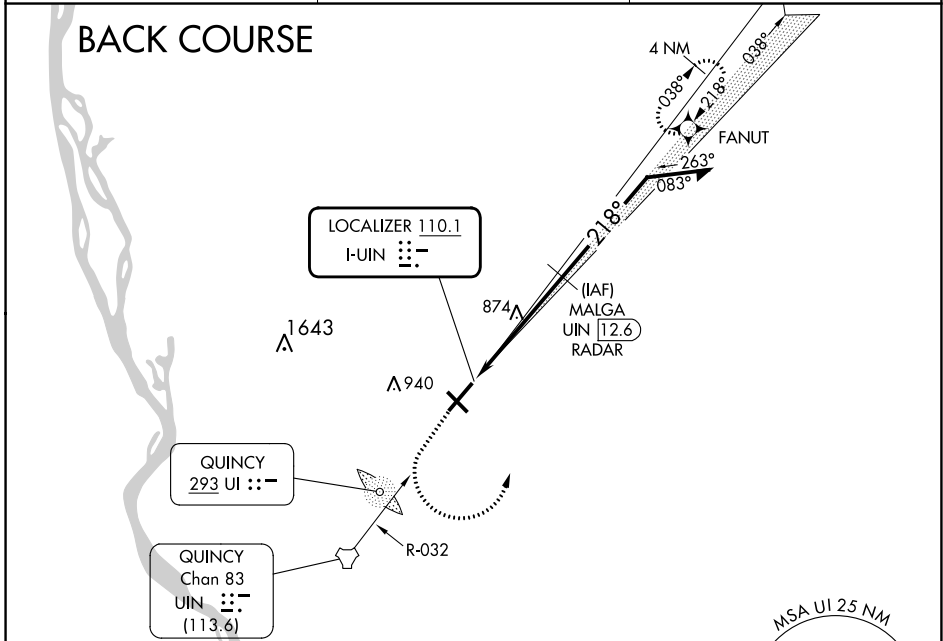
QUINCY RGNL-BALDWIN FLD (UIN)

RNP APCH - GPS
RADAR required for procedure entry at MALGA.

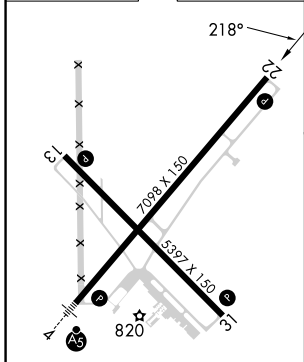
Simultaneous reception of I-UIN and UIN DME required.

MISSED APPROACH: Climb to 1200 then climbing left turn to 2400 direct FANUT and hold.

ASOS 121.425	KANSAS CITY CENTER 126.225 317.775	UNICOM 123.0 (CTAF)
------------------------	--	-------------------------------



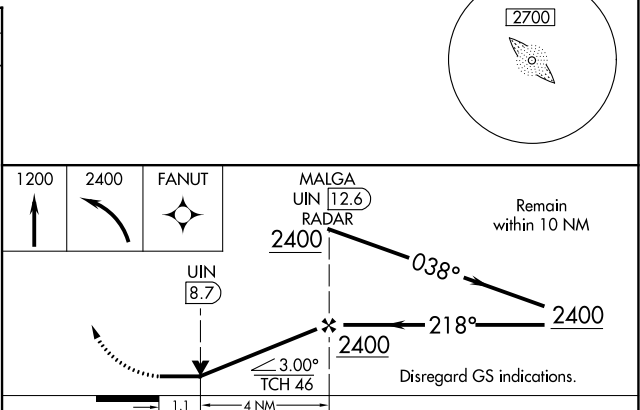
ELEV 769	D	TDZE 747
----------	----------	----------



HIRL Rwy 4-22 **L**
MIRL Rwy 13-31 **L**
REIL Rwy 22 **L**

FAF to MAP 5.1 NM

Knots	60	90	120	150	180
Min:Sec	5:06	3:24	2:33	2:02	1:42



CATEGORY	A	B	C	D
S-22	1140-1	393 (400-1)	1140-1½	393 (400-1½)
CIRCLING	1180-1 411 (500-1)	1220-1 451 (500-1)	1240-1½ 471 (500-1½)	1320-2 551 (600-2)