

WAAS CH 90330 W13A	APP CRS 127°	Rwy Idg 5200 TDZE 1196 Apt Elev 1201
--	------------------------	---

RNAV (GPS) RWY 13

WAUSAU DOWNTOWN (A U W)

RNP APCH.

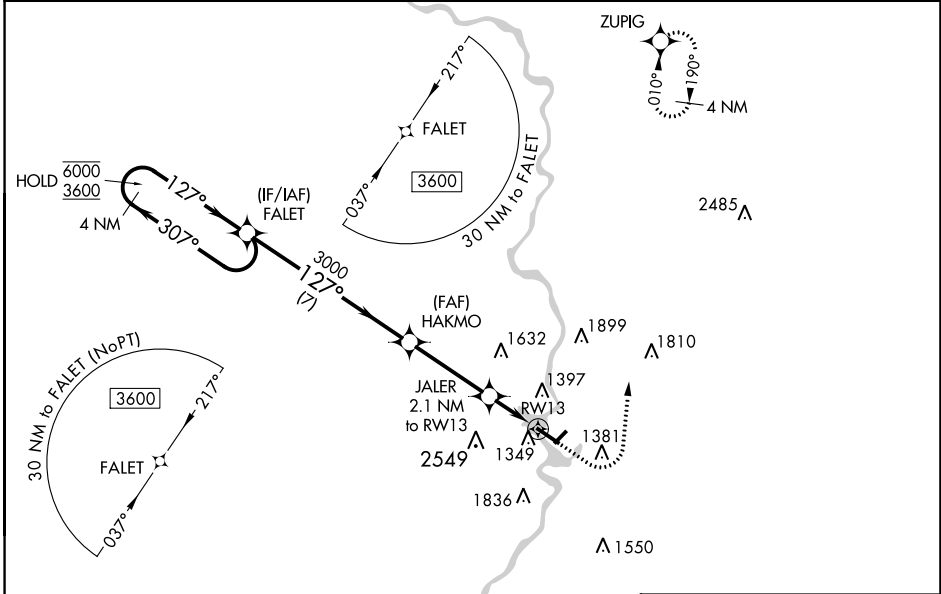
▼ Circling NA to Rwsy 12W and 30W.
▲ Circling NA southwest of Rwy 13-31.
 For uncompensated Baro-VNAV systems, LNAV/VNAV NA below -17°C or above 54°C.

MISSED APPROACH: Climb to 1800 then climbing left turn to 4000 direct ZUPIG and hold.

ASOS **125.925**

MINNEAPOLIS CENTER **124.4 317.7**

UNICOM **122.7 (CTAF) 0**



EC-3, 11 JUL 2024 to 08 AUG 2024

EC-3, 11 JUL 2024 to 08 AUG 2024

4 NM Holding Pattern		FALET	HAKMO	JALER	RWY 13
6000 ← 307°		3600 → 127°	3000	2.1 NM to RWY 13	1.1 NM to RWY 13
GP 3.00° TCH 43		3000	*1900	*LNAV only.	
		7 NM	3.4 NM	1 NM	1.1 NM
CATEGORY	A	B	C	D	
LPV DA		1446-3/4	250 (300-3/4)		
LNAV/VNAV DA		1534-1 1/8	338 (400-1 1/8)		
LNAV MDA	1600-1	404 (400-1)	1600-1 1/8	404 (400-1 1/8)	
C CIRCLING	1840-1	639 (700-1)	1960-2 1/4	2260-3	
			759 (800-2 1/4)	1059 (1100-3)	

