

WAAS CH 53302 W04A	APP CRS 042°	Rwy Idg 5997 TDZE 3374 Apt Elev 3374
--	------------------------	---

RNAV (GPS) RWY 4

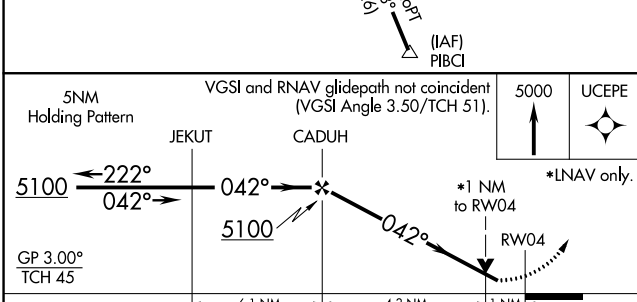
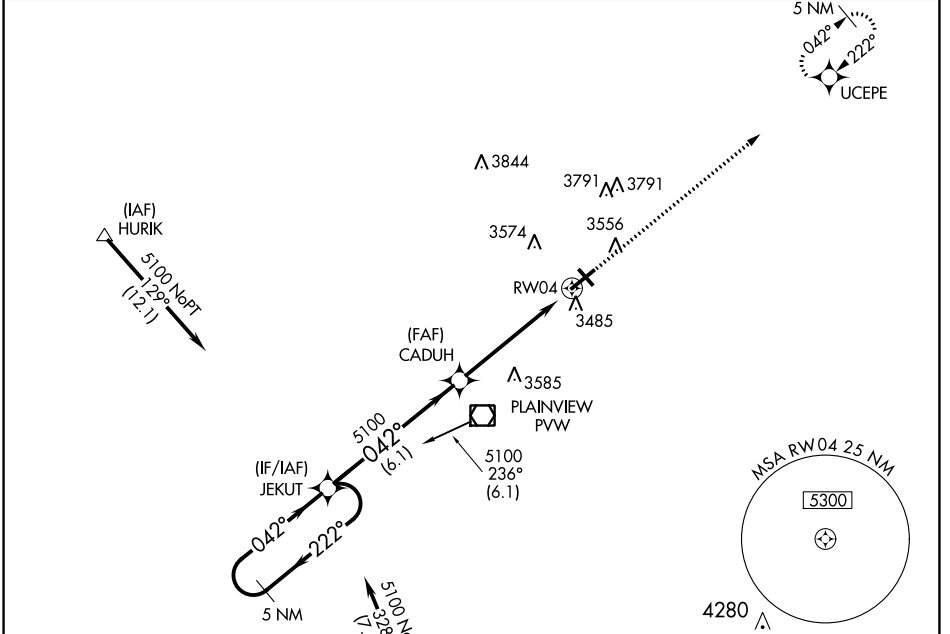
HALE COUNTY (PVW)

RNP APCH.

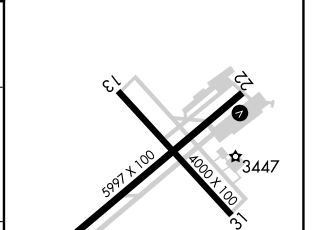
▼ For uncompensated Baro-VNAV systems, LNAV/VNAV NA below -21°C or above 42°C. VDP and Baro-VNAV NA when using Lubbock altimeter setting. Rwy 4 helicopter visibility reduction below 3/4 SM NA. When local altimeter setting not received, use Lubbock altimeter setting; increase all DA 83 feet and increase all LPV and LNAV/VNAV visibility 1/2 SM, increase all MDA 100 feet and LNAV Cat C/D visibility 1/4 SM and Circling Cat C/D visibility 1/2 SM.

MISSED APPROACH: Climb to 5000, direct UCEPE and hold.

AWOS-3 119.675	LUBBOCK APP CON 119.2 351.8	CLNC DEL 118.4	UNICOM 123.0 (CTAF) 0
--------------------------	---------------------------------------	--------------------------	---------------------------------



ELEV 3374	TDZE 3374
-----------	-----------



CATEGORY	A	B	C	D
LPV DA	3624-1		250 (300-1)	
LNAV/VNAV DA	3730-1 1/4		356 (400-1 1/4)	
LNAV MDA	3800-1 426 (500-1)		3800-1 1/4 426 (500-1 1/4)	
CIRCLING	3940-1 1/4 566 (600-1 1/4)		4160-2 1/4 786 (800-2 1/4) 4160-2 1/2 786 (800-2 1/2)	

REIL Rwy 4 0
REIL Rwy 22
MIRL Rwy 4-22 and 13-31 0

SC-2, 11 JUL 2024 to 08 AUG 2024

SC-2, 11 JUL 2024 to 08 AUG 2024