

VOR/DME PVW 112.9 Chan 76	APP CRS 024°	Rwy Idg 5997 TDZE 3374 Apt Elev 3374
---	------------------------	---

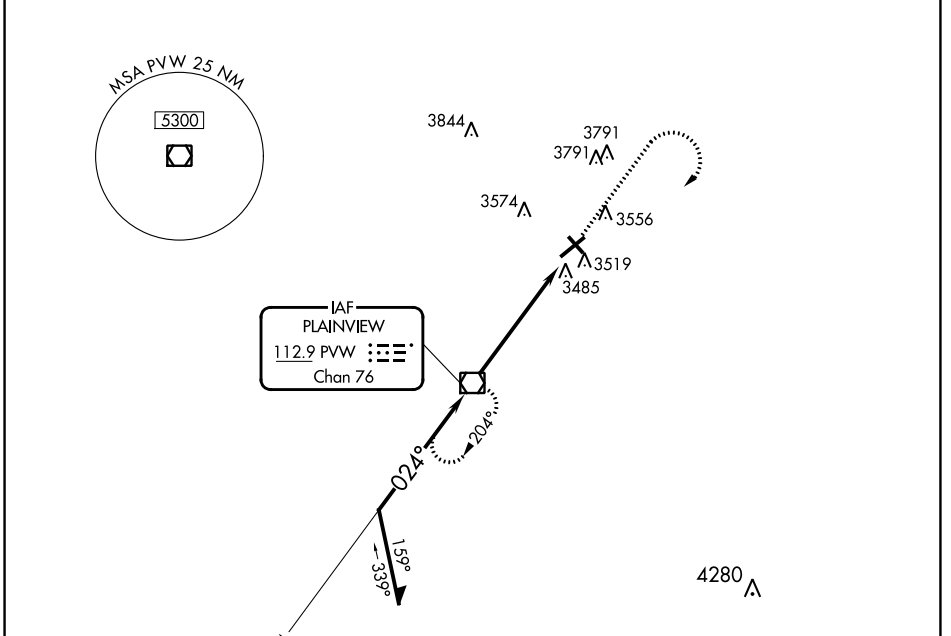
VOR RWY 4

HALE COUNTY (PVW)

NA When local altimeter setting not received, use Lubbock altimeter setting and increase all MDA 100 feet, increase S-4 visibility Cat C/D to 1 $\frac{1}{8}$ SM, Circling Cat C visibility to 2 $\frac{3}{4}$ SM, and Circling Cat D visibility to 3 SM. Helicopter visibility reduction below $\frac{3}{4}$ mile NA.

MISSED APPROACH: Climb to 4500, then climbing right turn to 5200 direct PVW VOR/DME and hold.

AWOS-3 119.675	LUBBOCK APP CON 119.2 351.8	CLNC DEL 118.4	UNICOM 123.0 (CTAF)
--------------------------	---------------------------------------	--------------------------	-------------------------------



VGSI and descent angles not coincident (VGSI Angle 3.50/TCH 51).

4500 5200 PVW

Remain within 10 NM

PVW VOR/DME

204°

024°

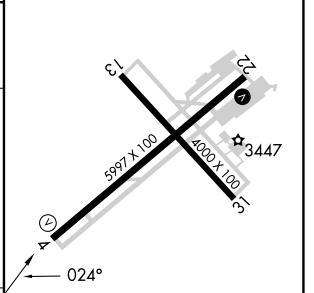
5200

5200

2.98° TCH 62

5.6 NM

ELEV 3374	TDZE 3374
REIL Rwy 4	
REIL Rwy 22	
MIRL Rwys 4-22 and 13-31	



CATEGORY	A	B	C	D
S-4	3840-1	466 (500-1)	3840-1 $\frac{3}{8}$	466 (500-1 $\frac{3}{8}$)
CIRCLING	3940-1	566 (600-1)	4160-2 $\frac{1}{4}$ 786 (800-2 $\frac{1}{4}$)	4160-2 $\frac{1}{2}$ 786 (800-2 $\frac{1}{2}$)

FAF to MAP 5.6 NM					
Knots	60	90	120	150	180
Min:Sec	5:36	3:44	2:48	2:14	1:52

SC-2, 11 JUL 2024 to 08 AUG 2024

SC-2, 11 JUL 2024 to 08 AUG 2024