

RNAV (GPS) RWY 33

CHAUTAUGUA COUNTY/DUNKIRK (DKK)

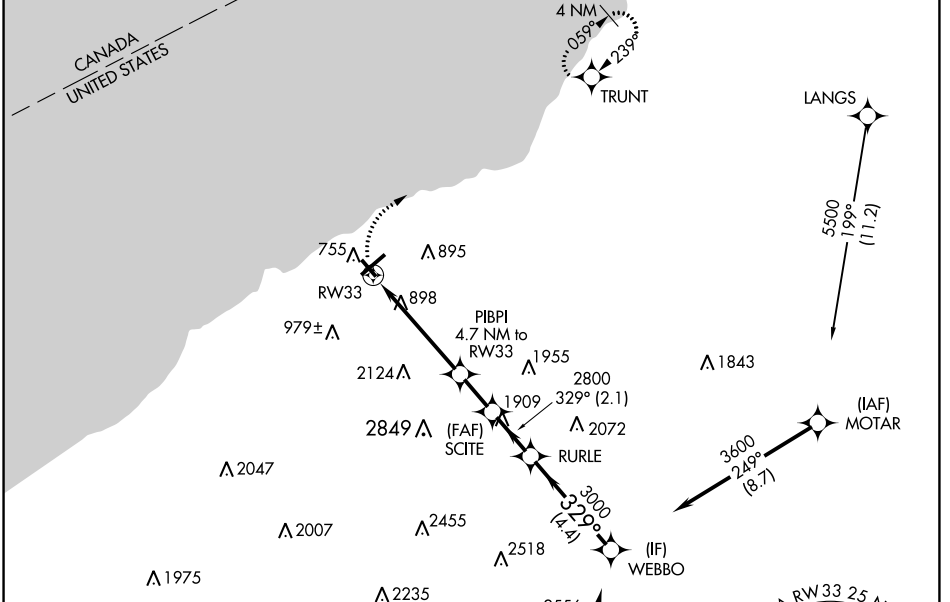
APP CRS	Rwy Idg	4000
329°	TDZE	692
	Apt Elev	692

RNP APCH.

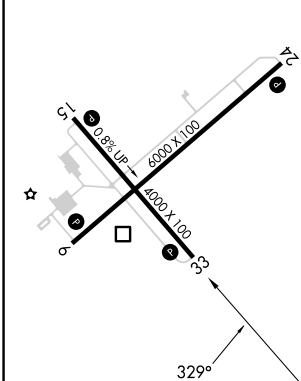
⚠ Circling Cat D NA southeast of Rwy 6 and southwest of Rwy 33.
 Rwy 33 helicopter visibility reduction below 1 SM NA.
❄ -22°C
 Straight-In Rwy 33 NA at night, Circling Rwy 6, 24, 33 NA at night.

MISSED APPROACH: Climbing right turn to 3200 direct TRUNT and hold.

ASOS 119.275	BUFFALO APP CON 126.5 317.6	UNICOM 123.075 (CTAF) 0
------------------------	---------------------------------------	--



ELEV	692	TDZE	692
------	-----	------	-----



MIRL Rwy 15-33 **0**
 REIL Rws 6 and 24 **0**
 HIRL Rwy 6-24 **0**

Procedure NA for arrival on JHW VOR/DME airway radials 346 CW 103.

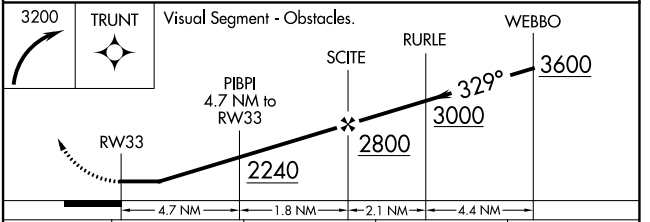
(IAF) JAMESTOWN JHW
 2556 Δ
 3600 023° (8.4)

(IF) WEBBO
 3000 329° (4.4)
 3000 329° (4.4)

(IAF) MOTAR
 3600 249° (18.7)

LANGS
 5500 199° (11.2)

MSA RWY 33 25 NM
 3900



CATEGORY	A	B	C	D
LNAV MDA	1860-1¼ 1168 (1200-1¼)	1860-1½ 1168 (1200-1½)	1860-3	1168 (1200-3)
C CIRCLING	1860-1¼ 1168 (1200-1¼)	1860-1½ 1168 (1200-1½)	1860-3 1168 (1200-3)	2140-3 1448 (1500-3)

RNAV (GPS) RWY 33

NE-2, 11 JUL 2024 to 08 AUG 2024

NE-2, 11 JUL 2024 to 08 AUG 2024