

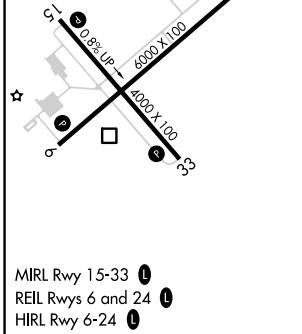
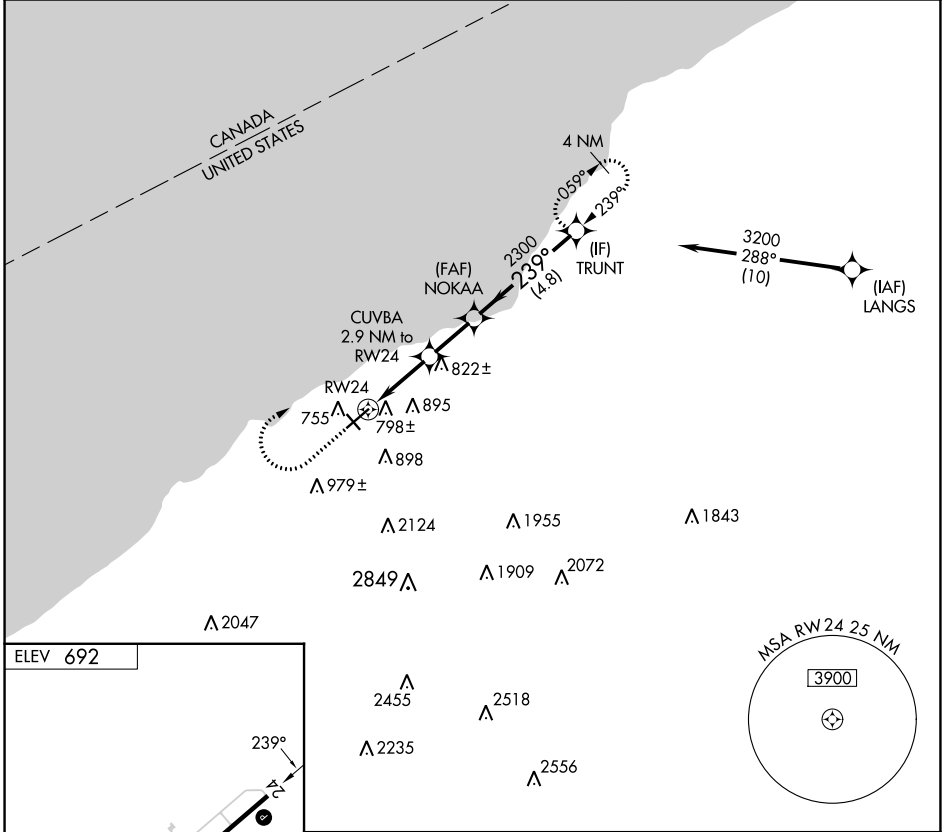
APP CRS <b>239°</b>	Rwy Idg TDZE Apt Elev	<b>N/A</b> <b>N/A</b> <b>692</b>
------------------------	-----------------------------	--

# RNAV (GPS)-A

CHAUTAUGUA COUNTY/DUNKIRK (DKK)

<p>RNP APCH - GPS.</p> <p><b>∇</b> Circling Cat D NA southeast of Rwy 6 and southwest of Rwy 33.  <b>⚠</b> Circling Rwy 6, 24, 33 NA at night.  <b>✈</b> -22°C Rwy 6, 24, 33 helicopter visibility reduction below 1 SM NA.</p>	<p>MISSED APPROACH: Climb to 1900 then climbing right turn to 3200 direct TRUNT and hold.</p>
---	---

<p>ASOS <b>119.275</b></p>	<p>BUFFALO APP CON <b>126.5 317.6</b></p>	<p>UNICOM <b>123.075 (CTAF) 0</b></p>
--------------------------------	---	---



MIRL Rwy 15-33 **0**  
 REIL Rws 6 and 24 **0**  
 HIRL Rwy 6-24 **0**

	1900	3200	TRUNT	Visual Segment - Obstacles.
CATEGORY	A	B	C	D
<b>C</b> CIRCLING	1200-1 508 (600-1)	1320-1 628 (700-1)	1640-2¾ 948 (1000-2¾)	2140-3 1448 (1500-3)

NE-2, 11 JUL 2024 to 08 AUG 2024

NE-2, 11 JUL 2024 to 08 AUG 2024