

(WATTR8.WATTR) 24025


AL-886 (FAA)

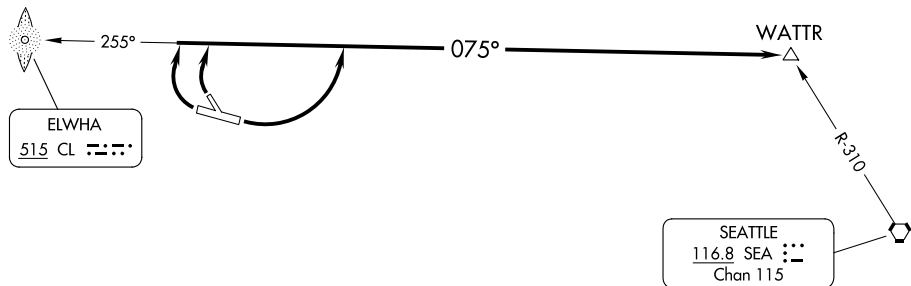
WILLIAM R FAIRCHILD INTL (CLM)
PORT ANGELES, WASHINGTON

WATTR EIGHT DEPARTURE (OBSTACLE)

ADF required.

WHIDBEY DEP CON
118.2 285.65
CTAF
122.975

VICTORIA
113.7 YYJ 
Chan 84



NW-1, 11 JUL 2024 to 08 AUG 2024

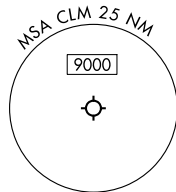
NW-1, 11 JUL 2024 to 08 AUG 2024

TAKEOFF MINIMUMS

Rwy 13: NA - Obstacles.

Rwys 27, 31: Standard.

Rwy 9: 300-1.



NOTE: Chart not to scale. (CONTINUED ON FOLLOWING PAGE)

DEPARTURE ROUTE DESCRIPTION

TAKEOFF RUNWAY 9: Climbing left turn thence. . . .

TAKEOFF RUNWAYS 27, 31: Climbing right turn thence. . . .

. . . .on 075° bearing from CL LOM to WATTR INT. Maintain 5400.

WATTR EIGHT DEPARTURE (OBSTACLE)

(WATTR8.WATTR) 25JAN24

PORT ANGELES, WASHINGTON
WILLIAM R FAIRCHILD INTL (CLM)

WATTR EIGHT DEPARTURE (OBSTACLE)

TAKEOFF OBSTACLE NOTES

- Rwy 9: Sign 46' from DER, 198' right of centerline, 4' AGL/295' MSL.
 Terrain 54' from DER, 449' right of centerline, 296' MSL.
 Sign 79' from DER, 352' right of centerline, 4' AGL/299' MSL.
 Building, terrain, Navaid beginning 99' from DER, 1' right of centerline, up to 17' AGL/314' MSL.
 Fence 102' from DER, 526' left of centerline, 7' AGL/299' MSL.
 Fence 270' from DER, 526' left of centerline, 7' AGL/300' MSL.
 Building 298' from DER, 258' left of centerline, 20' AGL/311' MSL.
 Tree, pole beginning 575' from DER, 69' left of centerline, up to 377' MSL.
 Pole, vehicle on traverse way beginning 677' from DER, 630' right of centerline, up to 32' AGL/338' MSL.
 Transmission line 922' from DER, 630' right of centerline, 51' AGL/355' MSL.
 Tree, transmission line, pole beginning 927' from DER, 136' right of centerline, up to 385' MSL.
 Trees beginning 1107' from DER, 391' right of centerline, up to 420' MSL.
 Trees beginning 1312' from DER, 169' right of centerline, up to 464' MSL.
 Tree 1412' from DER, 695' left of centerline, 396' MSL.
 Tree 1454' from DER, 811' left of centerline, 424' MSL.
 Trees beginning 1523' from DER, 191' right of centerline, up to 466' MSL.
 Tree 1613' from DER, 790' left of centerline, 439' MSL.
 Trees beginning 1740' from DER, 35' right of centerline, up to 469' MSL.
 Trees beginning 1826' from DER, 166' left of centerline, up to 454' MSL.
 Trees beginning 2421' from DER, 670' left of centerline, up to 455' MSL.
 Trees beginning 2922' from DER, 9' left of centerline, up to 457' MSL.
 Trees beginning 3272' from DER, 406' right of centerline, up to 473' MSL.
 Trees beginning 3375' from DER, 105' right of centerline, up to 481' MSL.
 Tree, pole beginning 3453' from DER, 105' right of centerline, up to 490' MSL.
 Trees beginning 3601' from DER, 28' left of centerline, up to 460' MSL.
 Trees beginning 3746' from DER, 32' left of centerline, up to 461' MSL.
 Trees beginning 4375' from DER, 622' right of centerline, up to 498' MSL.
 Trees beginning 4460' from DER, 137' right of centerline, up to 502' MSL.
 Trees beginning 4985' from DER, 717' right of centerline, up to 465' MSL.
- Rwy 27: Lighting 10' from DER, 54' right of centerline, 3' AGL/287' MSL.
 Lighting 10' from DER, 55' left of centerline, 3' AGL/286' MSL.
 Trees beginning 2709' from DER, 130' left of centerline, up to 406' MSL.
 Trees beginning 3951' from DER, 530' right of centerline, up to 393' MSL.
 Trees beginning 4446' from DER, 1173' left of centerline, up to 421' MSL.
- Rwy 31: Tree, pole beginning 1' from DER, 222' right of centerline, up to 315' MSL.
 Trees beginning 8' from DER, 4' left of centerline, up to 321' MSL.
 Tree 338' from DER, 524' right of centerline, 316' MSL.
 Trees beginning 431' from DER, 121' right of centerline, up to 320' MSL.
 Trees beginning 505' from DER, 39' left of centerline, up to 324' MSL.
 Trees beginning 638' from DER, 8' right of centerline, up to 323' MSL.

NW-1, 11 JUL 2024 to 08 AUG 2024