

VORTAC HQM <b>117.7</b> Chan <b>124</b>	APP CRS <b>062°</b>	Rwy Idg TDZE Apt Elev	<b>5000</b> <b>18</b> <b>18</b>
---	------------------------	-----------------------------	---------------------------------------

# VOR RWY 6

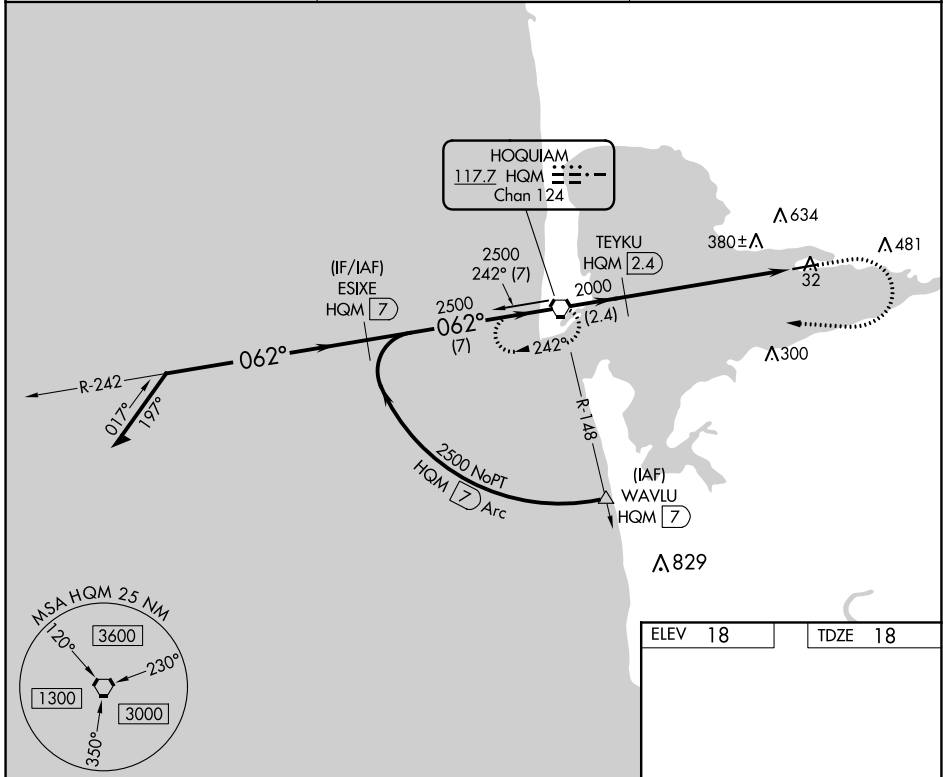
BOWERMAN (HQM)

DME required.

**⚠** Circling NA northwest of Rwy 6-24. Rwy 6 helicopter visibility reduction below 1 SM NA. Straight-in Rwy 6 NA at night, Circling Rwy 6 NA at night.

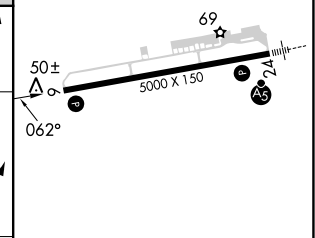
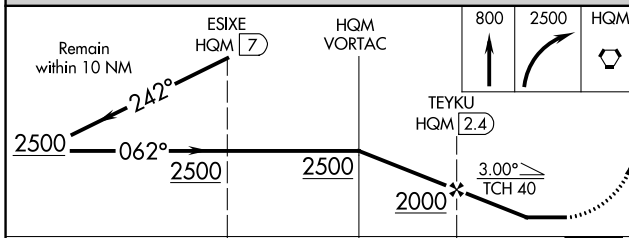
MISSED APPROACH: Climb to 800 then climbing right turn 2500 direct HQM VORTAC and hold, continue climb-in-hold to 2500.

ASOS <b>135.775</b>	SEATTLE CENTER <b>128.3 269.0</b>	UNICOM <b>122.7 (CTAF) 0</b>
------------------------	--------------------------------------	---------------------------------



NW-1, 11 JUL 2024 to 08 AUG 2024

NW-1, 11 JUL 2024 to 08 AUG 2024



ELEV 18	TDZE 18					
REIL Rwy 6 0						
HIRL Rwy 6-24 0						
FAF to MAP 6.1 NM						
CATEGORY	A	B	C	D		
S-6	640-1	622 (700-1)	640-1¾	622 (700-1¾)		
CIRCLING	640-1	622 (700-1)	800-2¼	840-2¾		
			782 (800-2¼)	822 (900-2¾)		
	Knots	60	90	120	150	180
	Min:Sec	6:06	4:04	3:03	2:26	2:02