

COPTER TACAN RWY 32

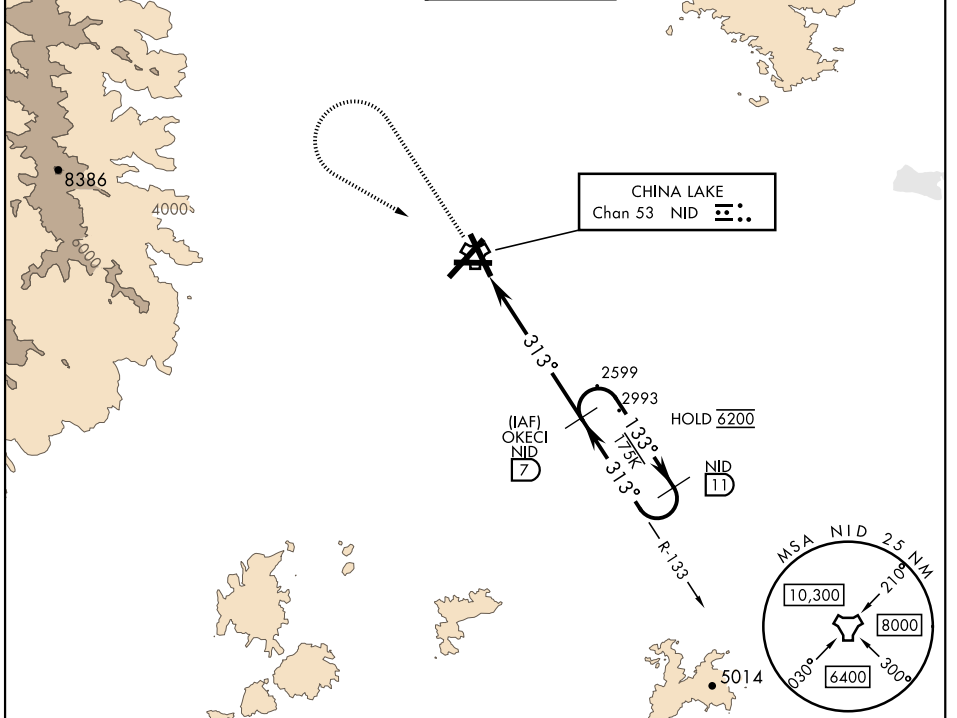
TACAN NID Chan 53	APCH CRS 313°	Rwy Ldg THRE 2241 Arpt Elev 2284	9013 2241 2284
----------------------	------------------	----------------------------------------	----------------------

(USN) CHINA LAKE NAWS (ARMITAGE FLD) (KNID)

RADAR required
 ▼ Limit final approach airspeed to 80 KIAS.

MISSED APPROACH: Climb to 3600, then climbing left turn to 6200, intercept NID TACAN R-133 to OKECI and hold. Continue climb in hold.

ATIS ★ 322.375	JOSHUA APP CON/DEP CON 133.65 348.7	TOWER ★ 120.15 340.2	GND CON 350.3	CLNC DEL 254.25
-------------------	----------------------------------------	-------------------------	------------------	--------------------

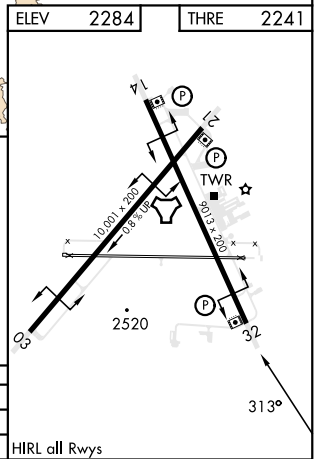
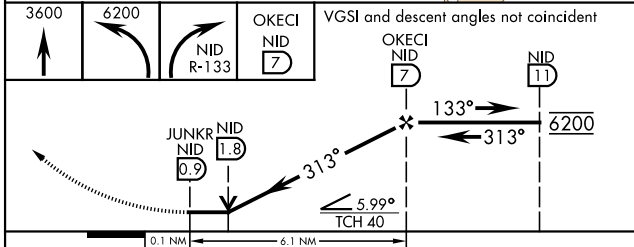


SW-3, 11 JUL 2024 to 08 AUG 2024

SW-3, 11 JUL 2024 to 08 AUG 2024

ELEV	2284	THRE	2241
------	------	------	------

EMERG SAFE ALT 100 NM 16,500



CATEGORY	COPTER		
S-32	2860-1	619	(600-1)
CIRCLING	2860-1	576	(600-1)

HIRL all Rwys

RIDGECREST, CALIFORNIA 35° 41'N - 117° 42'W CHINA LAKE NAWS (ARMITAGE FLD) (KNID)

COPTER TACAN RWY 32