

RIDGECREST, CALIFORNIA

RNAV (GPS) RWY 03

APCH CRS	Rwy Idg	10,001
028°	TDZE	2284
	Arpt Elev	2284

- (USN)

CHINA LAKE NAWS (ARMITAGE FLD) (KNID)

RNP APCH
RADAR required

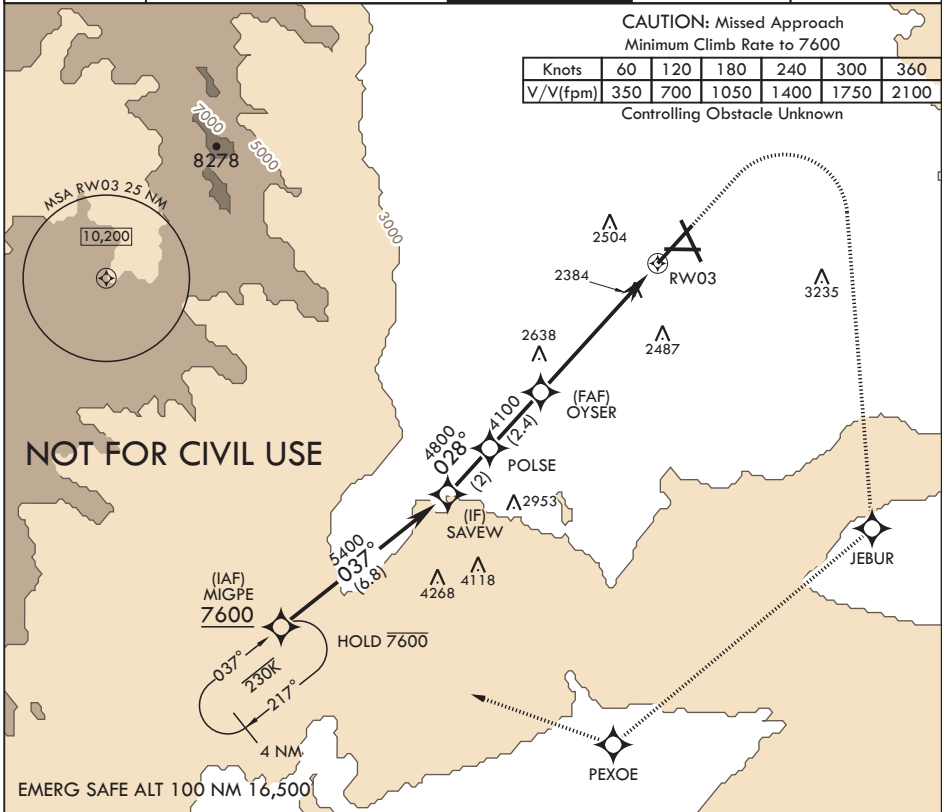
MISSED APPROACH: (Do not exceed 185 KIAS until initial turn completion.) Climb to 3600 then climbing right turn to 7600 direct JEBUR, track 216° to PEXOE, track 275° to MIGPE and hold. Missed Approach requires a minimum climb of 350 ft per NM to 7600.

ATIS* 322.375	JOSHUA APP CON/DEP CON 133.65 348.7	TOWER* 120.15 340.2	GND CON 350.3	CLNC DEL 254.25
------------------	--	------------------------	------------------	--------------------

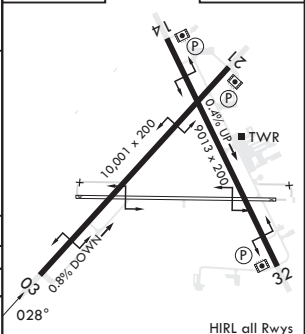
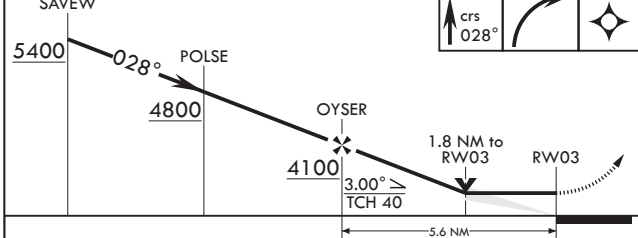
CAUTION: Missed Approach
Minimum Climb Rate to 7600

Knots	60	120	180	240	300	360
V/V(fpm)	350	700	1050	1400	1750	2100

Controlling Obstacle Unknown



SAVEW	3600	7600	JEBUR	ELEV 2284	TDZE 2284
-------	------	------	-------	-----------	-----------



CATEGORY	A	B	C	D
LNAV MDA	2900-1 616 (700-1)	2900-1¼ 616 (700-1¼)	2900-1¼ 616 (700-1¼)	3560-3 1276 (1300-3)
CIRCLING	2900-1 616 (700-1)			

RIDGECREST, CALIFORNIA

35°41'N - 117°42'W

CHINA LAKE NAWS (ARMITAGE FLD) (KNID)

Orig 12AUG21

RNAV (GPS) RWY 03

SW-3, 11 JUL 2024 to 08 AUG 2024

SW-3, 11 JUL 2024 to 08 AUG 2024