

RIDGECREST, CALIFORNIA

RNAV (GPS) RWY 32

APCH CRS 321°	Rwy Idg TDZE Arprt Elev	9013 2241 2284
------------------	-------------------------------	----------------------

-(USN)

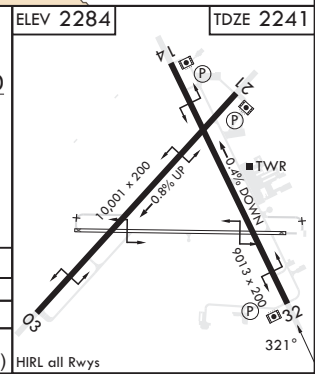
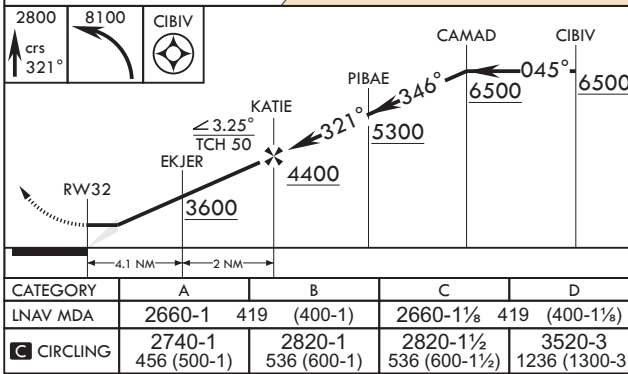
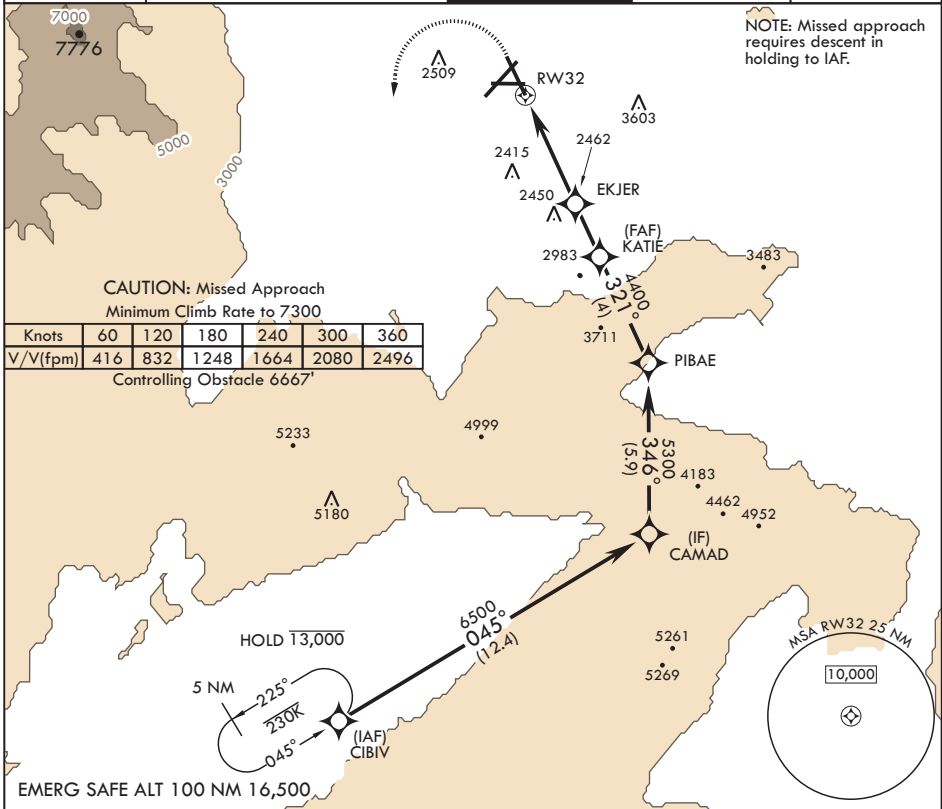
CHINA LAKE NAWS (ARMITAGE FLD) (KNID)

RNP APCH

MISSED APPROACH: Climb to 2800 then climbing left turn to 8100 direct CIBIV and hold, continue climb-in-hold to 8100.

RADAR required

ATIS★ 322.375	JOSHUA APP CON/DEP CON 133.65 348.7	TOWER★ 120.15 340.2	GND CON 350.3	CLNC DEL 254.25
------------------	--	------------------------	------------------	--------------------



RIDGECREST, CALIFORNIA

35°41'N - 117°42'W

CHINA LAKE NAWS (ARMITAGE FLD) (KNID)

Amdt 5 10SEP20

RNAV (GPS) RWY 32

SW-3, 11 JUL 2024 to 08 AUG 2024

SW-3, 11 JUL 2024 to 08 AUG 2024