

# SALTD SEVEN DEPARTURE (SALTD7•SALTD)

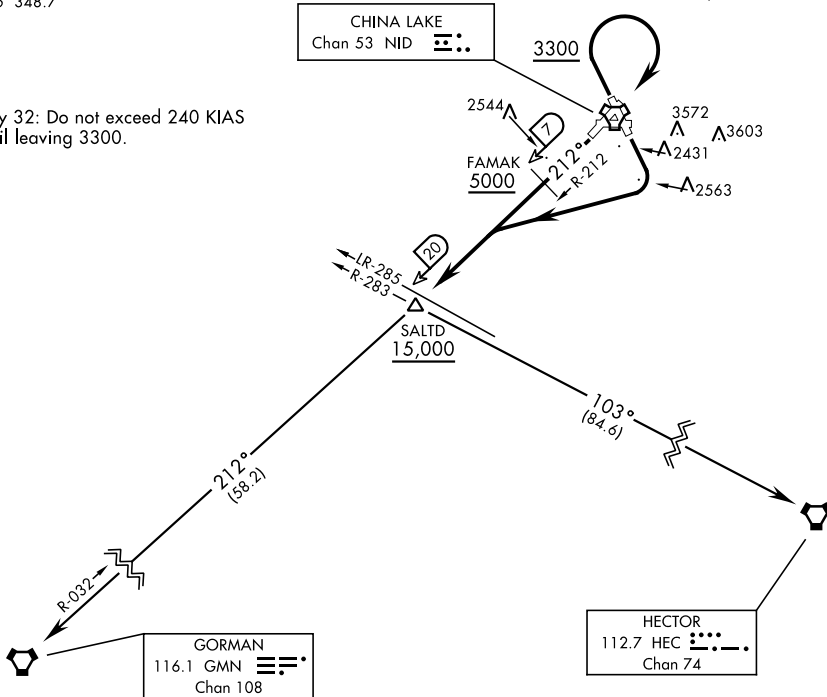
CHINA LAKE NAWs (ARMITAGE FLD) (KNID)  
 [USN] RIDGECREST, CALIFORNIA

ATIS ★ 322.375  
 CLNC DEL 9961  
 254.25  
 GND CON  
 350.3  
 CHINA LAKE TOWER ★  
 120.15 340.2  
 JOSHUA DEP CON  
 133.65 348.7

Rwy	Knots	60	120	180	240	300	360
★14	V/V(fpm)	266	532	798	1064	1330	1596
†14	V/V(fpm)	620	1240	1860	2480	3100	3720
†21	V/V(fpm)	675	1350	2025	2700	3375	4050
†32	V/V(fpm)	496	992	1488	1984	2480	2976

★ Minimum Climb Rate to 6200  
 † ATC Climb Rate to 15,000

Rwy 32: Do not exceed 240 KIAS until leaving 3300.



SW-3, 11 JUL 2024 to 08 AUG 2024

SW-3, 11 JUL 2024 to 08 AUG 2024

## DEPARTURE ROUTE DESCRIPTION

**TAKEOFF RUNWAY 14:** Climbing right turn to intercept NID TACAN R-212, then direct SALTD. From SALTD, proceed via assigned transition or RADAR vectors to join assigned route. Cross SALTD at or above 15,000. Thence...

**TAKEOFF RUNWAY 21:** Climb via NID TACAN R-212 to FAMAK, then direct SALTD. From SALTD, proceed via assigned transition or RADAR vectors to join assigned route. Cross FAMAK at or above 5,000 and cross SALTD at or above 15,000. Thence...

**TAKEOFF RUNWAY 32:** Climb via NID TACAN R-322 to 3300 then climbing right turn direct NID, then via NID TACAN R-212 to FAMAK, then direct SALTD. From SALTD, proceed via assigned transition or RADAR vectors to join assigned route. Cross FAMAK at or above 5000 and cross SALTD at or above 15,000. Thence...

**GORMAN TRANSITION (SALTD7•GMN):** Via GMN VORTAC R-032 to GMN.

**HECTOR TRANSITION (SALTD7•HEC):** Via HEC VORTAC R-283 to HEC.

# SALTD SEVEN DEPARTURE (SALTD7•SALTD)

RIDGECREST, CALIFORNIA  
 CHINA LAKE NAWs (ARMITAGE FLD) (KNID)