

RIDGECREST, CALIFORNIA

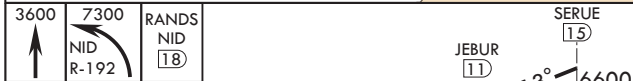
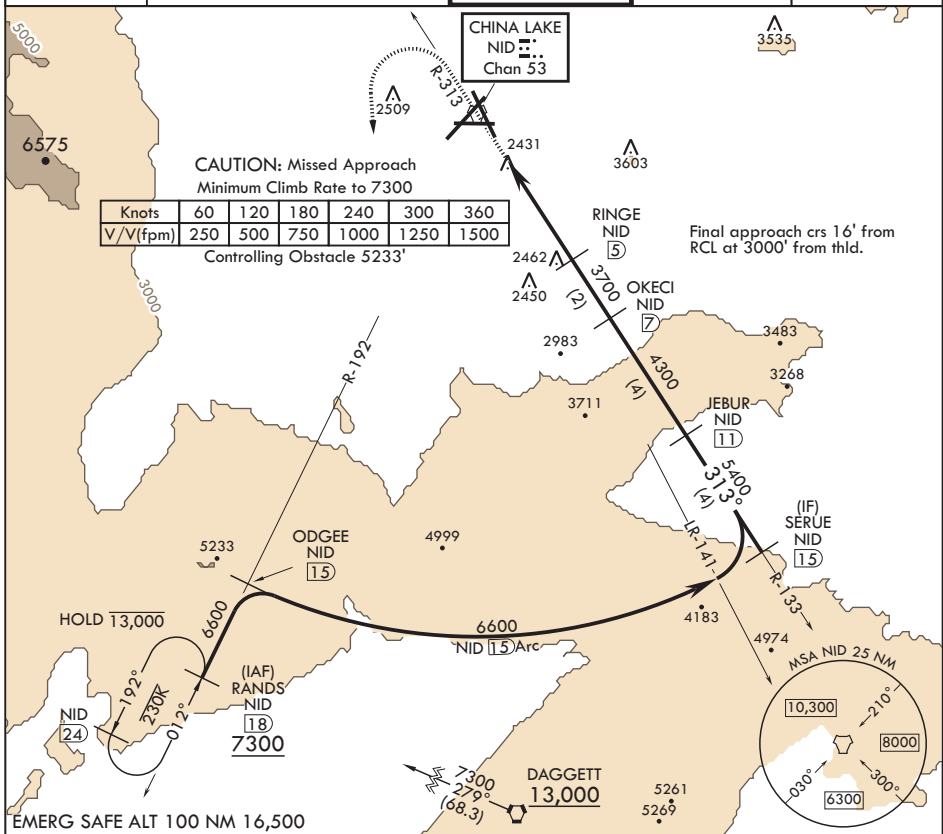
# TACAN RWY 32

TACAN NID Chan 53	APCH CRS 313°	Rwy ldg TDZE Arprt Elev	<b>9013</b> <b>2241</b> <b>2284</b>
----------------------	------------------	----------------------------	---

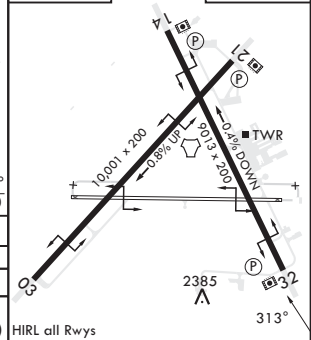
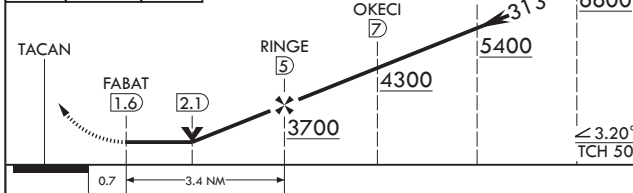
- (USN) CHINA LAKE NAWS (ARMITAGE FLD) (KNID)

**MISSED APPROACH:** Climb to 3600 then a climbing left turn to 7300 to intercept China Lake TACAN R-192 to RANDS and hold.

ATIS★ <b>322.375</b>	JOSHUA APP CON/DEP CON <b>133.65 348.7</b>	TOWER★ <b>120.15 340.2</b>	GND CON <b>350.3</b>	CLNC DEL <b>254.25</b>
-------------------------	---	-------------------------------	-------------------------	---------------------------



ELEV 2284	TDZE 2241
-----------	-----------



CATEGORY	A	B	C	D
S-32	2720-1 479 (500-1)		2720-1½ 479 (500-1½)	
CIRCLING	2740-1 456 (500-1)	2820-1 536 (600-1)	2820-1½ 536 (600-1½)	3500-3 1216 (1300-3)

RIDGECREST, CALIFORNIA 35°41'N - 117°42'W CHINA LAKE NAWS (ARMITAGE FLD) (KNID)

Amdt 5 10SEP20

# TACAN RWY 32

SW-3, 11 JUL 2024 to 08 AUG 2024

SW-3, 11 JUL 2024 to 08 AUG 2024