

# TACAN Y RWY 03

TACAN NID Chan 53	APCH CRS 034°	Rwy Idg 10,001 TDZE 2284 Arprt Elev 2284
----------------------	------------------	--

[USN]

CHINA LAKE NAWS (ARMITAGE FLD) (KNID)

RADAR required

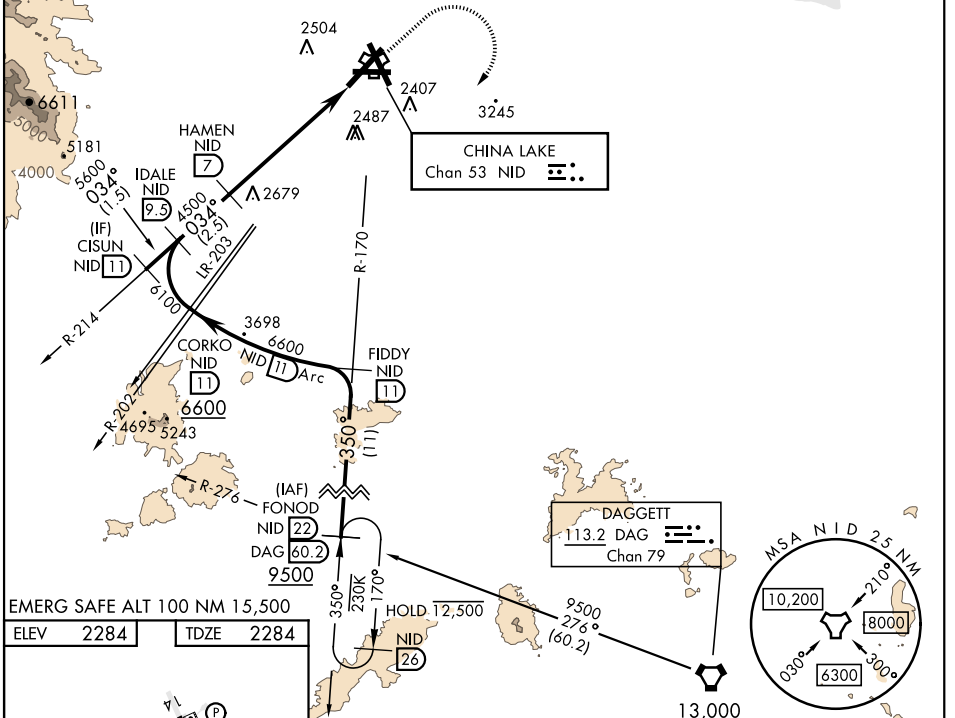
MISSED APPROACH: Climb to 3600 then climbing right turn to 9500 to intercept NID TACAN R-170 to FONOD and hold. Minimum climb gradient 370 to 9500.

ATIS ★ 322.375	JOSHUA APP/DEP CON 133.65 348.7	TOWER ★ 120.15 340.2	GND CON 350.3	CLNC DEL 254.25
-------------------	------------------------------------	-------------------------	------------------	--------------------

Knots	60	120	180	240	300	360
V/V(fpm)	370	740	1110	1480	1850	2220
Min climb of 370 ft/NM to 9500 - Controlling Obstacle Unk						

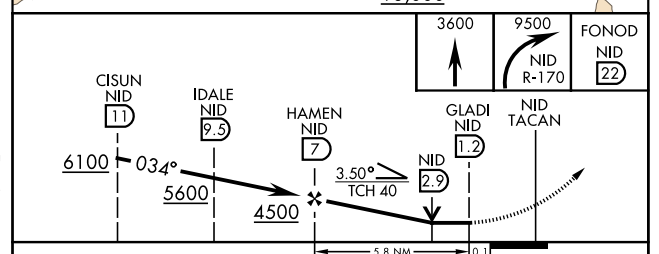
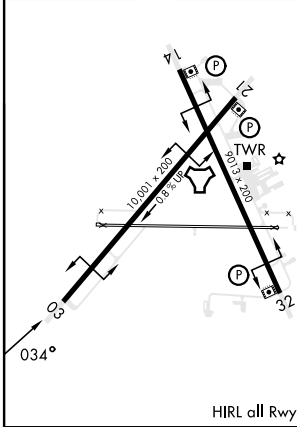
CAUTION: Short Intermediate Segment (4 NM), recommend early configuration.

CAUTION: DG from CISUN to IDALE 333 ft/NM. IDALE to HAMEN 440 ft/NM.



EMERG SAFE ALT 100 NM 15,500

ELEV 2284	TDZE 2284
-----------	-----------



CATEGORY	A	B	C	D
S-03	2980-1	696 (700-1)	2980-2	696 (700-2)
CIRCLING	2980-1	696 (700-1)	2980-2 696 (700-2)	3560-3 1276 (1300-3)

# TACAN Y RWY 03

SW-3, 11 JUL 2024 to 08 AUG 2024

SW-3, 11 JUL 2024 to 08 AUG 2024