

# TACAN RWY 35R

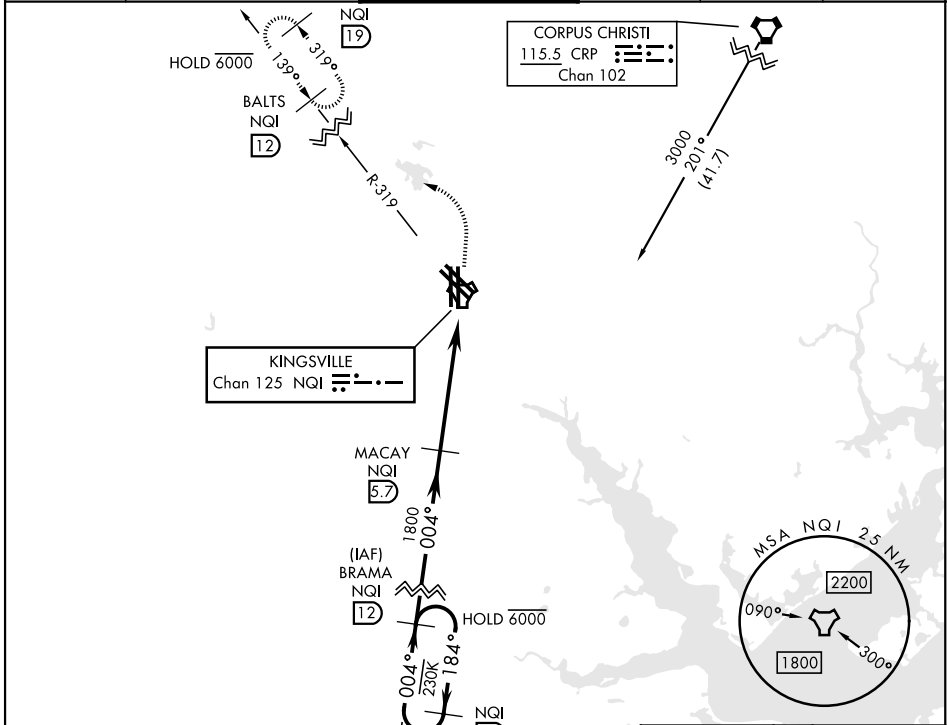
TACAN NQI Chan 125	APCH CRS 004°	Rwy Ldg TDZE 49 Arprt Elev 50
-----------------------	------------------	----------------------------------------

AL-918 [USN]

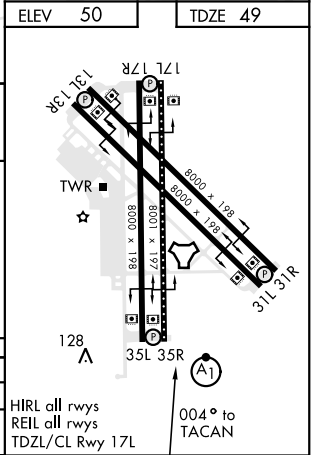
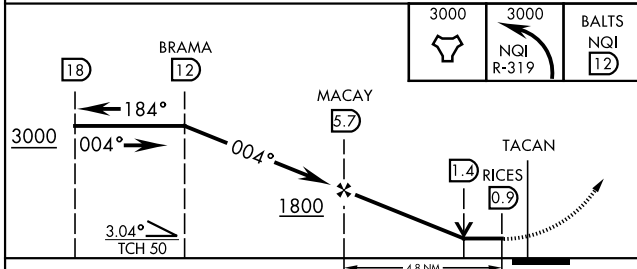
KINGSVILLE NAS (KNQI)

▼ \* When ALS inop, increase vis to 1 mile.
 ALS-F-1
MISSED APPROACH: Climb to 3000 direct NQI TACAN and climbing left turn to intercept NQI R-319 to BALTS and hold. Continue climb-in-hold to 3000.

ATIS ★ 282.25	APP CON 119.9 290.45	TOWER★ 124.1 377.05	GND CON 239.05	CLNC DEL 328.4	ASR/PAR
------------------	-------------------------	------------------------	-------------------	-------------------	---------



ELEV 50	TDZE 49
---------	---------



CATEGORY	A	B	C	D
S-35R *	420-½	372 (400-½)	420-¾	372 (400-¾)
Ⓢ CIRCLING	540-1	490 (500-1)	760-2 710 (800-2)	760-2¼ 710 (800-2¼)

HIRL all rwys  
 REIL all rwys  
 TDZL/CL Rwy 17L  
 004° to TACAN

# TACAN RWY 35R

SC-3, 11 JUL 2024 to 08 AUG 2024

SC-3, 11 JUL 2024 to 08 AUG 2024