

# TACAN Y RWY 17R

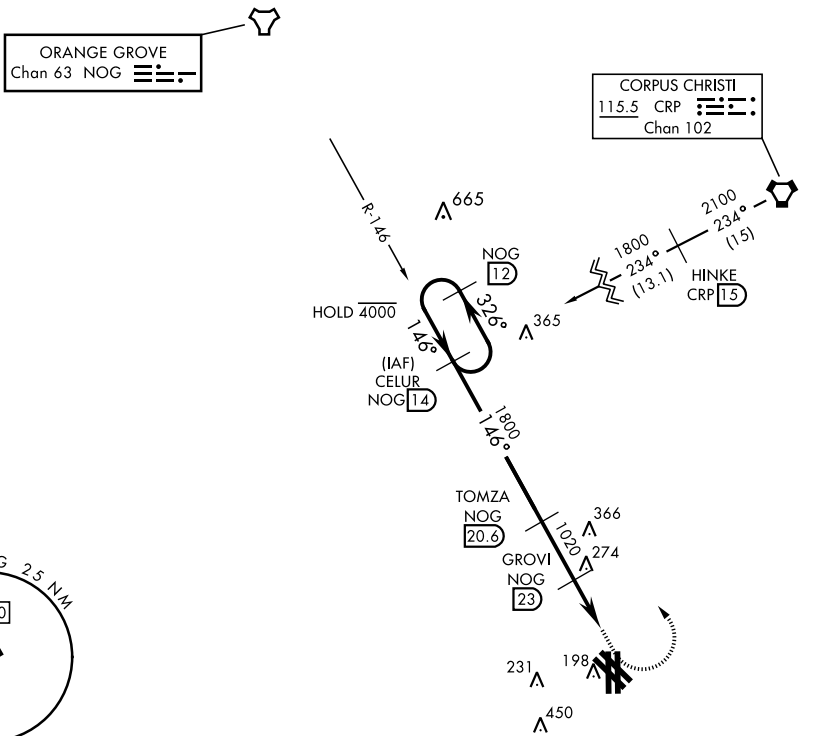
TACAN Chan <b>63</b>	NOG	APCH CRS <b>146°</b>	Rwy Idg TDZE Arprt Elev	<b>8000</b> <b>50</b> <b>50</b>
-------------------------	-----	-------------------------	-------------------------------	---------------------------------------

AL-918 [USN]

KINGSVILLE NAS (KNQI)

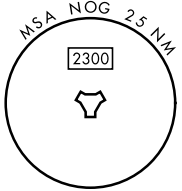
MISSED APPROACH: Climbing left turn to 1800, intercept NOG TACAN R-146 to CELUR and hold.

ATIS ★ <b>282.25</b>	APP CON <b>119.9 290.45</b>	TOWER ★ <b>124.1 377.05</b>	GND CON <b>239.05</b>	CLNC DEL <b>328.4</b>	ASR/PAR
-------------------------	--------------------------------	--------------------------------	--------------------------	--------------------------	---------

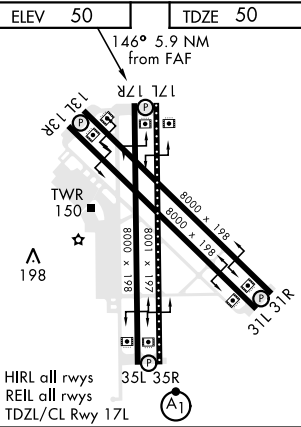
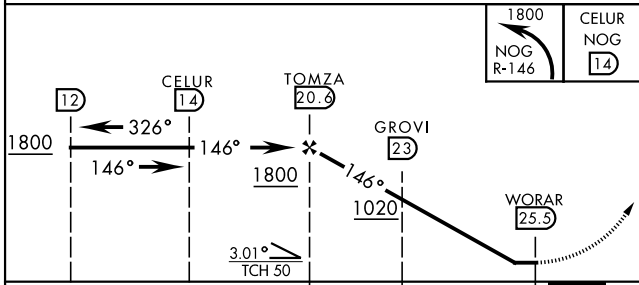


ORANGE GROVE  
Chan 63 NOG

CORPUS CHRISTI  
115.5 CRP   
Chan 102



EMERG SAFE ALT 100 NM 16,200



CATEGORY	A	B	C	D
S-17R	560-1 511 (600-1)	560-1 <sup>3</sup> / <sub>8</sub> 511 (600-1 <sup>3</sup> / <sub>8</sub> )	760-2 710 (800-2)	760-2 <sup>1</sup> / <sub>4</sub> 710 (800-2 <sup>1</sup> / <sub>4</sub> )
CIRCLING	560-1 510 (600-1)			

HIRL all rwys  
REIL all rwys  
TDZL/CL Rwy 17L

# TACAN Y RWY 17R

SC-3, 11 JUL 2024 to 08 AUG 2024

SC-3, 11 JUL 2024 to 08 AUG 2024