

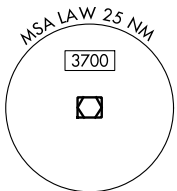
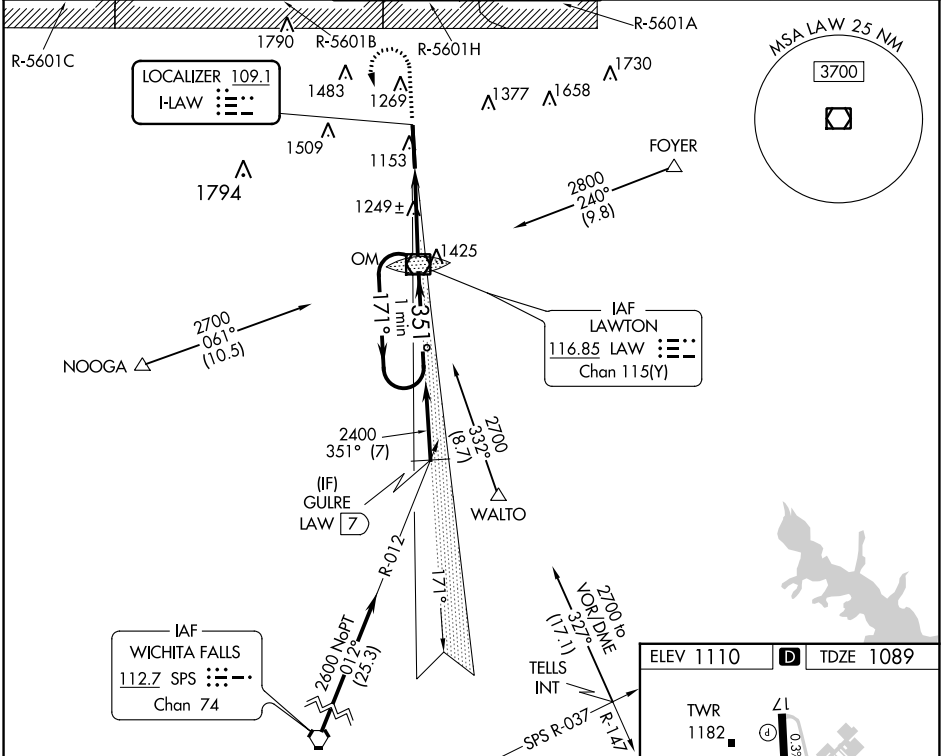
LOC I-LAW 109.1	APP CRS 351°	Rwy Idg TDZE Apt Elev	8599 1089 1110
---------------------------	------------------------	-----------------------------	---

ILS or LOC RWY 35

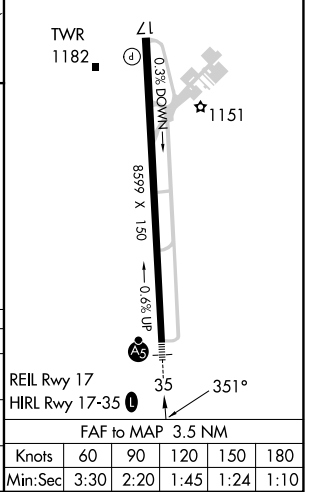
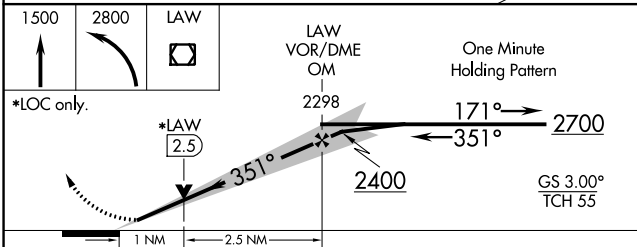
LAWTON-FORT SILL RGNL (LAW)

<p>Autopilot coupled approach NA below 2000. For inop ALS, increase S-LOC 35 Cat C/D visibility to 1½ SM</p>	<p>MALS</p>	<p>MISSED APPROACH: Climb to 1500 then climbing left turn to 2800 direct LAW VOR/DME and hold, continue climb-in-hold to 2800.</p>
---	--------------------	---

ATIS 120.75	FORT SILL APP CON 120.55 322.4	LAWTON TOWER * 119.9(CTAF) 257.8	GND CON 121.9	UNICOM 122.95
-----------------------	--	--	-------------------------	-------------------------



ELEV 1110	TDZE 1089
-----------	-----------



CATEGORY	A	B	C	D
S-ILS 35	1289-½		200 (200-½)	
S-LOC 35	1500-½	411 (400-½)	1500-¾	411 (400-¾)
CIRCLING	1620-1	510 (600-1)	1820-2	1820-2¼
			710 (800-2)	710 (800-2¼)

FAF to MAP 3.5 NM					
Knots	60	90	120	150	180
Min:Sec	3:30	2:20	1:45	1:24	1:10

SC-1, 11 JUL 2024 to 08 AUG 2024

SC-1, 11 JUL 2024 to 08 AUG 2024