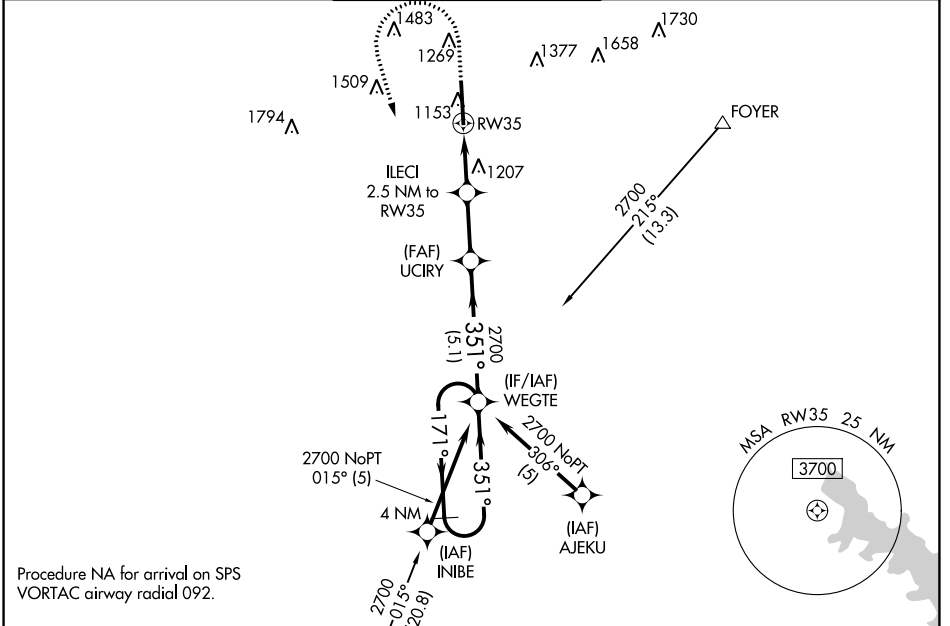


WAAS CH 77640 W35A	APP CRS 351°	Rwy Idg TDZE Apt Elev	8599 1089 1110
--	------------------------	-----------------------------	---

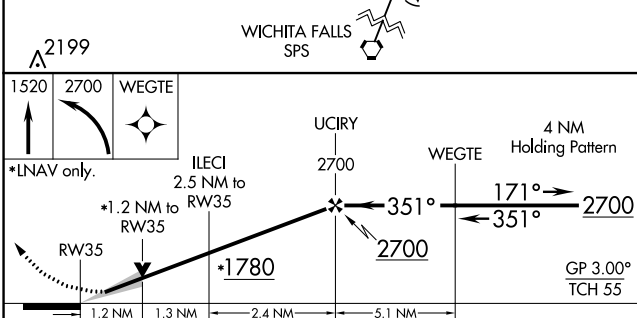
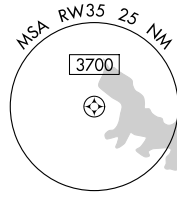
RNAV (GPS) RWY 35

LAWTON-FORT SILL RGNL (LAW)

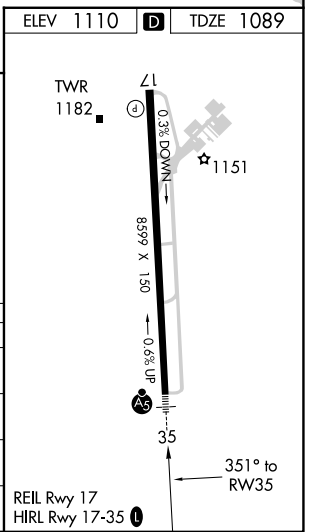
RNP APCH.		LAWTON TOWER * 119.9 (CTAF) 0 257.8		GND CON 121.9	UNICOM 122.95
ATIS 120.75	FORT SILL APP CON 120.55 322.4				



Procedure NA for arrival on SPS VORTAC airway radial 092.



CATEGORY	A	B	C	D
LPV DA		1289-1/2	200 (200-1/2)	
LNAV/VNAV DA		1376-1/2	287 (300-1/2)	
LNAV MDA	1520-1/2	431 (500-1/2)	1520-3/4	431 (500-3/4)
C CIRCLING	1620-1	510 (600-1)	1820-2 710 (800-2)	1820-2 1/4 710 (800-2 1/4)



SC-1, 11 JUL 2024 to 08 AUG 2024

SC-1, 11 JUL 2024 to 08 AUG 2024