

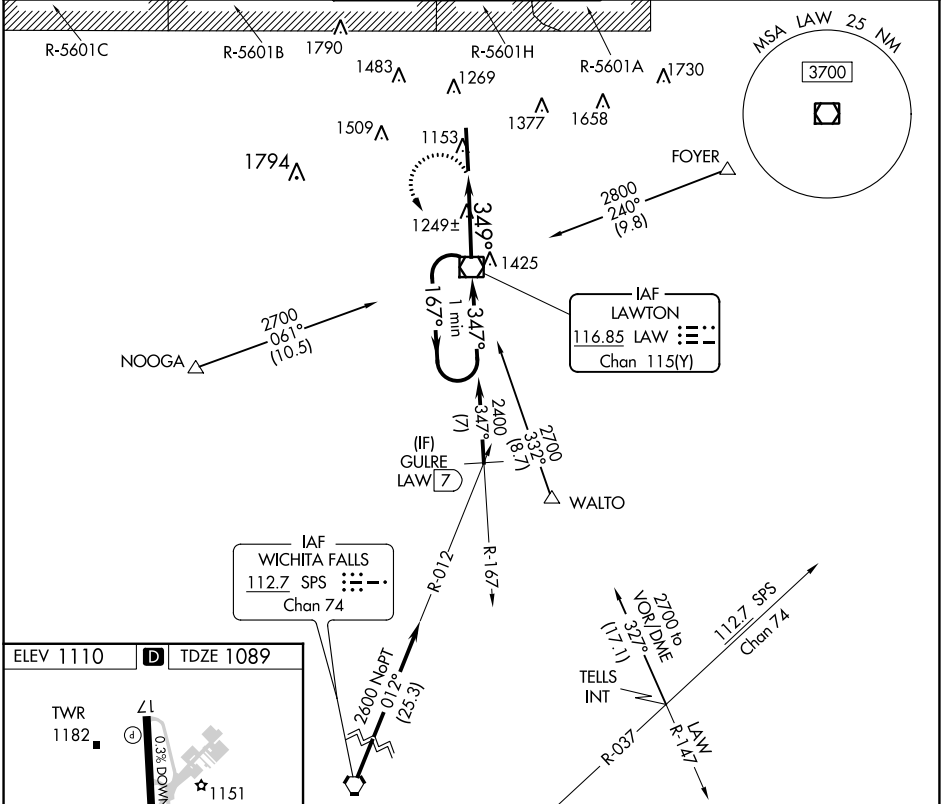
VOR/DME LAW <b>116.85</b> Chan <b>115(Y)</b>	APP CRS <b>349°</b>	Rwy Idg <b>8599</b> TDZE <b>1089</b> Apt Elev <b>1110</b>
--	------------------------	--

# VOR RWY 35

LAWTON-FORT SILL RGNL (LAW)

For inop ALS, increase Cat C/D visibility to 1½ SM. ASR		MISSED APPROACH: Climbing left turn to 2800 direct LAW VOR/DME and hold, continue climb-in-hold to 2800.

ATIS <b>120.75</b>	FORT SILL APP CON <b>120.55 322.4</b>	LAWTON TOWER ★ <b>119.9(CTAF) 257.8</b>	GND CON <b>121.9</b>	UNICOM <b>122.95</b>
-----------------------	--	--	-------------------------	-------------------------



ELEV 1110 **D** TDZE 1089

TWR 1182

REIL Rwy 17  
HIRL Rwy 17-35

FAF to MAP 3.5 NM

Knots	60	90	120	150	180
Min:Sec	3:30	2:20	1:45	1:24	1:10

CATEGORY	A	B	C	D
S-35	1500-½ 411 (500-½)		1500-¾ 411 (500-¾)	
<input checked="" type="checkbox"/> CIRCLING	1620-1 510 (600-1)		1820-2 710 (800-2)	1820-2½ 710 (800-2½)

SC-1, 11 JUL 2024 to 08 AUG 2024

SC-1, 11 JUL 2024 to 08 AUG 2024