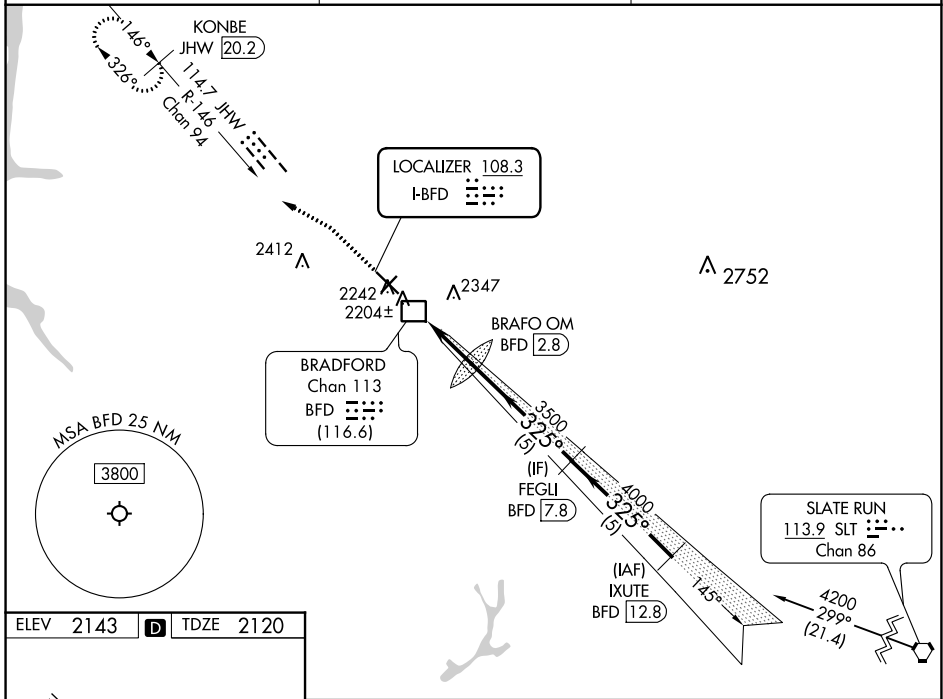


LOC I-BFD <b>108.3</b>	APP CRS <b>325°</b>	Rwy Idg TDZE Apt Elev	<b>6306</b> <b>2120</b> <b>2143</b>
---------------------------	------------------------	-----------------------------	---

# ILS or LOC RWY 32

BRADFORD RGNL (BFD)

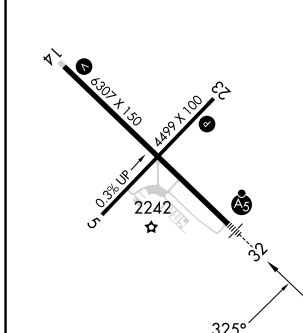
DME required		MALSR 	MISSED APPROACH: Climb to 2600 then climbing left turn to 4500 on heading 310° and on JHW VOR/DME R-146 to KONBE/JHW 20.2 DME and hold.
	NA Inop table does not apply to S-ILS 32 and S-LOC 32 Cats A and B. For inop ALS, increase S-LOC 32 Cat C/D visibility to 1½ SM.		
ASOS <b>133.825</b>	CLEVELAND CENTER <b>124.325 353.85</b>	UNICOM <b>123.075</b> (CTAF)	



NE-4, 11 JUL 2024 to 08 AUG 2024

NE-4, 11 JUL 2024 to 08 AUG 2024

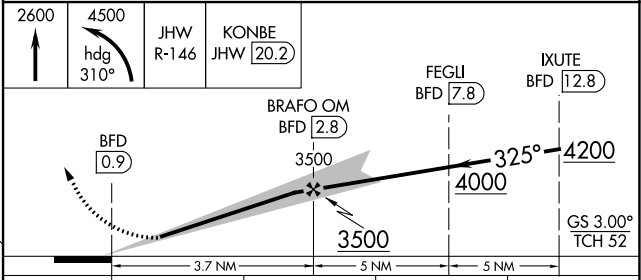
ELEV 2143	<b>D</b>	TDZE 2120
-----------	----------	-----------



MIRL Rwy 5-23   
 HIRL Rwy 14-32   
 REIL Rwy 5, 14 and 23

FAF to MAP 3.7 NM

Knots	60	90	120	150	180
Min:Sec	3:42	2:28	1:51	1:29	1:14



CATEGORY	A	B	C	D
S-ILS 32		2370-1	250 (300-1)	
S-LOC 32		2480-1	360 (400-1)	
CIRCLING	2600-1 457 (500-1)	2620-1 477 (500-1)	2720-1½ 577 (600-1½)	2760-2 617 (700-2)