

LOC I-INS 108.7	APP CRS 077°	Rwy Ldg TDZE Apt Elev	6118 399 403
---------------------------	------------------------	-----------------------------	---

ILS or LOC RWY 8

LANCASTER (LNS)

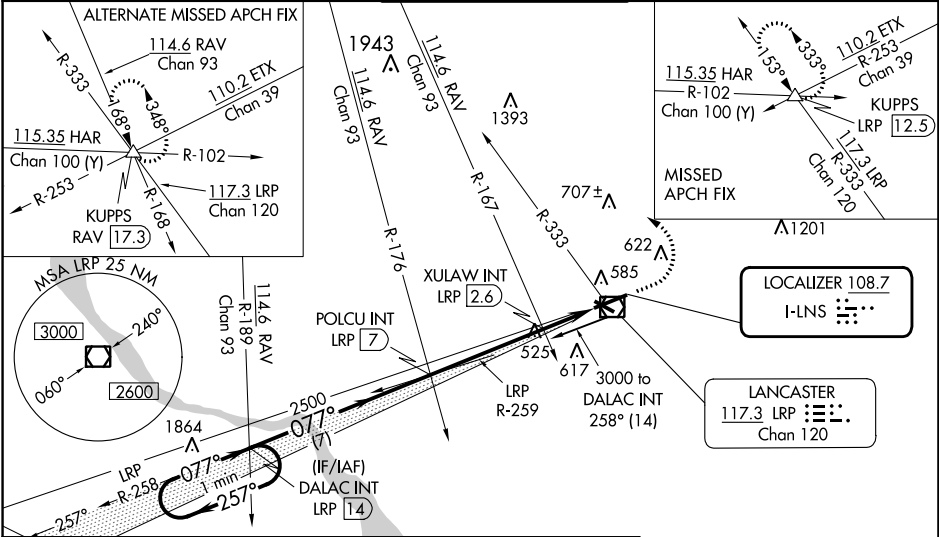
⚠ Night landing: Rwy 13, 31 NA. When local altimeter setting not received, use Harrisburg Intl altimeter setting and increase S-ILS DA to 664 feet; increase all MDA's 80 feet and visibility S-LOC 8 Cats C/D and Circling Cats B/D visibility ¼ SM, increase Circling Cat C visibility ½ SM, increase XULAW fix minimums S-LOC 8 and Circling Cats C/D visibility ¼ SM. For inop MALSR, increase S-LOC 8 Cats C and D visibility ¾ mile. For inop MALSR when using Harrisburg Intl altimeter setting increase S-ILS 8 visibility all Cats ½ mile, S-LOC 8 Cats B visibility ¾ mile, Cat C, D 1 mile, increase Circling Cat B, D visibility ¼ mile. XULAW Fix minimums increase S-LOC 8 Cats C and D visibility to 1 ½ mile and Circling Cat C visibility to 1 ¾ mile.

MALSR



MISSED APPROACH:
Climb to 1200 then climbing left turn to 3000 on LRP VOR/DME R-333 to KUPPS INT/LRP 12.5 DME and hold.

ATIS 125.675	HARRISBURG APP CON 126.45 281.525	LANCASTER TOWER* 120.9 (CTAF) 0 251.1	GND CON 121.8	UNICOM 122.95
------------------------	---	--	-------------------------	-------------------------



NE-4, 11 JUL 2024 to 08 AUG 2024

NE-4, 11 JUL 2024 to 08 AUG 2024

*1160 when using Harrisburg Intl altimeter setting.				ELEV 403	TDZE 399
One Minute Holding Pattern		DALAC INT LRP 14		KUPPS	
3000 ← 257°		2500		*LOC only.	
GS 3.00° TCH 40		077°		LRP R-333	
VGSI and descent angles not coincident (VGSI Angle 3.00/TCH 40).		2500		LRP VOR/DME	
7 NM		4.4 NM		2.1 NM	
CATEGORY	A	B	C	D	
S-ILS 8	599-½		200 (200-½)		
S-LOC 8	1080-½ 681 (700-½)		1080-1½ 681 (700-1½)		
CIRCLING	1080-1 677 (700-1)		1080-2 677 (700-2)		1080-2¼ 677 (700-2¼)
XULAW FIX MINIMUMS (DUAL VOR RECEIVERS OR DME REQUIRED)					
S-LOC 8	800-½ 401 (400-½)		800-¾ 401 (400-¾)		
CIRCLING	940-1 537 (600-1)		960-1 ½ 557 (600-1 ½)		1060-2 657 (700-2)
				REIL Rwy 31	
				HIRL Rwy 8-26	
				MIRL Rwy 13-31	
				FAF to MAP 6.5 NM	
Knots		60	90	120	150 180
Min:Sec		6:30	4:20	3:15	2:36 2:10