

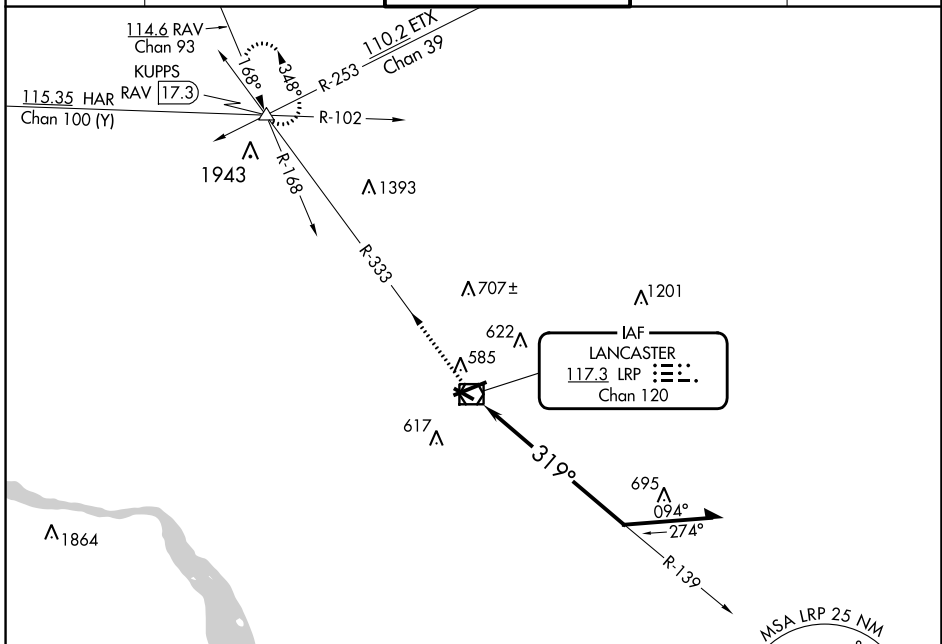
VOR/DME LRP 117.3 Chan 120	APP CRS 319°	Rwy Idg 4102 TDZE 403 Apt Elev 403
--	------------------------	---

VOR RWY 31

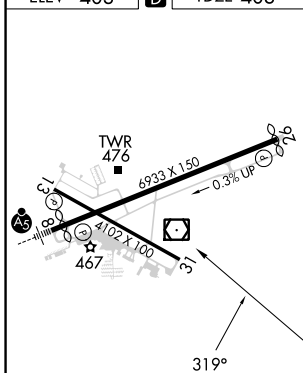
LANCASTER (LNS)

<p>⚠ Night landing: Rwy 13, 31 NA. ⚠ Helicopter visibility reduction below 1 SM NA.</p>	<p>MISSED APPROACH: Climb to 3000 via LRP VOR/DME R-333 to KUPPS INT/RAV 17.3 DME and hold.</p>
---	---

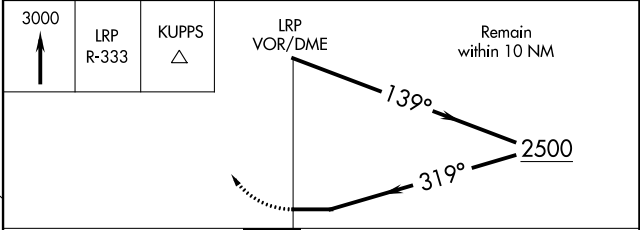
<p>ATIS 125.675</p>	<p>HARRISBURG APP CON 126.45 281.525</p>	<p>LANCASTER TOWER★ 120.9 (CTAF) 251.1</p>	<p>GND CON 121.8</p>	<p>UNICOM 122.95</p>
--------------------------------	---	---	---------------------------------	---------------------------------



ELEV 403 **D** TDZE 403



3000	LRP R-333	KUPPS △	LRP VOR/DME	Remain within 10 NM
------	-----------	---------	-------------	---------------------



CATEGORY	A	B	C	D
S-31	1060-1	657 (700-1)	1060-1¾ 657 (700-1¾)	1060-2 657 (700-2)
CIRCLING	1060-1	657 (700-1)	1060-1¾ 657 (700-1¾)	1080-2¼ 677 (700-2¼)

- REIL Rwy 31
- HIRL Rwy 8-26
- MIRL Rwy 13-31

NE-4, 11 JUL 2024 to 08 AUG 2024

NE-4, 11 JUL 2024 to 08 AUG 2024