

HI-TACAN Z RWY 23L/R

TACAN NTU
Chan 113

APCH CRS
244°

Rwy Idg 23L **12,001** 23R **8000**
TDZE 23L **21** 23R **20**
Arprt Elev

AL-934 [USN]

OCEANA NAS (APOLLO SOUCEK FLD) (KNTU)

▲ * When ALS inop, increase CAT CDE vis to 1½ miles
ALS-F-1

MISSED APPROACH: Climb to 3000 via R-064 to NTU TACAN, and via R-223 to GRAIT and hold.

ATIS
317.6

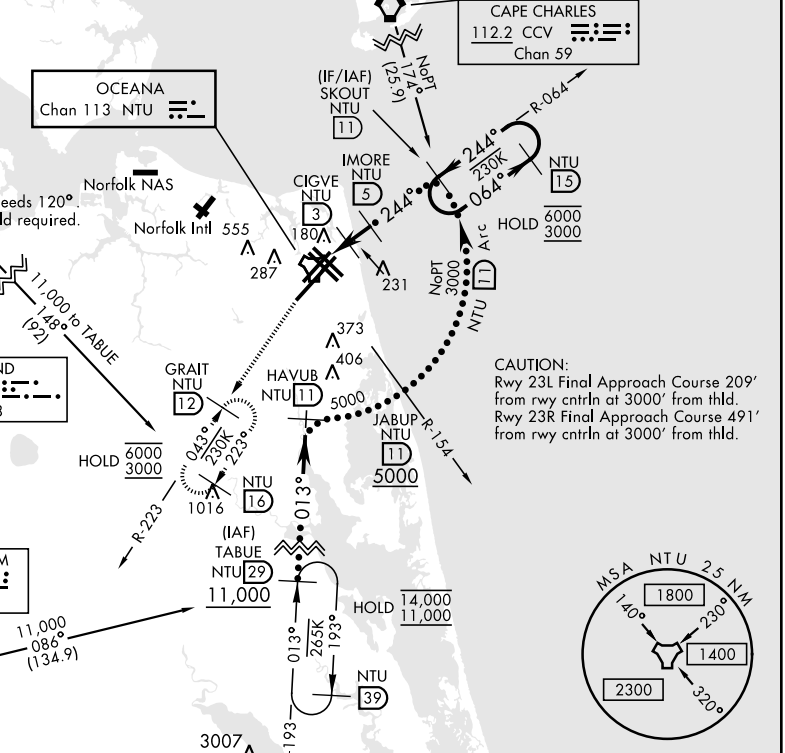
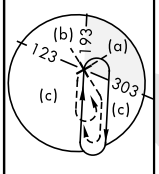
APP/DEP CON
123.9 266.8

TOWER
127.075 360.2

GND CON
119.6 336.4

CLNC DEL
254.4

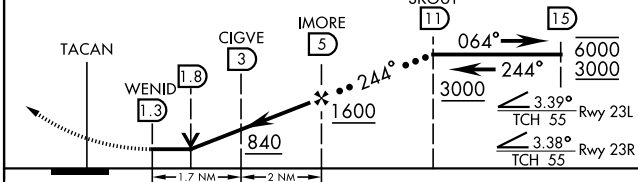
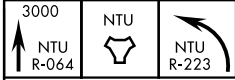
ASR/
PAR



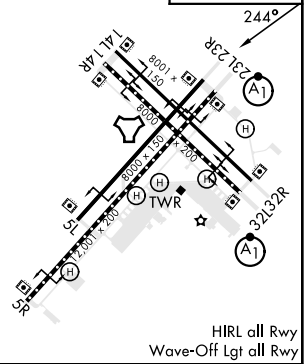
Richmond feeder exceeds 120°
RADAR or turn in hold required.

CAUTION:
Rwy 23L Final Approach Course 209°
from rwy cntrln at 3000' from thld.
Rwy 23R Final Approach Course 491°
from rwy cntrln at 3000' from thld.

EMERG SAFE ALT 100 NM 4100



ELEV 22 TDZE 23L 21 TDZE 23R 20



CATEGORY	C	D	E
S-23L*	440-¾	419 (500-¾)	
S-23R	440-1½	420 (500-1½)	
CIRCLING	600-1½ 578 (600-1½)	600-2 578 (600-2)	900-3 878 (900-3)

VIRGINIA BEACH, VIRGINIA

36°49'N-76°02'W

OCEANA NAS (APOLLO SOUCEK FLD) (KNTU)

Orig 27JAN22

HI-TACAN Z RWY 23L/R

NE-3, 11 JUL 2024 to 08 AUG 2024

NE-3, 11 JUL 2024 to 08 AUG 2024