

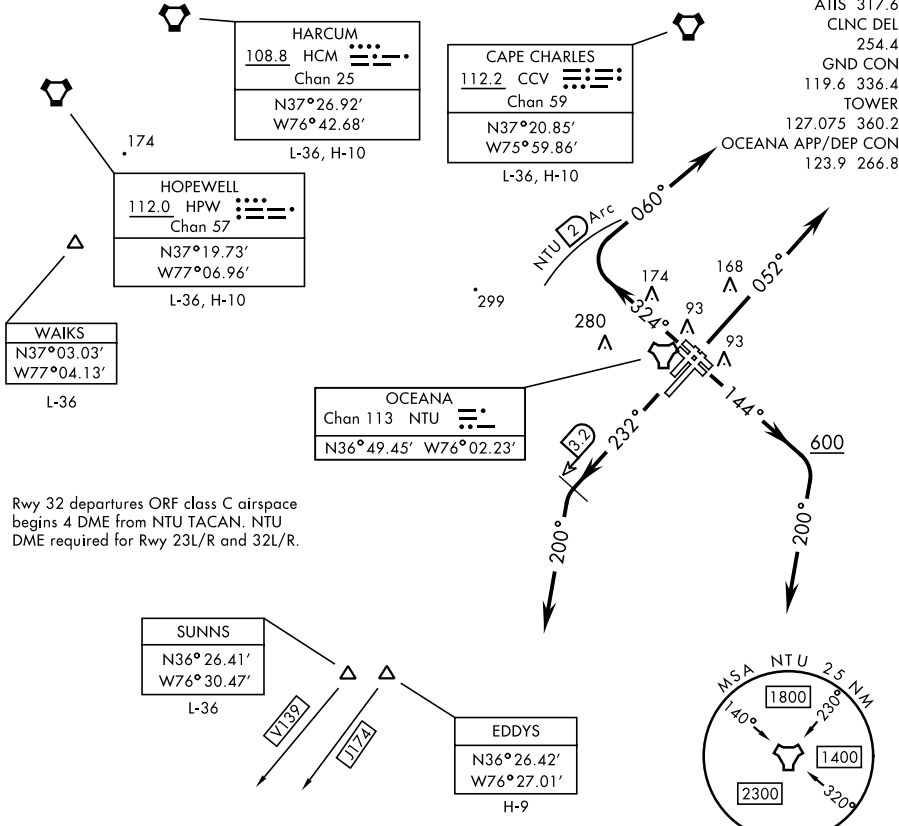
OCEANA-FIVE DEPARTURE (NTU5•NTU)

OCEANA NAS (APOLLO SOUCEK FLD) (KNTU)

AL-934 [USN]

VIRGINIA BEACH, VIRGINIA

ATIS 317.6
 CLNC DEL 254.4
 GND CON 119.6 336.4
 TOWER 127.075 360.2
 OCEANA APP/DEP CON 123.9 266.8



Rwy 32 departures ORF class C airspace begins 4 DME from NTU TACAN. NTU DME required for Rwy 23L/R and 32L/R.

NE-3, 11 JUL 2024 to 08 AUG 2024

NE-3, 11 JUL 2024 to 08 AUG 2024

RADAR REQUIRED

NOTE: Chart not to scale.

DEPARTURE ROUTE DESCRIPTION

TAKE-OFF RWY 5L/R: Climb heading 052°. Thence...

TAKE-OFF RWY 14L/R: Climb heading 144° to 600 then climbing right turn heading 200°. Thence...

TAKE-OFF RWY 23L/R: Climb heading 232°, crossing NTU TACAN 3.2 DME, turn left heading 200°. Thence...

TAKE-OFF RWY 32L/R: Climb heading 324° to assigned altitude, turn right heading 060° within NTU TACAN 2 DME. Thence...

...maintain 4000 or assigned lower altitude.

CAPE CHARLES TRANSITION (NTU5.CCV): Via RADAR vectors to CCV VORTAC.

EDDYS TRANSITION (NTU5.EDDYS): Via RADAR vectors to EDDYS.

HARCUM TRANSITION (NTU5.HCM): Via RADAR vectors to HCM VORTAC.

HOPEWELL TRANSITION (NTU5.HPW): Via RADAR vectors to HPW VORTAC.

(At or below 17,000 only).

SUNNS TRANSITION (NTU5.SUNNS): Via RADAR vectors to SUNNS.

(At or below 17,000 only).

WAIKS TRANSITION (NTU5.WAIKS): Via RADAR vectors to WAIKS.

OCEANA-FIVE DEPARTURE (NTU5•NTU)

VIRGINIA BEACH, VIRGINIA

OCEANA NAS (APOLLO SOUCEK FLD) (KNTU)