


# RNAV (GPS) RWY 32L/R

APCH CRS <b>325°</b>	Rwy Idg	<b>8000</b>	<b>8001</b>
	TDZE	<b>22</b>	<b>20</b>
	Arprt Elev	<b>22</b>	

AL-934 (USN) OCEANA NAS (APOLLO SOUCEK FLD) (KNTU)

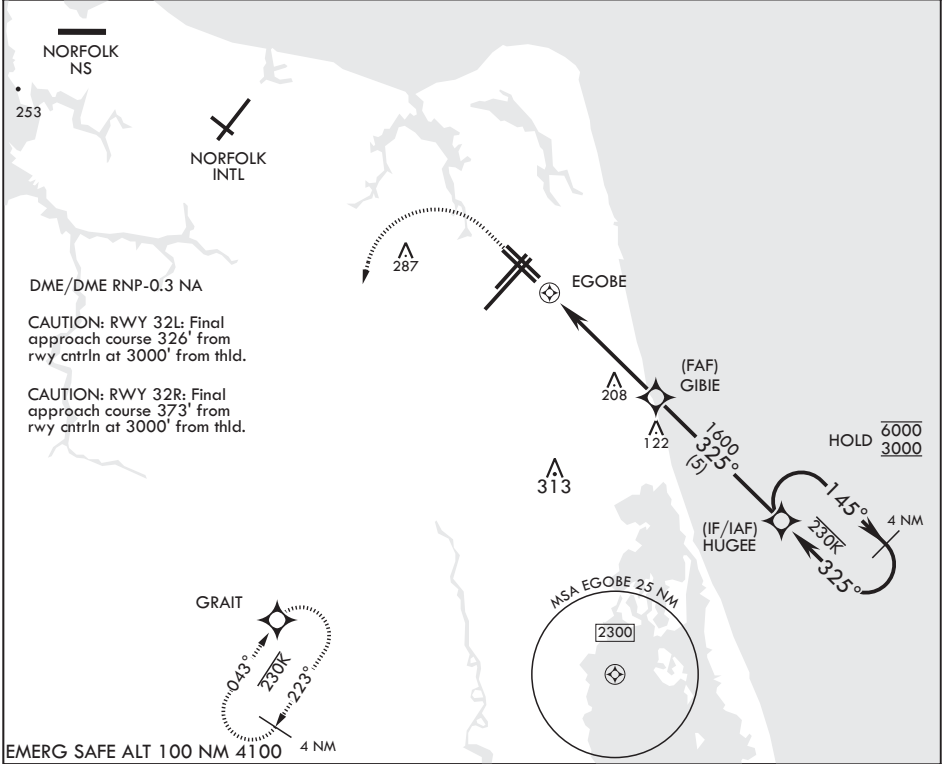
**V** \* When ALS inop increase CAT AB vis to 1 mile, CAT CD vis to 1 1/8 miles.

Rwy 32L  
ALSF-1



MISSED APPROACH: Climbing 1100 then climbing left turn to 3000 direct GRAIT and hold.

ATIS <b>317.6</b>	APP CON/DEP CON <b>123.9 266.8</b>	TOWER <b>127.075 360.2</b>	GND CON <b>119.6 336.4</b>	CLNC DEL <b>254.4</b>	ASR/PAR
----------------------	---------------------------------------	-------------------------------	-------------------------------	--------------------------	---------



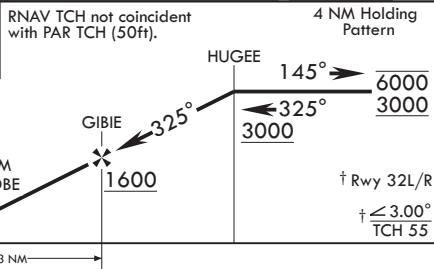
EMERG SAFE ALT 100 NM 4100 4 NM

1100 crs 325°

3000

GRAIT

RNAV TCH not coincident with PAR TCH (50ft).

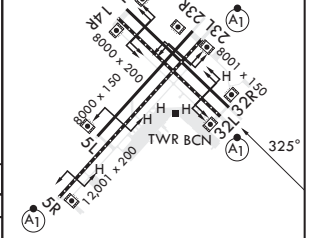


ELEV 22

TDZE 32L 22

TDZE 32R 20

CATEGORY	A	B	C	D
LNAV MDA	460-1	440 (500-1)	460-1/4	440 (500-1/4)
LNAV MDA*	460-1/2	438 (500-1/2)	460-3/4	438 (500-3/4)
◻ CIRCLING	500-1	478 (500-1)	600-1 1/2 578 (600-1 1/2)	600-2 578 (600-2)



HIRL all Rwys  
Wave-Off Lights all Rwys

# RNAV (GPS) RWY 32L/R

NE-3, 11 JUL 2024 to 08 AUG 2024

NE-3, 11 JUL 2024 to 08 AUG 2024