


LOC/DME I-EAU 109.5 Chan 32	APP CRS 224°	Rwy Idg 7301 TDZE 913 Apt Elev 913
---	------------------------	---

ILS or LOC RWY 22

CHIPPEWA VALLEY RGNL (EAU)

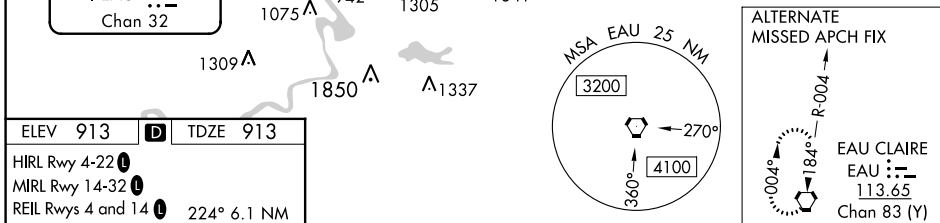
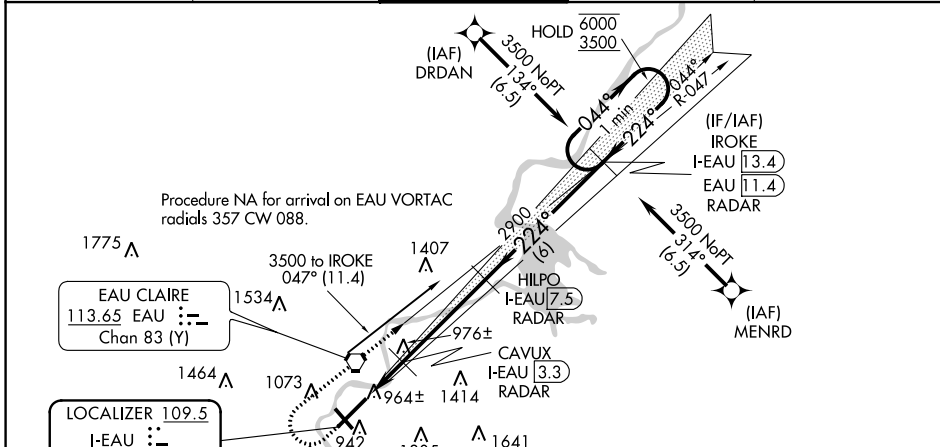
From DRDAN and MENRD RNAV-1 GPS required.
DME or RADAR required.

⚠ For inop ALS increase S-LOC 22 Cat C and D visibility to ¾ SM. For inop ALS when using Rice Lake altimeter setting, increase S-ILS 22 all Cats visibility to 1 SM. When local altimeter setting not received, use Rice Lake altimeter setting and increase DA 110 feet and all MDA 120 feet, increase S-LOC 22 Cat C and D and Circling Cat C visibility ¼ SM. VDP NA when using Rice Lake altimeter setting.

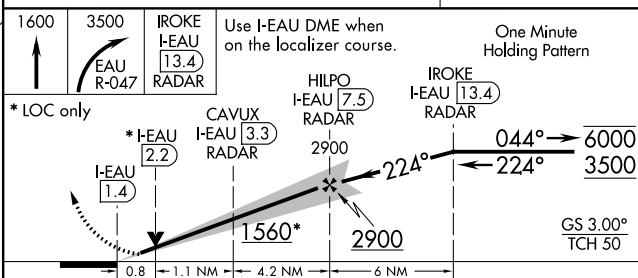
MALSR 

MISSED APPROACH: Climb to 1600 then climbing right turn to 3500 on EAU VORTAC R-047 to IROKE/I-EAU LOC/DME 13.4 DME/RADAR and hold.

ATIS 126.025	MINNEAPOLIS CENTER 125.3 335.6	EAU CLAIRE TOWER ★ 118.575 (CTAF) 0	GND CON 120.925	UNICOM 122.95
------------------------	--	---	---------------------------	-------------------------



ELEV 913 D TDZE 913
HIRL Rwy 4-22 0
MIRL Rwy 14-32 0
REIL Rwys 4 and 14 0
224° 6.1 NM from FAF
TWR 968 0
941 0
5000 X 100
8101 X 150
0.6% DOWN
FAF to MAP 6.1 NM
Knots 60 90 120 150 180
Min:Sec 6:06 4:04 3:03 2:26 2:02



CATEGORY	A	B	C	D
S-ILS 22	1113-½	200 (200-½)		
S-LOC 22	1220-½	307 (400-½)		
C CIRCLING	1480-1 567 (600-1)	1540-1 627 (700-1)	1660-2¼ 747 (800-2¼)	2200-3 1287 (1300-3)

EC-3, 11 JUL 2024 to 08 AUG 2024

EC-3, 11 JUL 2024 to 08 AUG 2024