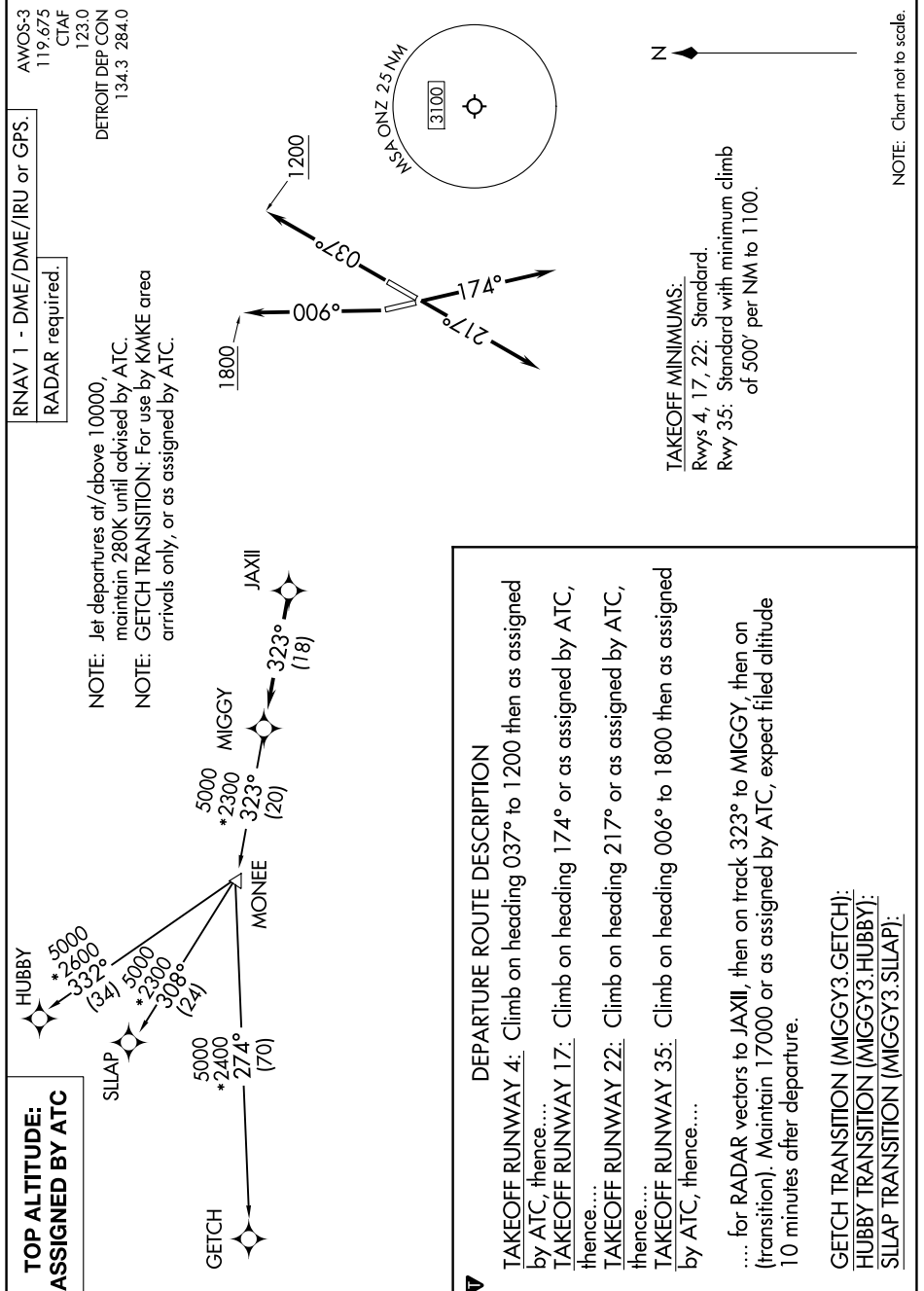


EC-1, 11 JUL 2024 to 08 AUG 2024



EC-1, 11 JUL 2024 to 08 AUG 2024

DEPARTURE ROUTE DESCRIPTION

TAKEOFF RUNWAY 4: Climb on heading 037° to 1200 then as assigned by ATC, thence....

TAKEOFF RUNWAY 17: Climb on heading 174° or as assigned by ATC, thence....

TAKEOFF RUNWAY 22: Climb on heading 217° or as assigned by ATC, thence....

TAKEOFF RUNWAY 35: Climb on heading 006° to 1800 then as assigned by ATC, thence....

.... for RADAR vectors to JAXII, then on track 323° to MIGGY, then on (transition). Maintain 17000 or as assigned by ATC, expect filed altitude 10 minutes after departure.

GETCH TRANSITION (MIGGY3.GETCH):
HUBBY TRANSITION (MIGGY3.HUBBY):
SLLAP TRANSITION (MIGGY3.SLLAP):