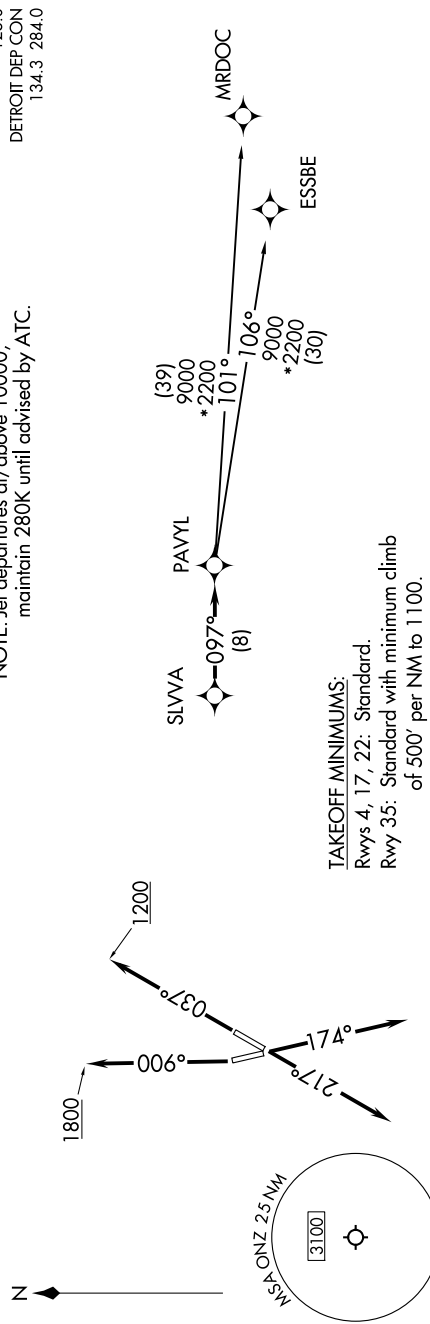


EC-1, 11 JUL 2024 to 08 AUG 2024

**TOP ALTITUDE:  
ASSIGNED BY ATC**

RNAV 1 - DME/DME/IRU or GPS.  
RADAR required.



NOTE: Chart not to scale.

**TAKEOFF MINIMUMS:**  
Rwys 4, 17, 22: Standard.  
Rwy 35: Standard with minimum climb of 500' per NM to 1100.

**DEPARTURE ROUTE DESCRIPTION**

- TAKEOFF RUNWAY 4: Climb on heading 037° to 1200 then as assigned by ATC, thence....
- TAKEOFF RUNWAY 17: Climb on heading 174° or as assigned by ATC, thence....
- TAKEOFF RUNWAY 22: Climb on heading 217° or as assigned by ATC, thence....
- TAKEOFF RUNWAY 35: Climb on heading 006° to 1800 then as assigned by ATC, thence....

....for RADAR vectors to SLVVA, then on track 097° to PAVYL, then on (transition). Maintain 17000 or as assigned by ATC, expect filed altitude 10 minutes after departure.

ESSBE TRANSITION (PAVYL3.ESSBE):  
MRDOC TRANSITION (PAVYL3.MRDOC):

EC-1, 11 JUL 2024 to 08 AUG 2024