

VOR/DME ALO 112.2 Chan 59	APP CRS 176°	Rwy Idg TDZE Apt Elev	6003 871 873
---	------------------------	-----------------------------	---

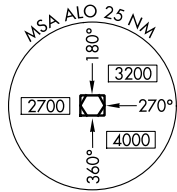
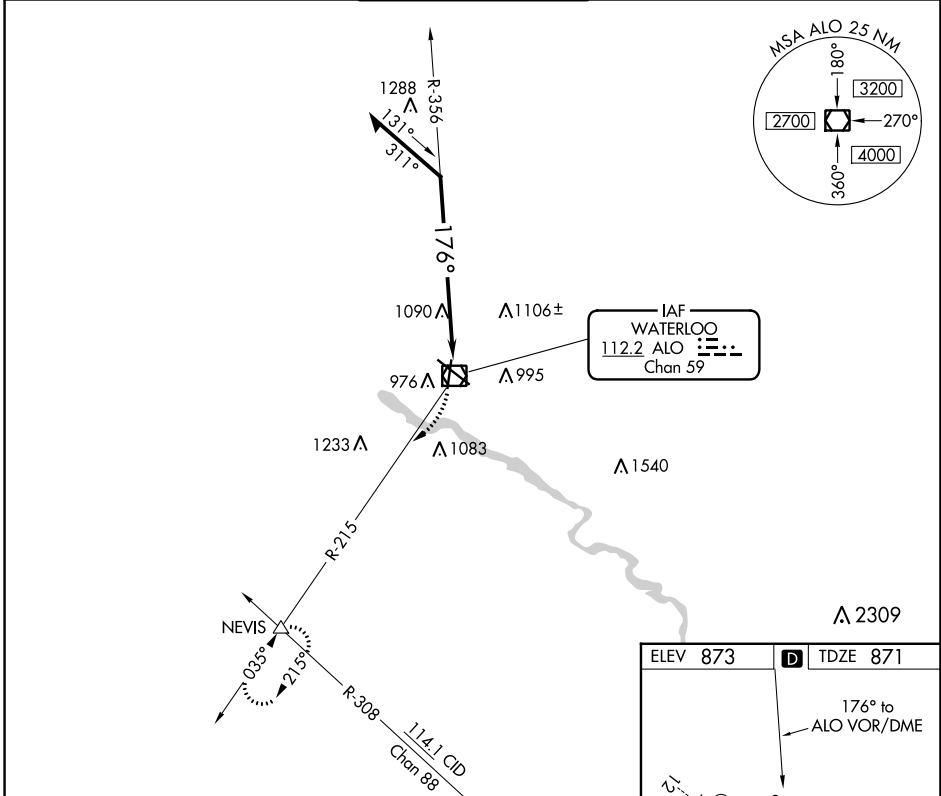
VOR RWY 18

WATERLOO RGNL (ALO)

⚠ Rwy 18 helicopter visibility reduction below 3/4 SM AN.

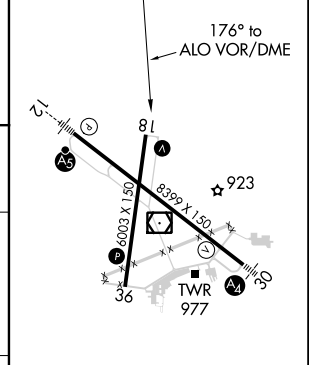
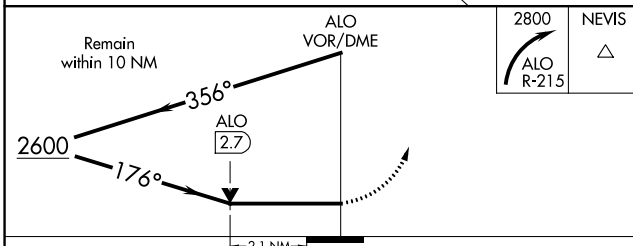
⚠ MISSED APPROACH: Climbing right turn to 2800 on ALO VOR/DME R-215 to NEVIS INT and hold.

ATIS 120.65	WATERLOO APP CON * 118.9 251.15	WATERLOO TOWER * 125.075 (CTAF) 257.8	GND CON 121.9 269.1	UNICOM 122.95
-----------------------	---	---	-------------------------------	-------------------------



IAF
WATERLOO
112.2 ALO
Chan 59

ELEV 873	D TDZE 871
----------	-------------------



CATEGORY	A	B	C	D
S-18	1600-1 729 (800-1)		1600-2 729 (800-2)	
C CIRCLING	1600-1 727 (800-1)		1600-2 727 (800-2)	1600-2 1/4 727 (800-2 1/4)

HIRL Rwy 12-30
MIRL Rwy 18-36
REIL Rws 18 and 36

NC-3, 11 JUL 2024 to 08 AUG 2024

NC-3, 11 JUL 2024 to 08 AUG 2024