

WAAS CH 53620 W15A	APP CRS 149°	Rwy Idg 5186
		TDZE 99
		Apt Elev 99

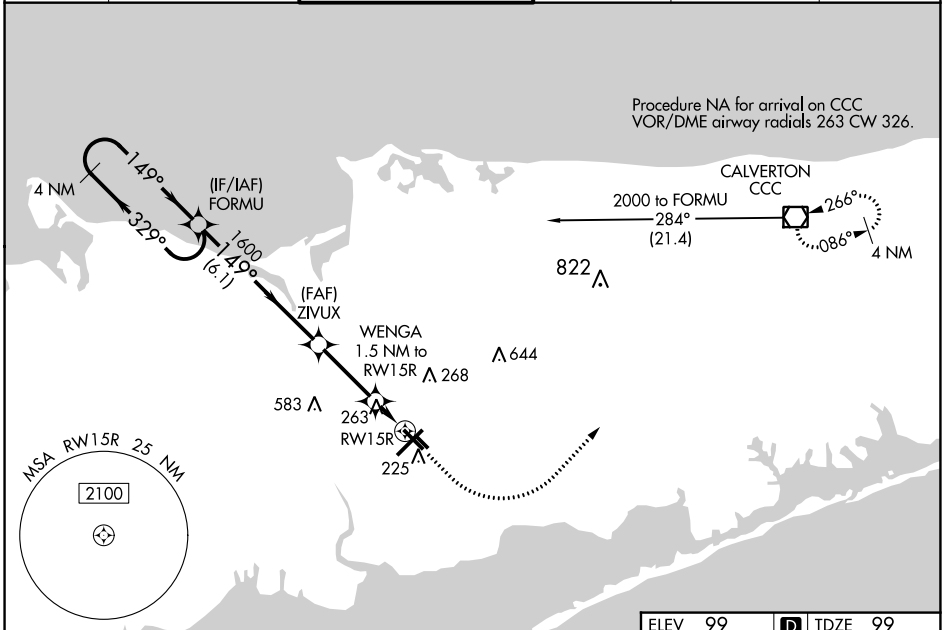
RNAV (GPS) RWY 15R

LONG ISLAND MAC ARTHUR (ISP)

⚠ Baro-VNAV NA when using Shirley altimeter setting. For uncompensated Baro-VNAV systems, procedure NA below -1.4°C (7°F) or above 46°C (115°F). DME/DME RNP-0.3 NA. When local altimeter setting not received, use Shirley altimeter setting and increase LPV DA to 442 feet, LNAV/VNAV DA to 575 feet and LNAV/VNAV visibility all Cats 1/8 mile; all MDAs 40 feet, LNAV C/D visibility 1/8 mile, and Circling C/D visibility 1/4 mile. Helicopter visibility reduction below 3/4 SM NA.

⚠ MISSED APPROACH: Climb to 600 then climbing left turn to 2000 direct CCC VOR/DME and hold.

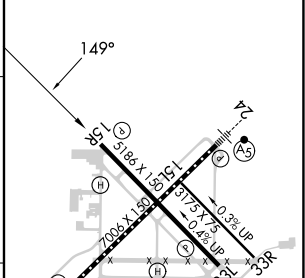
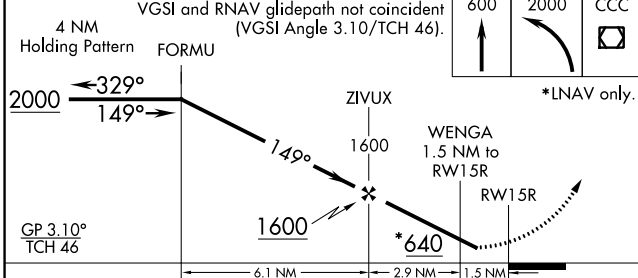
ATIS 120.725	NEW YORK APP CON 120.05 343.75	LONG ISLAND TOWER* 119.3 (CTAF) 335.5	GND CON 135.3	CLNC DEL 121.85	UNICOM 122.95
------------------------	--	---	-------------------------	---------------------------	-------------------------



NE-2, 11 JUL 2024 to 08 AUG 2024

NE-2, 11 JUL 2024 to 08 AUG 2024

ELEV 99	D TDZE 99
----------------	-------------------------



CATEGORY	A	B	C	D
LPV DA	414-1		315 (400-1)	
LNAV/VNAV DA	547-1 3/8		448 (500-1 3/8)	
LNAV MDA	520-1	421 (500-1)	520-1 1/4	421 (500-1 1/4)
C CIRCLING	600-1 501 (600-1)	660-1 561 (600-1)	660-1 1/2 561 (600-1 1/2)	960-2 3/4 861 (900-2 3/4)

