

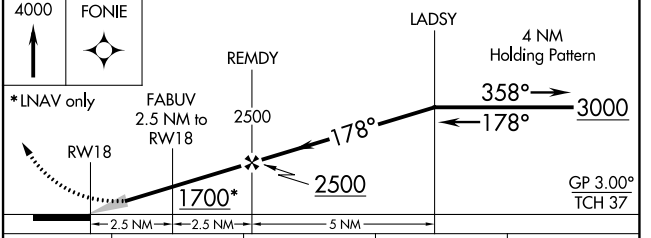
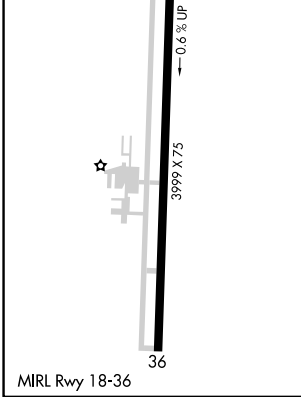
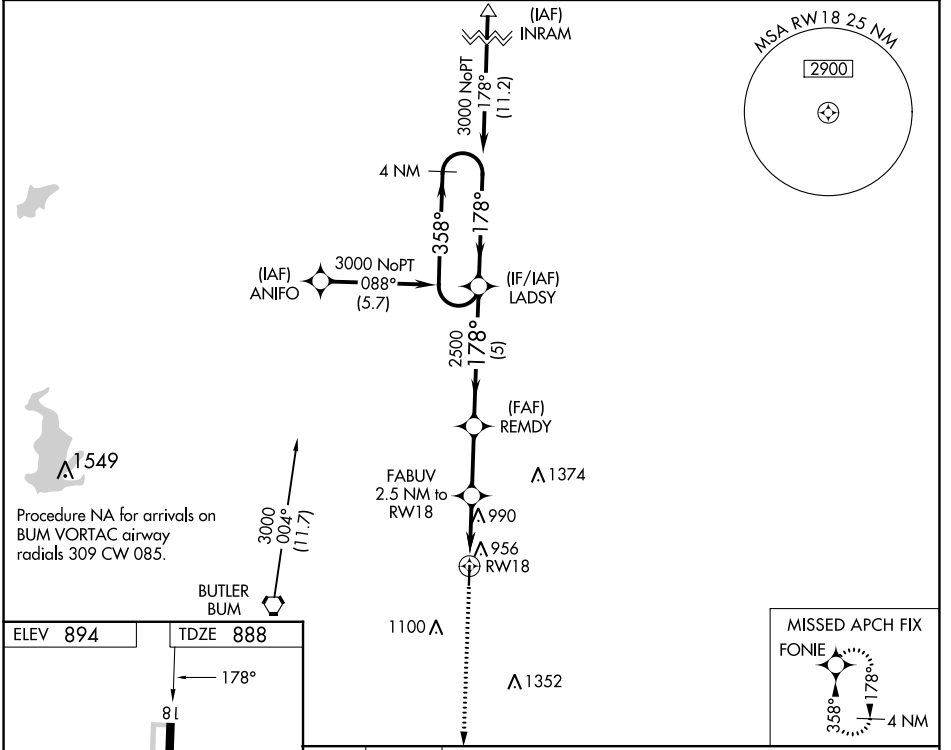
WAAS CH <b>82630</b> <b>W18A</b>	APP CRS <b>178°</b>	Rwy Idg TDZE <b>888</b> Apt Elev <b>894</b>
----------------------------------------	------------------------	---------------------------------------------------

# RNAV (GPS) RWY 18

BUTLER MEML (BUM)

RNP APCH.	MISSED APPROACH: Climb to 4000 direct FONIE and hold, continue climb in hold to 4000.
<p><b>▼</b> Baro-VNAV NA. Use Clinton altimeter setting; when not received, use Charles B Wheeler Downtown altimeter setting and increase all DA/MDA 60 feet, increase LPV and LNAV/VNAV all Cats visibility ¼ mile.</p> <p><b>▲</b> NA</p>	

KANSAS CITY CENTER <b>125.55 327.0</b>	CTAF <b>122.9</b>
-------------------------------------------	----------------------



CATEGORY	A	B	C	D
LPV DA	1220-1 1/8	332 (400-1 1/8)		NA
LNAV/VNAV DA	1220-1 1/8	332 (400-1 1/8)		NA
LNAV MDA	1340-1	452 (500-1)		NA

NC-3, 11 JUL 2024 to 08 AUG 2024

NC-3, 11 JUL 2024 to 08 AUG 2024