

LOC/DME I-RUT 111.7 Chan 54	APP CRS 194°	Rwy Idg 5004 TDZE 787 Apt Elev 787
---	------------------------	---

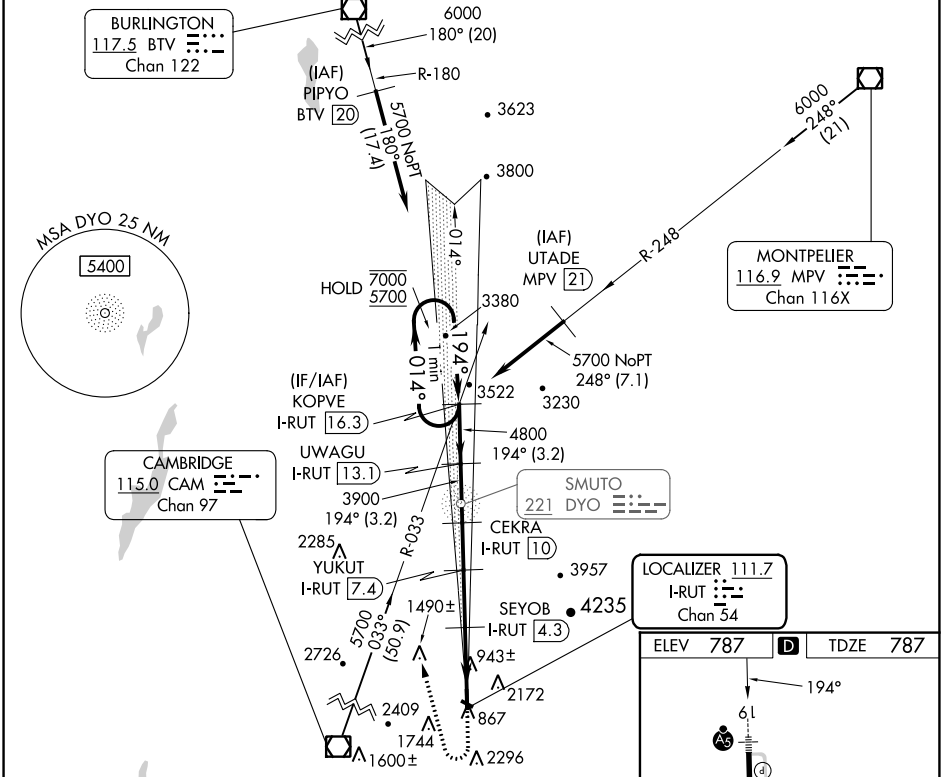
ILS Z or LOC Z RWY 19

RUTLAND/SOUTHERN VERMONT RGNL (RUT)

DME required.

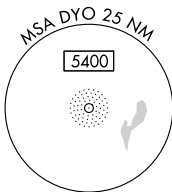
MALS R MISSED APPROACH: Climb to 1900 then climbing right turn to 5700 on heading 360° and CAM VOR/DME R-033 to KOPVE/I-RUT 16.31 DME and hold. If unable to meet climb gradient, see ILS Y or LOC Y Rwy 19. # Missed approach requires minimum climb of 425 feet per NM to 3200.

AWOS-3PT 118.375	BOSTON CENTER 135.7 282.2	UNICOM 122.8 (CTAF)
----------------------------	-------------------------------------	-------------------------------



BURLINGTON
117.5 BTW
Chan 122

MONTPELIER
116.9 MPV
Chan 116X

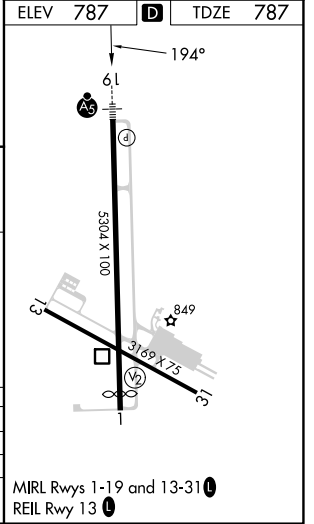


CAMBRIDGE
115.0 CAM
Chan 97

SMUTO
221 DYO

LOCALIZER 111.7
I-RUT
Chan 54

One Minute Holding Pattern	1900	5700	CAM R-033	KOPVE I-RUT 16.3
KOPVE I-RUT 16.3	UWAGU I-RUT 13.1	CEKRA I-RUT 10	YUKUT I-RUT 7.4	SEYOBB I-RUT 4.3
7000 ← 014°	5700 → 194°	4800 → 194°	3900 → 194°	3040 → 198°
GS 3.20°	TCH 54			
	3.2 NM	3.2 NM	2.5 NM	3.1 NM
			1.4 NM	2 NM
CATEGORY	A	B	C	D
S-ILS 19 #	1451-1½ 664 (700-1½)			
S-LOC 19 #	1520-1½ 733 (800-1½) 1520-1½ 733 (800-1½)			
CIRCLING	2160-1¼	2160-1½	2520-3	2760-3
	1373 (1400-1¼)	1373 (1400-1½)	1733 (1800-3)	1973 (2000-3)



NE-1, 11 JUL 2024 to 08 AUG 2024

NE-1, 11 JUL 2024 to 08 AUG 2024