

WAAS CH 45917 W32A	APP CRS 319°	Rwy Idg TDZE 24 Apr Elev 24	5608
--	------------------------	---	-------------

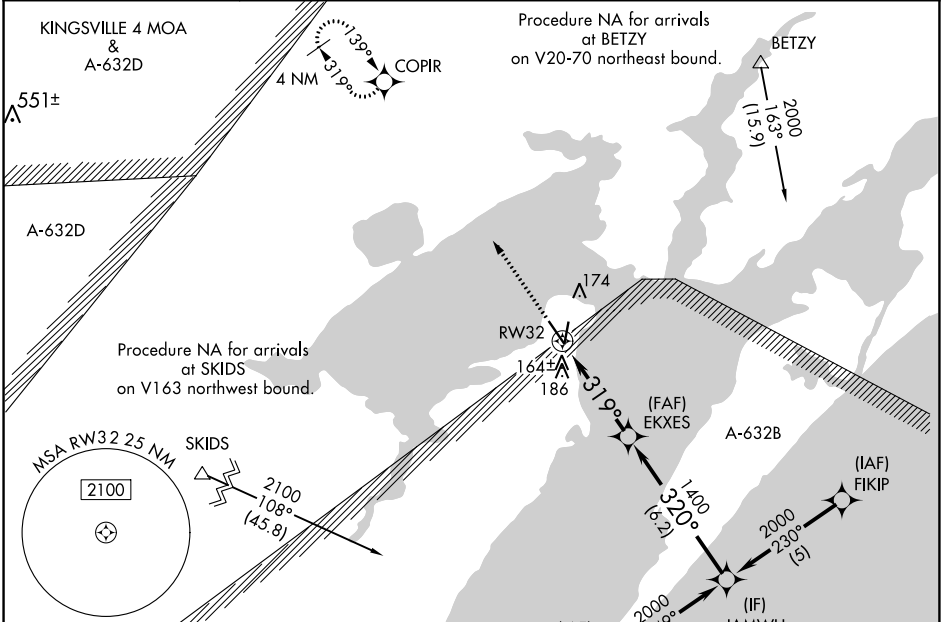
RNAV (GPS) RWY 32

ARANSAS COUNTY (R.K.P)

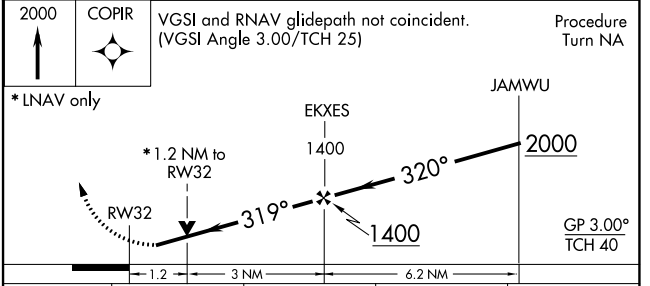
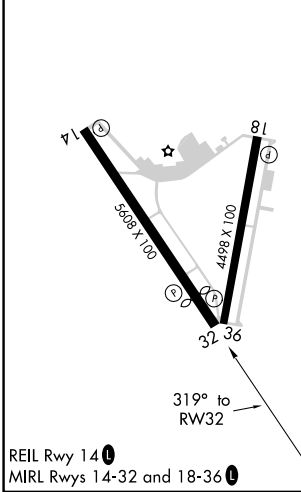
⚠ Baro-VNAV NA when using Ingleside altimeter setting. For uncompensated Baro-VNAV systems, LNAV/VNAV NA below -15°C (5°F) or above 54°C (130°F). DME/DME RNP-0.3 NA. Helicopter visibility reduction below ¾ SM NA. When local altimeter setting not received, use Ingleside altimeter setting and increase all DA 33 feet and all MDA 40 feet, increase LNAV Cat C visibility ¼ mile. VDP NA with Ingleside altimeter setting.

MISSED APPROACH:
Climb to 2000 direct COPIR and hold.

ASOS 119.275	CORPUS APP CON 120.9 348.725	CLNC DEL 121.7	UNICOM 123.05 (CTAF) 0
------------------------	--	--------------------------	----------------------------------



ELEV 24	TDZE 24
---------	---------



CATEGORY	A	B	C	D
LPV DA	274-1	250 (300-1)		NA
LNAV/VNAV DA	508-1¾	484 (500-1¾)		NA
LNAV MDA	420-1	396 (400-1)		NA
CIRCLING	500-1	476 (500-1)	500-1½ 476 (500-1½)	NA

SC-3, 11 JUL 2024 to 08 AUG 2024

SC-3, 11 JUL 2024 to 08 AUG 2024