

TACAN FOK Chan 47 (111.0)	APP CRS 230°	Rwy Idg TDZE 66 Apt Elev 66	9002 66 66
---------------------------------	-----------------	-----------------------------------	------------------

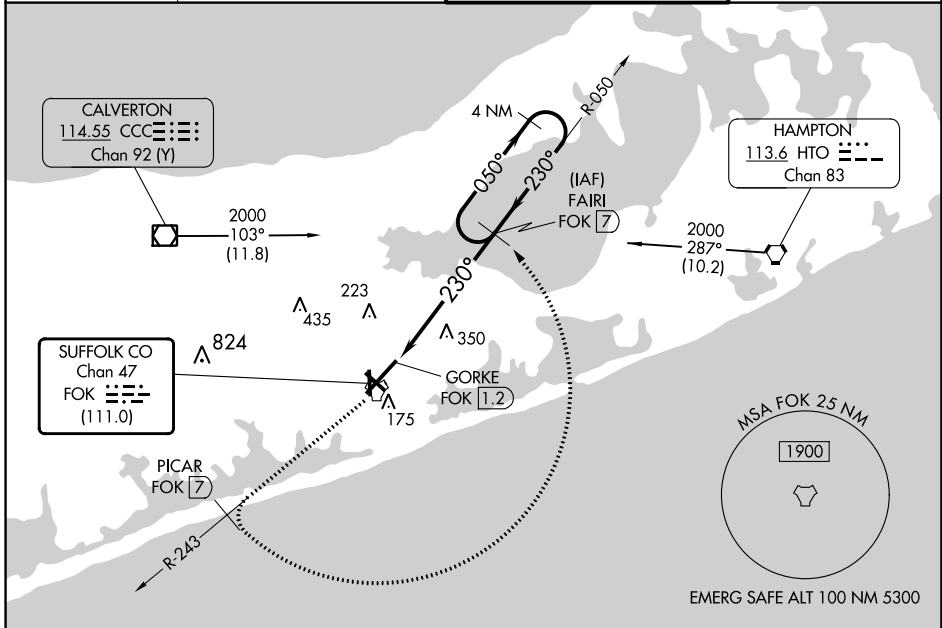
# TACAN RWY 24

FRANCIS S GABRESKI (FOK)

**VDP NA** with Shirley altimeter setting. When local altimeter setting not received, use Shirley altimeter setting and increase all MDAs 40 feet and S-24 Cat C/D visibility 1/2 SM and Circling Cat C visibility 1/4 SM. Circling Rwy 15 NA at night.

**MALSRS**  
MISSED APPROACH: Climb to 2000 on FOK TACAN R-243 to PICAR/7 DME then arc CCW to FAIRI/7 DME and hold.

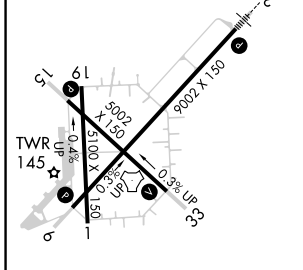
ASOS <b>119.925</b>	NEW YORK APP CON <b>125.975 343.65</b>	SUFFOLK COUNTY TOWER ★ <b>125.3 (CTAF) 236.6</b>	GND CON <b>121.8 225.4</b>
------------------------	---	---	-------------------------------



NE-2, 11 JUL 2024 to 08 AUG 2024

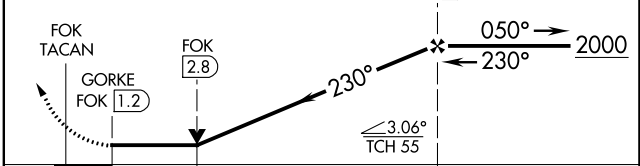
NE-2, 11 JUL 2024 to 08 AUG 2024

ELEV 66	TDZE 66
---------	---------



HIRL Rwy 6-24 (L)  
MIRL Rwy 15-33 (L)  
REIL Rws 6, 15, and 33 (L)

2000  
FOK R-243  
PICAR FOK (7)  
Arc CCW  
FAIRI FOK (7)  
VGSi and descent angles not coincident (VGSi Angle 3.00/TCH 77).  
FAIRI FOK (7)  
4 NM Holding Pattern



CATEGORY	A	B	C	D
S-24	660-1/2 594 (600-1/2)		660-1 1/4 594 (600-1 1/4)	
CIRCLING	660-1 594 (600-1)		700-1 3/4 634 (700-1 3/4)	740-2 1/4 674 (700-2 1/4)