

WAAS CH 56616 W18A	APP CRS 185°	Rwy Idg 12503 TDZE 79 Apt Elev 80
--	------------------------	--

RNAV (GPS) RWY 18L

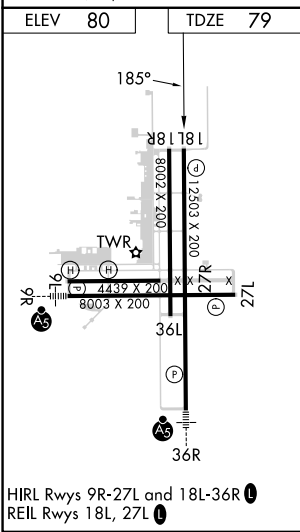
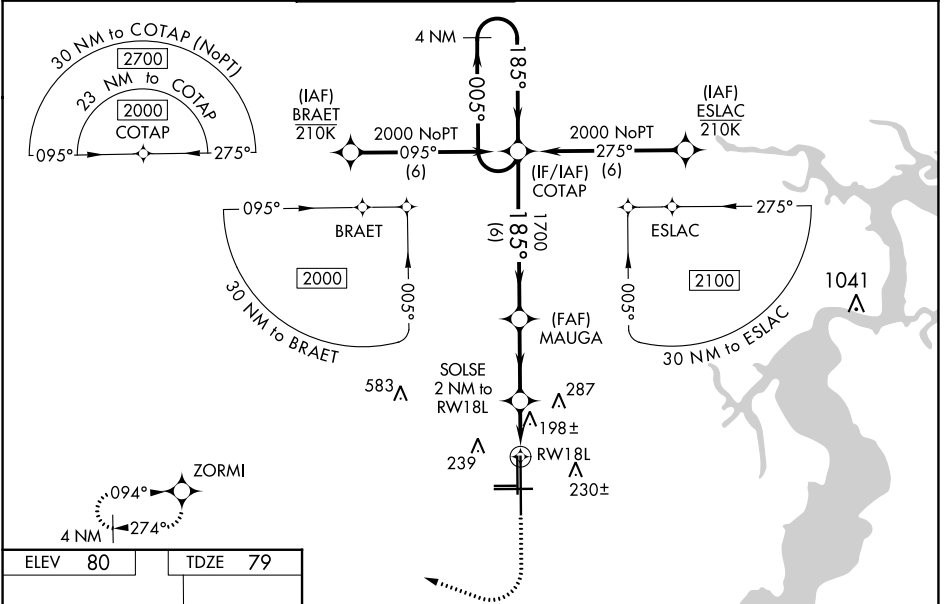
CECIL (VQQ)

▼ Baro-VNAV NA when using Jacksonville Intl altimeter setting. For uncompensated Baro-VNAV systems, LNAV/VNAV NA below -1.5°C (5°F) or above 54°C (130°F). DME/DME RNP-0.3 NA.

▲ When local altimeter setting not received, use Jacksonville Intl altimeter setting and increase all DA 52 feet and all MDA 60 feet. For inop MALS, increase LNAV Cats C/D visibility to 1½ mile. For inop MALS, when using Jacksonville Intl altimeter setting, increase LNAV/VNAV all Cats visibility to 1½ mile and LNAV Cats C/D visibility to 1½ mile. Inop table does not apply to LPV and LNAV/VNAV all Cats and LNAV Cat A/B visibilities. When using Jacksonville Intl altimeter setting, inop table does not apply to LPV all Cats and LNAV Cat A/B visibilities. VDP NA when using Jacksonville Intl altimeter setting.

MISSED APPROACH: Climb to 1000 then climbing right turn to 2000 direct ZORMI and hold.

ATIS 125.275	JACKSONVILLE APP CON 127.775 377.075	CECIL TOWER* 126.1 (CTAF) 235.625	GND CON 121.625 226.675	CLNC DEL 123.975 254.25	GCO 135.075
------------------------	--	---	-----------------------------------	-----------------------------------	-----------------------



1000	2000	ZORMI	VGSI and RNAV glidepath not coincident (VGSI Angle 3.00/TCH 66).			
*LNAV only.			COTAP 4 NM Holding Pattern			
RWY 18L			MAUGA	2000		
SOLSE 2 NM to RWY 18L			1700	185°		
RWY 18L			760*	1700		
0.9 NM			1 NM	2.9 NM	6 NM	
CATEGORY	A	B	C	D		
LPV DA		329-1	250 (300-1)			
LNAV/VNAV DA		368-1	289 (300-1)			
LNAV MDA		460-1	381 (400-1)			
C CIRCLING	540-1 460 (500-1)	560-1 480 (500-1)	600-1½ 520 (600-1½)	640-2 560 (600-2)		

SE-3, 11 JUL 2024 to 08 AUG 2024

SE-3, 11 JUL 2024 to 08 AUG 2024