

TACAN NIP Chan 19 (108.2)	APP CRS 269°	Rwy Idg TDZE Apt Elev	8003 72 80
--	------------------------	-----------------------------	---------------------------------------

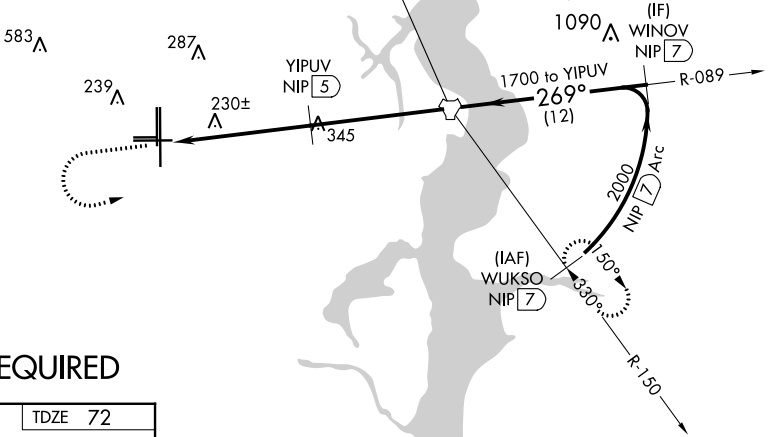
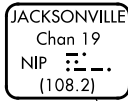
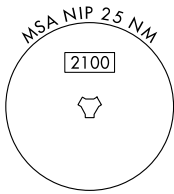
TACAN RWY 27L

CECIL (VQQ)

⚠ VDP NA with Jacksonville Intl altimeter setting. Helicopter visibility reduction below 3/4 SM NA. When local altimeter setting not received, use Jacksonville Intl altimeter setting and increase all MDA 60 feet, increase S-27L Cats C, D, E visibility 1/8 mile.

MISSED APPROACH: Climb to 700 then climbing left turn to 2100 direct NIP TACAN and continue on NIP TACAN R-150 to WUKSO/7 DME and hold.

ATIS 125.275	JACKSONVILLE APP CON 127.775 377.075	CECIL TOWER* 126.1 (CTAF) 235.625	GND CON 121.625 226.675	CLNC DEL 123.975 254.25	GCO 135.075
------------------------	--	--	-----------------------------------	-----------------------------------	-----------------------

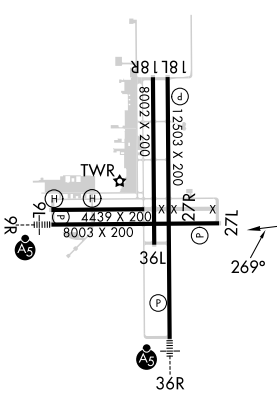


SE-3, 11 JUL 2024 to 08 AUG 2024

SE-3, 11 JUL 2024 to 08 AUG 2024

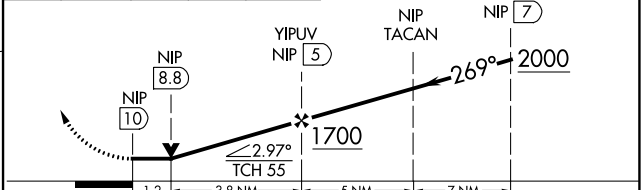
RADAR REQUIRED

ELEV 80	TDZE 72
---------	---------



HIRL Rwy 9R-27L and 18L-36R
REIL Rwy 18L, 27L

700	2100	NIP	NIP R-150	WUKSO NIP 7	VGSI and descent angles not coincident (VGSI Angle 3.00/TCH 67).
-----	------	-----	-----------	-------------	--



CATEGORY	A	B	C	D	E
S-27L	540-1	468 (500-1)	540-1 3/8	468 (500-1 3/8)	
C CIRCLING	540-1 460 (500-1)	560-1 480 (500-1)	600-1 1/2 520 (600-1 1/2)	640-2 560 (600-2)	900-3 820 (900-3)