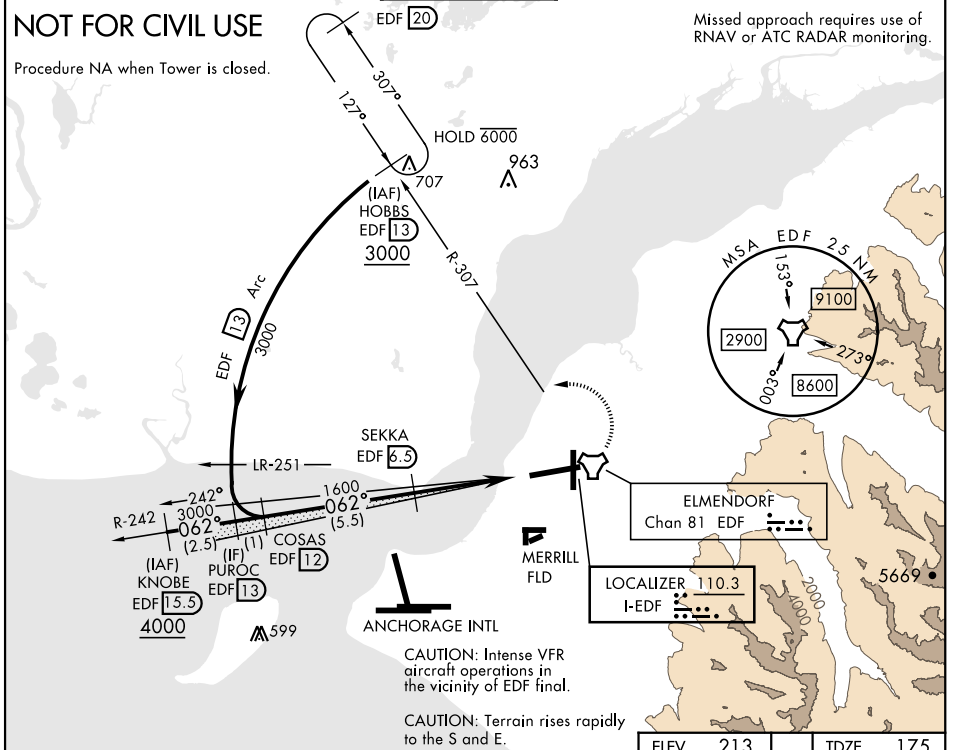


ILS X RWY 6 (SA CAT I)

LOC I-EDF 110.3	APCH CRS 062°	Rwy Ldg TDZE 175 Arpt Elev 213	[USAF]	ELMENDORF AFB (PAED)		
DME required Requires MAJCOM flying authority approval and use of HUD to DA.		ALSIF-1 	MISSED APPROACH: Climb to 900, then climbing left turn to 3000 via EDF R-307 to HOBBS and hold.			
ATIS ★ 124.3 273.5	ANCHORAGE APP CON 118.6 290.5 North 123.8 259.3 South	TOWER 127.2 352.05	GND CON 121.8 275.8	CLNC DEL 128.8 306.925	PAR	



EMERG SAFE ALT 100 NM 15,300

VGSI and ILS glidepath not coincident (VGSI Angle 3.00/TCH 77).		900	3000	HOBBS EDF 13
		↑	↘ EDF R-307	
CATEGORY	A	B	C	D
S-ILS 6	RA 138/14		150	DA 325

HIRL Rwy 6-24
TDZL/CL Rwy 6

ILS X RWY 6 (SA CAT I)

AK, 11 JUL 2024 to 05 SEP 2024

AK, 11 JUL 2024 to 05 SEP 2024