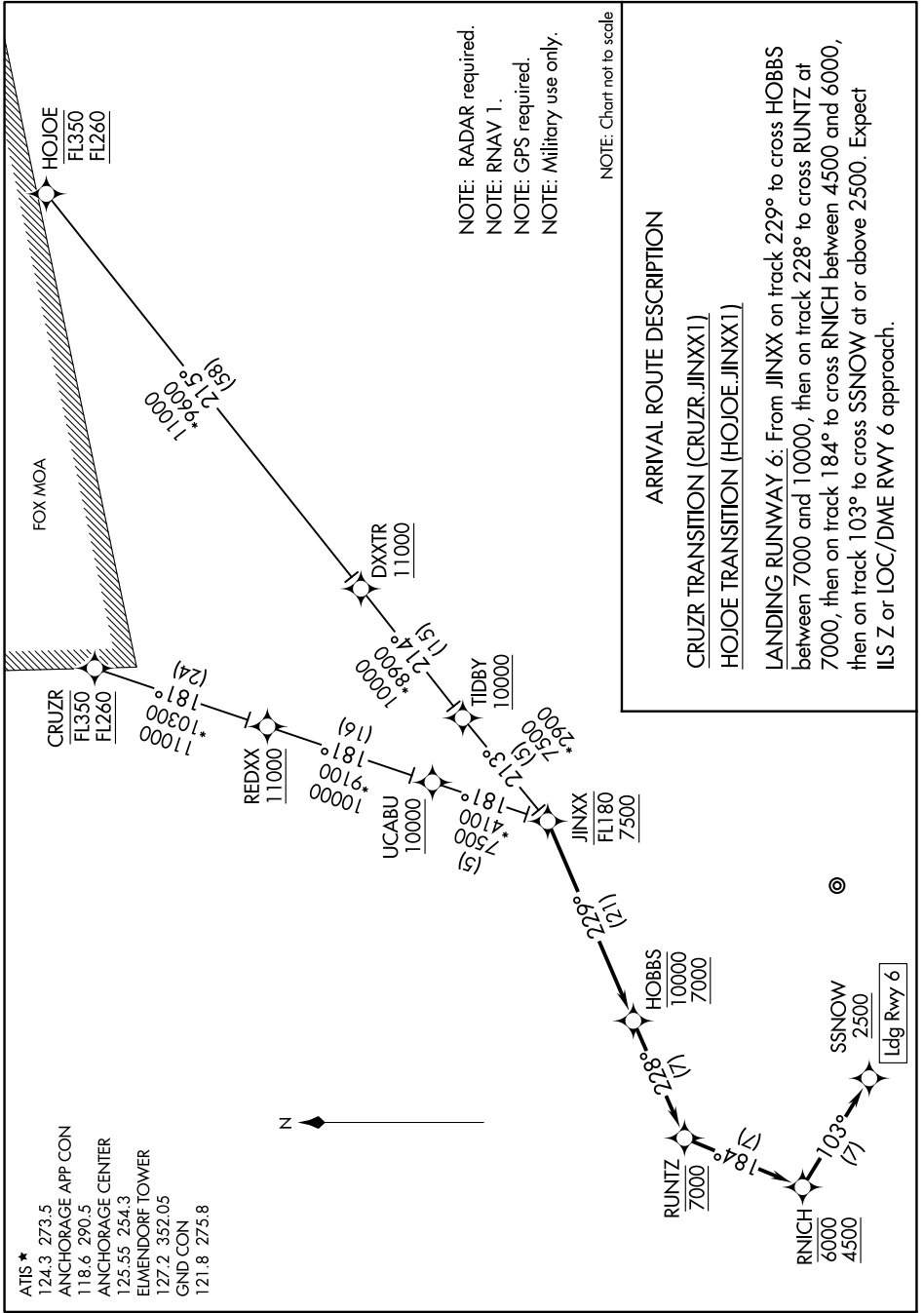


AK, 11 JUL 2024 to 05 SEP 2024



NOTE: RADAR required.  
 NOTE: RNAV 1.  
 NOTE: GPS required.  
 NOTE: Military use only.

NOTE: Chart not to scale

ARRIVAL ROUTE DESCRIPTION

CRUZR TRANSITION (CRUZR.JINXX1)

HOJOE TRANSITION (HOJOE.JINXX1)

LANDING RUNWAY 6: From JINXX on track 229° to cross HOBBS between 7000 and 10000, then on track 228° to cross RUINTZ at 7000, then on track 184° to cross RNICH between 4500 and 6000, then on track 103° to cross SSNOW at or above 2500. Expect ILS Z or LOC/DME RWY 6 approach.

AK, 11 JUL 2024 to 05 SEP 2024