

TACAN RWY 6

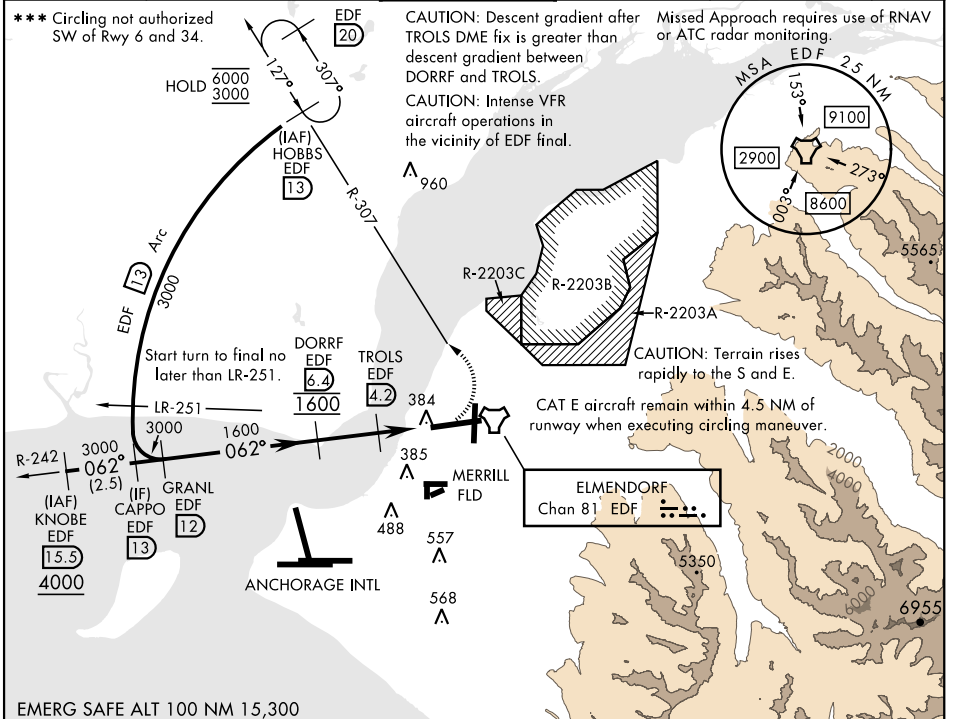
TACAN Chan	EDF 81	APCH CRS 062°	Rwy ldg TDZE 174 Arprt Elev 213
------------	--------	---------------	------------------------------------

[USAF]

ELMENDORF AFB (PAED)

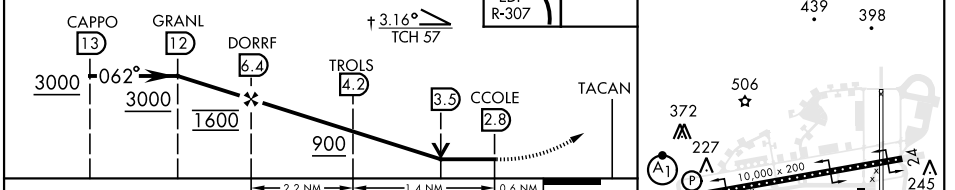
▼ * When ALS inop, increase CAT AB RVR to 55, vis to 1 mile, CAT CDE vis to 1 3/8 miles.
 ** Circling not authorized S of Rwy 6-24.

ATIS ★	ANCHORAGE APP CON (N) (S)	TOWER	GND CON	CLNC DEL	PAR
124.3 273.5	118.6 290.5 123.8 259.3	127.2 352.05	121.8 275.8	128.8 306.925	

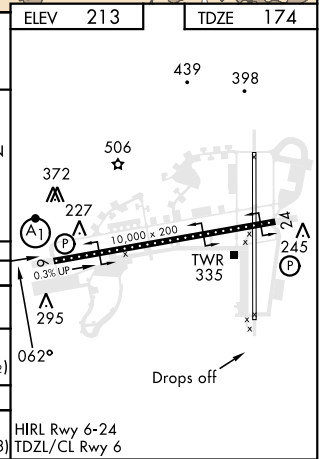


EMERG SAFE ALT 100 NM 15,300

VGSI and descent angles not coincident (VGSI Angle 3.00/TCH 77).



CATEGORY	A	B	C	D	E
S-6 *	640/24	465 (500-1/2)	640/50	465	(500-1)
** CIRCLING	840-1	627 (700-1)	840-1 3/4 627 (700-1 3/4)	840-2 627 (700-2)	940-2 1/2 727 (800-2 1/2)
RWY 34 CIRCLING MINIMUMS					
*** CIRCLING	840-1	627 (700-1)	920-2 707 (800-2)	1020-2 1/2 807 (900-2 1/2)	1480-3 1267 (1300-3)



ANCHORAGE, ALASKA 61° 15' N - 149° 48' W ELMENDORF AFB (PAED)

Amtd 4 03NOV22

TACAN RWY 6

AK, 11 JUL 2024 to 05 SEP 2024

AK, 11 JUL 2024 to 05 SEP 2024