

RNAV (GPS) RWY 10

APCH CRS	Rwy Idg	6115
101°	TDZE	1253
	Arprt Elev	1285

AL-1218 [USA]

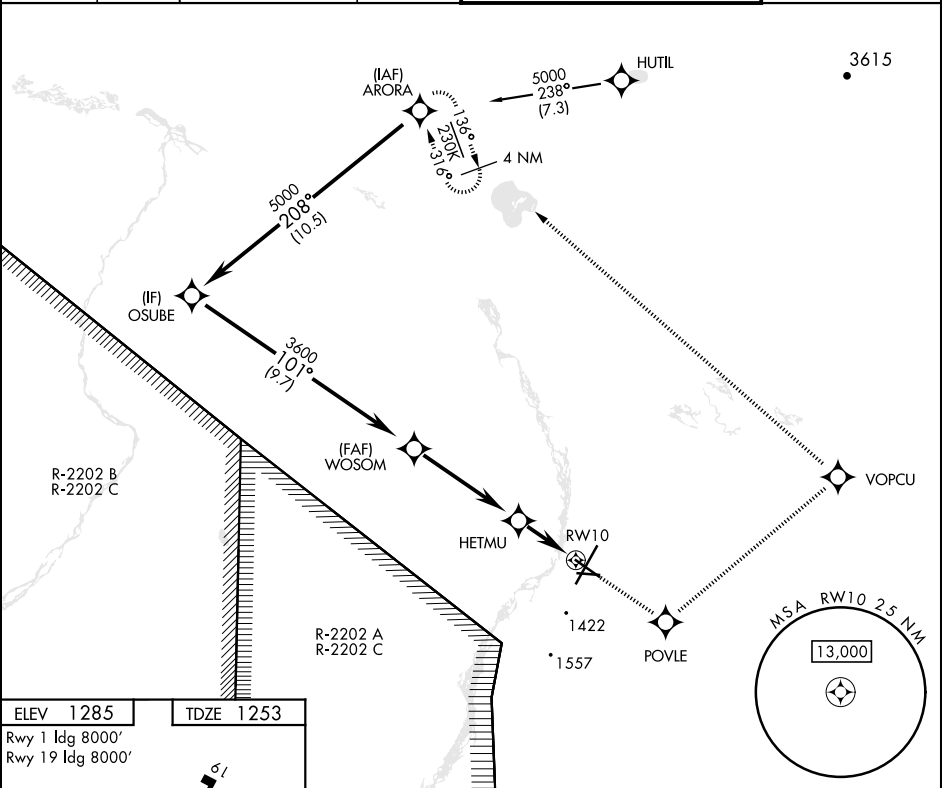
ALLEN AAF (PABI)

RNP APCH-GPS

▼ * Circling not authorized East of Rwy 1-19.

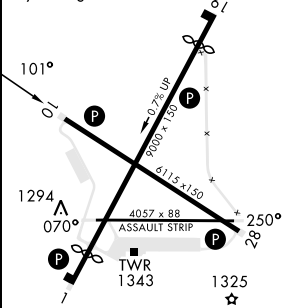
MISSED APPROACH: Climb to 5000 direct POVLE, and via 027° track to VOPCU, left turn via 289° track to ARORA and hold.

ATIS	ASOS	ANCHORAGE CENTER	CTAF	TOWER *	GND CON
132.075	135.65	135.3 322.5	122.9 0	119.8 235.775 40.8 (E) FM	118.225 251.05

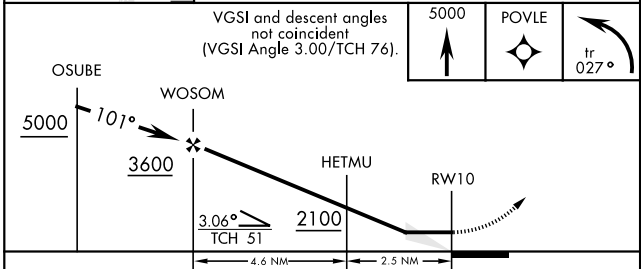


ELEV	1285	TDZE	1253
------	-------------	------	-------------

Rwy 1 Idg 8000'
Rwy 19 Idg 8000'



HIRL Rwy 1-19 and 10-28 **0**
 MIRL Rwy 070°-250° **0**
 REIL Rwy 10-28



CATEGORY	A	B	C	D
LNAV MDA	1640-1	387 (400-1)	1640-1½	387 (400-1½)
	1740-1	1780-1	1860-1½	2040-2½
C CIRCLING*	455 (500-1)	495 (500-1)	575 (600-1½)	755 (800-2½)

RNAV (GPS) RWY 10

AK, 11 JUL 2024 to 05 SEP 2024

AK, 11 JUL 2024 to 05 SEP 2024