

DELTA JUNCTION/FORT GREELY, ALASKA

RNAV (GPS) RWY 19

APCH CRS 187°	Rwy ldg 8000
	TDZE 1239
	Arprt Elev 1285

AL-1218 [USA]

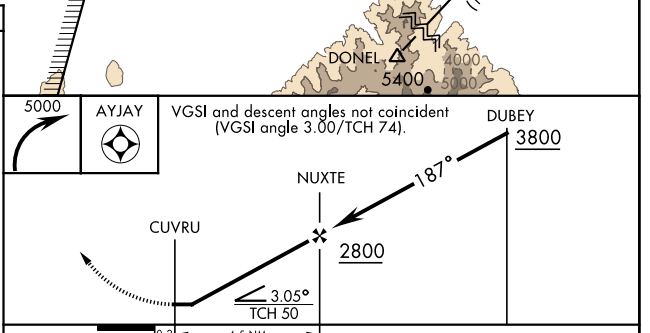
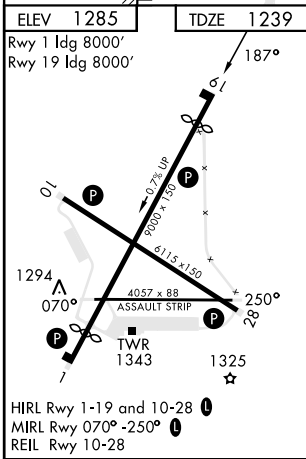
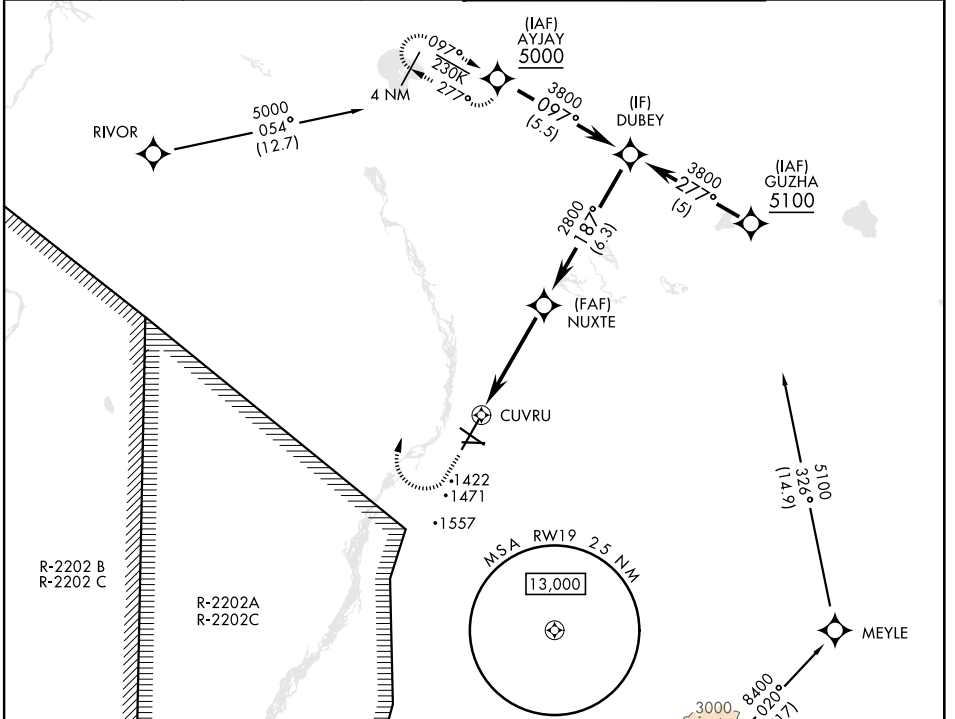
ALLEN AAF (PABI)

RNP APCH - GPS

▼ * Circling not authorized East of Rwy 1-19.

MISSED APPROACH: Climbing right turn to 5000, direct AYJAY and hold.

ATIS 132.075	ASOS 135.65	ANCHORAGE CENTER 135.3 322.5	CTAF 122.90	ALLEN TOWER * 119.8 235.775 40.8 (E) FM	GND CON 118.225 251.05
------------------------	-----------------------	--	-----------------------	---	----------------------------------



CATEGORY	A	B	C	D
LNAV MDA	1740-1 501 (500-1)	1740-1½ 501 (500-1½)		
C CIRCLING*	1740-1 455 (500-1)	1780-1 495 (500-1)	1860-1½ 575 (600-1½)	2040-2½ 755 (800-2½)

DELTA JUNCTION/FORT GREELY, ALASKA

64°00'N-145°43'W

ALLEN AAF (PABI)

Amdt 1 10AUG23

RNAV (GPS) RWY 19

AK, 11 JUL 2024 to 05 SEP 2024

AK, 11 JUL 2024 to 05 SEP 2024