

DELTA JUNCTION/FORT GREELY, ALASKA

VOR/DME or TACAN RWY 19

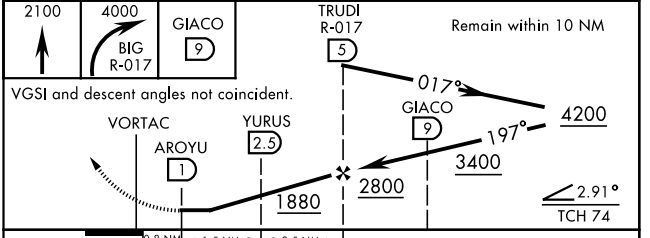
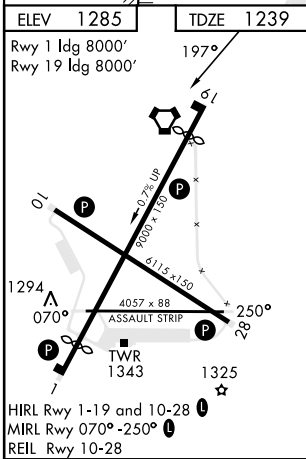
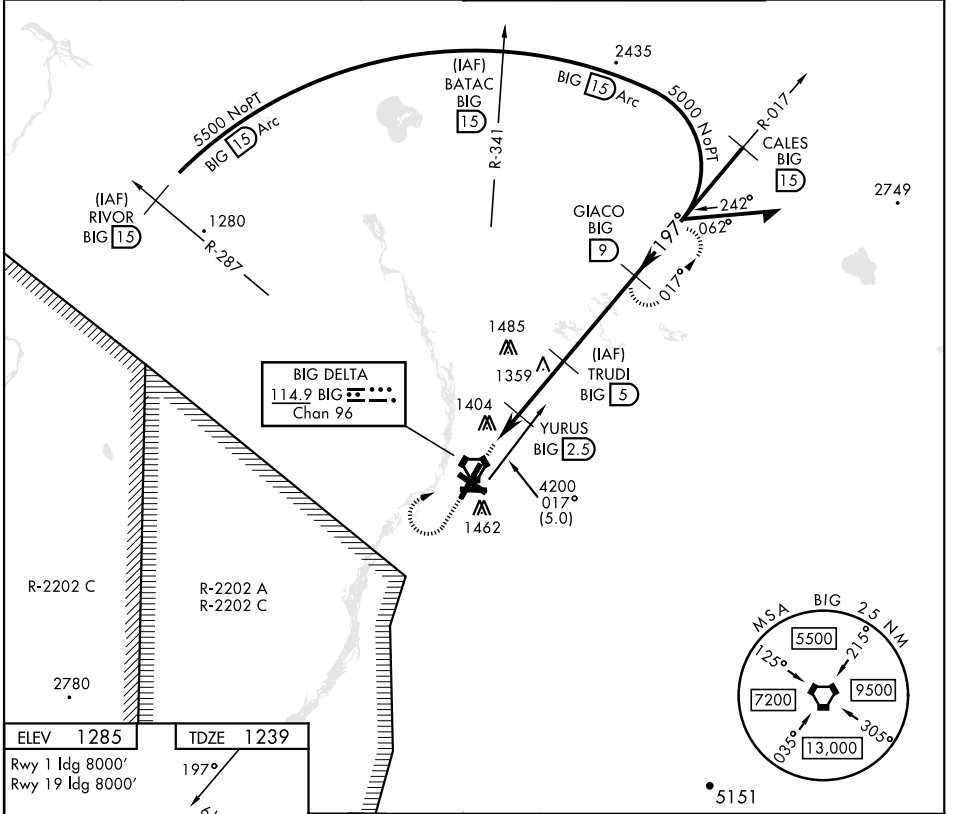
VORTAC BIG 114.9 Chan 96	APCH CRS 197°	Rwy ldg TDZE 1239 Arprt Elev 1285
--	-------------------------	---

AL-1218 [USA]

ALLEN AAF (PABI)

<p>▼ *Circling not authorized East of Rwy 1-19.</p>		<p>MISSED APPROACH: Climb to 2100, then climbing right turn to 4000 via BIG R-017 to GIACO/9 DME and hold.</p>	
---	--	--	--

ATIS 132.075	ASOS 135.65	ANCHORAGE CENTER 135.3 322.5	CTAF 122.9 0	TOWER ★ 119.8 235.775 40.8 (E) FM	GND CON 118.225 251.05
------------------------	-----------------------	--	------------------------	---	----------------------------------



CATEGORY	A	B	C	D
S-19	1660-1 421 (400-1)	1660-1 421 (400-1)	1660-1 1/4 421 (400-1 1/4)	1860-2
CIRCLING *	1720-1 435 (500-1)	1760-1 475 (500-1)	1760-1 1/2 475 (500-1 1/2)	1860-2 575 (600-2)

DELTA JUNCTION/FORT GREELY, ALASKA
Amdt 2B 05DEC19

64°00'N-145°43'W

ALLEN AAF (PABI)

VOR/DME or TACAN RWY 19

AK, 11 JUL 2024 to 05 SEP 2024

AK, 11 JUL 2024 to 05 SEP 2024