

NDB CUN 257	APCH CRS 252°	Rwy Idg TDZE Arprt Elev N/A N/A 449
-----------------------	-------------------------	--

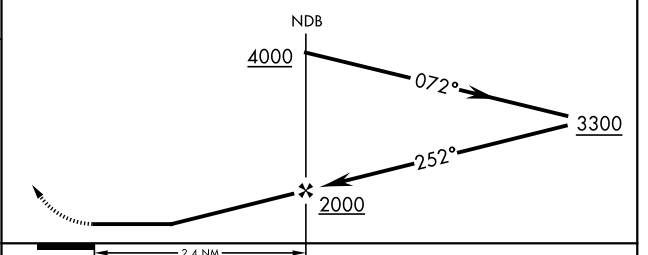
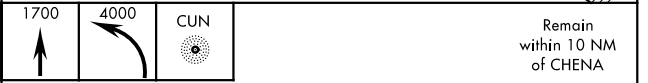
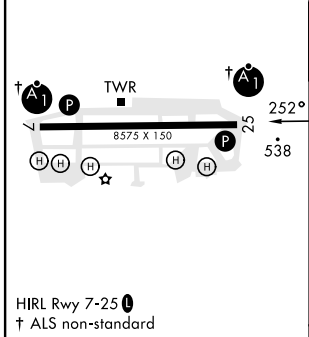
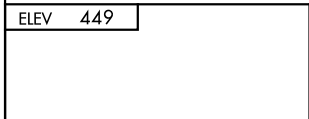
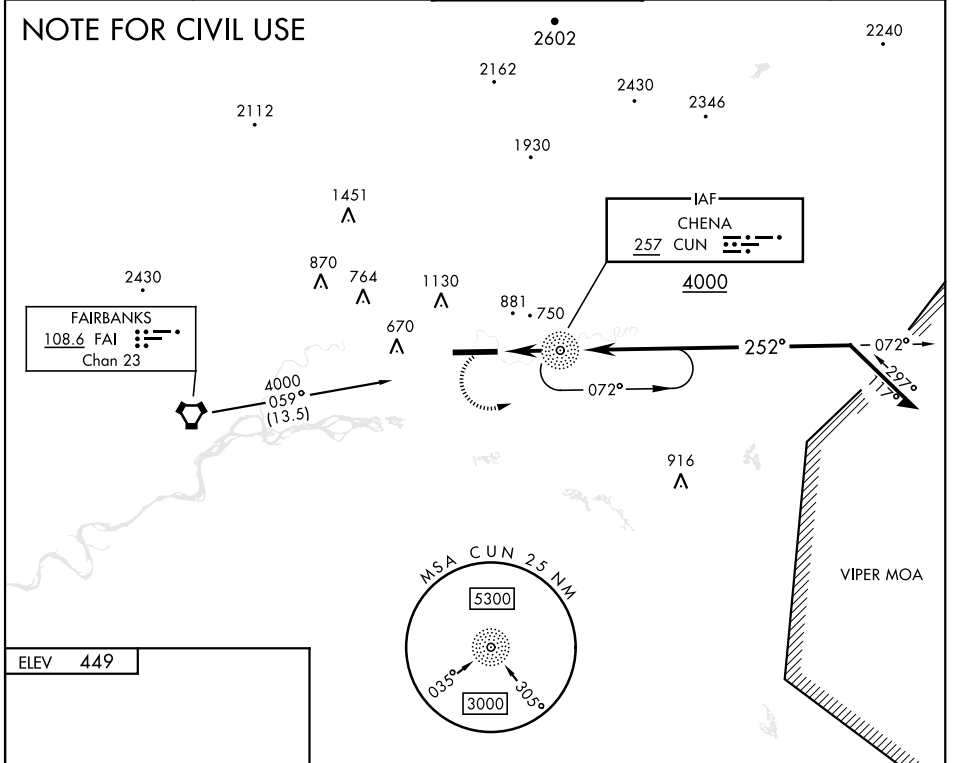
AL-1219 [USA]

LADD AAF (PAFB)

▼ * Circling not authorized N of Rwy 7-25. MISSED APPROACH: Climb to 1700 then climbing left turn to 4000 direct CUN NDB and hold, continue climb-in-hold to 4000.

ATIS 134.25	FAIRBANKS APP CON 127.1 251.1 360° - 179° 125.35 363.2 180° - 359°	TOWER* 125.0 (CTAF) 0 284.6	GND CON 121.7 263.15	ASR/PAR
-----------------------	--	--	--------------------------------	---------

NOTE FOR CIVIL USE



FAF to MAP 2.4 NM					CATEGORY	A	B	C	D
Knots	60	90	120	150	180	1640-1¼	1640-1½	1640-3	1640-3
Min:Sec	2:24	1:36	1:12	0:58	0:48	1191 (1200-1¼)	1191 (1200-1½)	1191 (1200-3)	1191 (1200-3)

AK, 11 JUL 2024 to 05 SEP 2024

AK, 11 JUL 2024 to 05 SEP 2024