

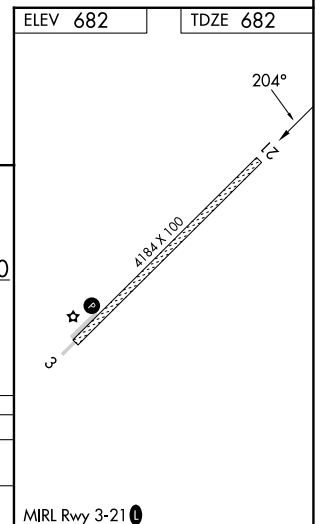
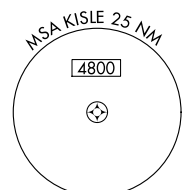
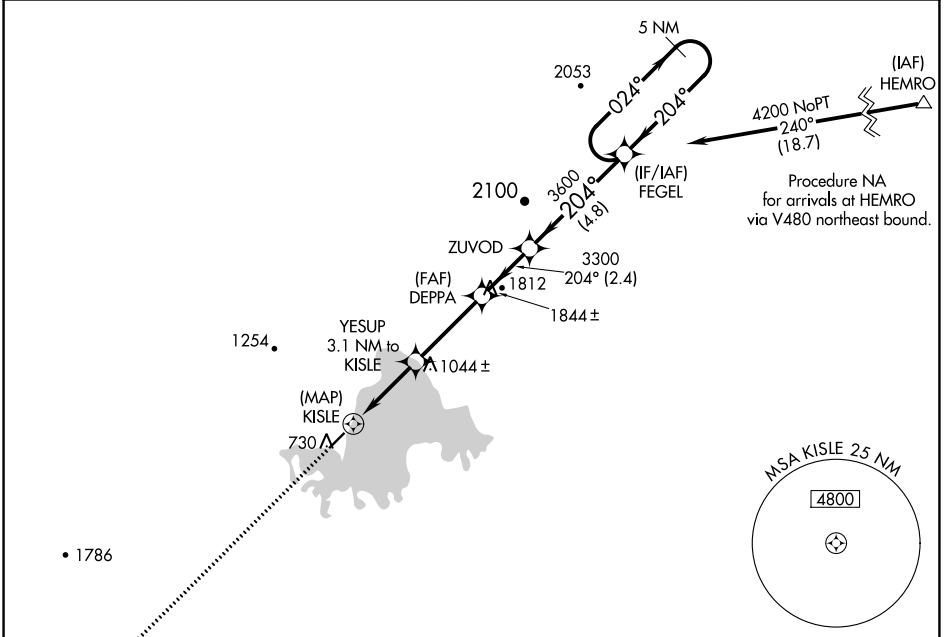
APP CRS 204°	Rwy Idg 4184 TDZE 682 Apt Elev 682
------------------------	---

RNAV (GPS) RWY 21

MINCHUMINA (MHM) (P.M.H)

-37°C DME/DME RNP-0.3 NA. Circling NA west of Rwy 3-21.	MISSED APPROACH: Climb to 3400 direct BECAG and hold.
---	---

AWOS-3P 135.55	ANCHORAGE CENTER 120.9 319.2	FAIRBANKS RADIO 122.2	CTAF 122.9
--------------------------	--	---------------------------------	----------------------



3400	BECAG	FEGEL	5 NM Holding Pattern
↑			
YESUP 3.1 NM to KISLE	DEPPA	ZUVOD	
1.5 NM to KISLE	3300	3600	204° →
≤ 3.50° TCH 35°			← 204°
2060			4200
0.5	1.5	1.6	3.3 NM
			2.4 NM
			4.8 NM
CATEGORY	A	B	C
LNVA MDA	1460-1 778 (800-1)	1460-1½ 778 (800-1½)	1460-2½ 778 (800-2½)
CIRCLING	1460-1 778 (800-1)	1460-1½ 778 (800-1½)	1460-2½ 778 (800-2½)

AK, 11 JUL 2024 to 05 SEP 2024

AK, 11 JUL 2024 to 05 SEP 2024